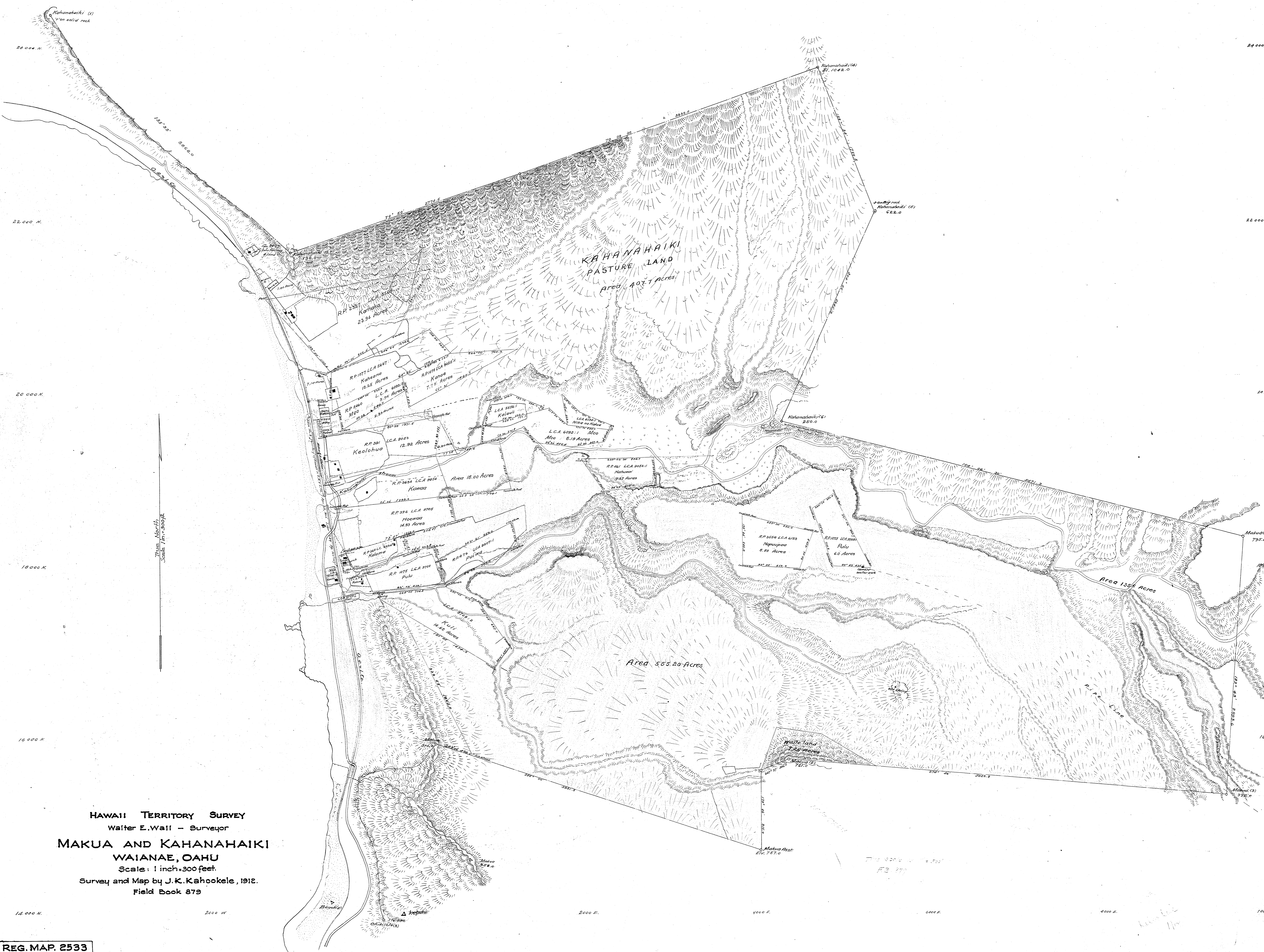


26 000 M. 2000 W. 2000 E. 4000 E. 6000 E. 8000 E. 10000 E.



**KAHANAHAIKI PASTURE LAND**  
Area 107.7 Acres

True North  
Scale 1 in. = 300 ft.

**HAWAII TERRITORY SURVEY**  
Walter E. Wall - Surveyor  
**MAKUA AND KAHANAHAIKI**  
**WAIANAE, OAHU**  
Scale: 1 inch = 300 feet.  
Survey and Map by J. K. Kahookole, 1912.  
Field Book 879

REG. MAP. 2533

12 000 M. 2000 W. 2000 E. 4000 E. 6000 E. 8000 E. 10000 E.