

see map 533

Govt. Heanaki
Ahu J. Fuller

Grant '872 to 'Koyakakaka'

Grant '772 to 'Julia Kamakai'

Ahu J.F.

Grant '986 to 'Munana'

Grant '988 to 'Ka'aea'

Govt. Road

Grant '988 to 'Naihe'

Grant '752 to 'Adams'

334 Acres

James Hole

to

'1746'

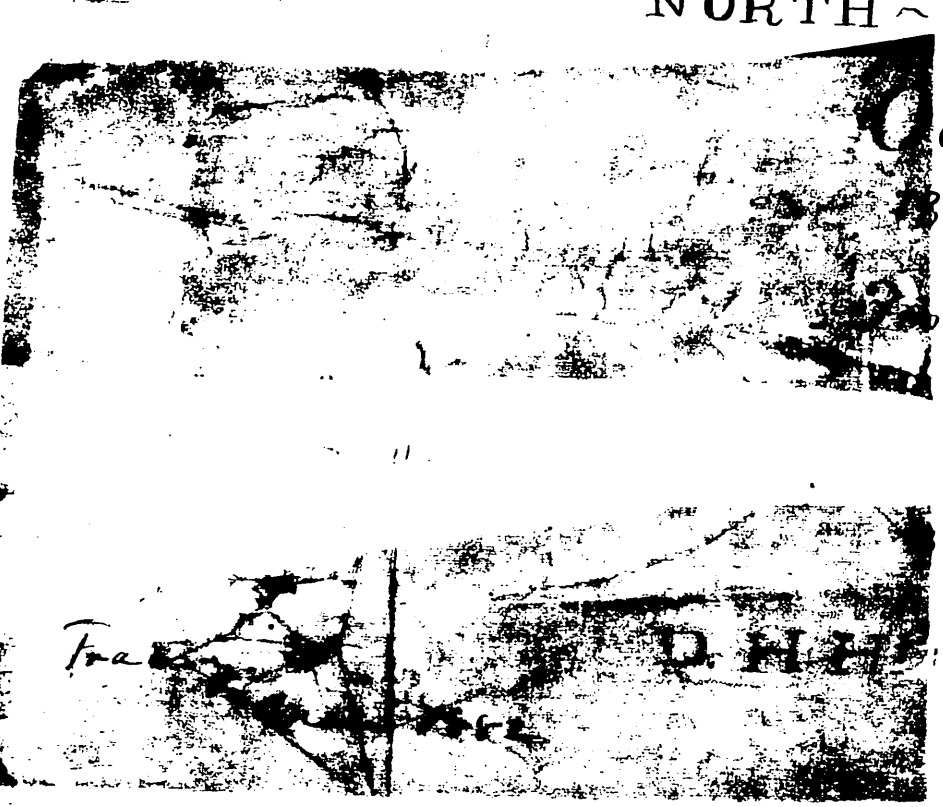
Grant

Adams' Hill

MAP and SURVEY
of
Auhaukeaelth
NORTH - KONA - HAWAII

October
1880

& Royal Patents



D. H. CHCOCK.

Scale 8ch. to the inch.

Cs. 9-54.

Register No. 936

P.M. 1880

927 7-40

