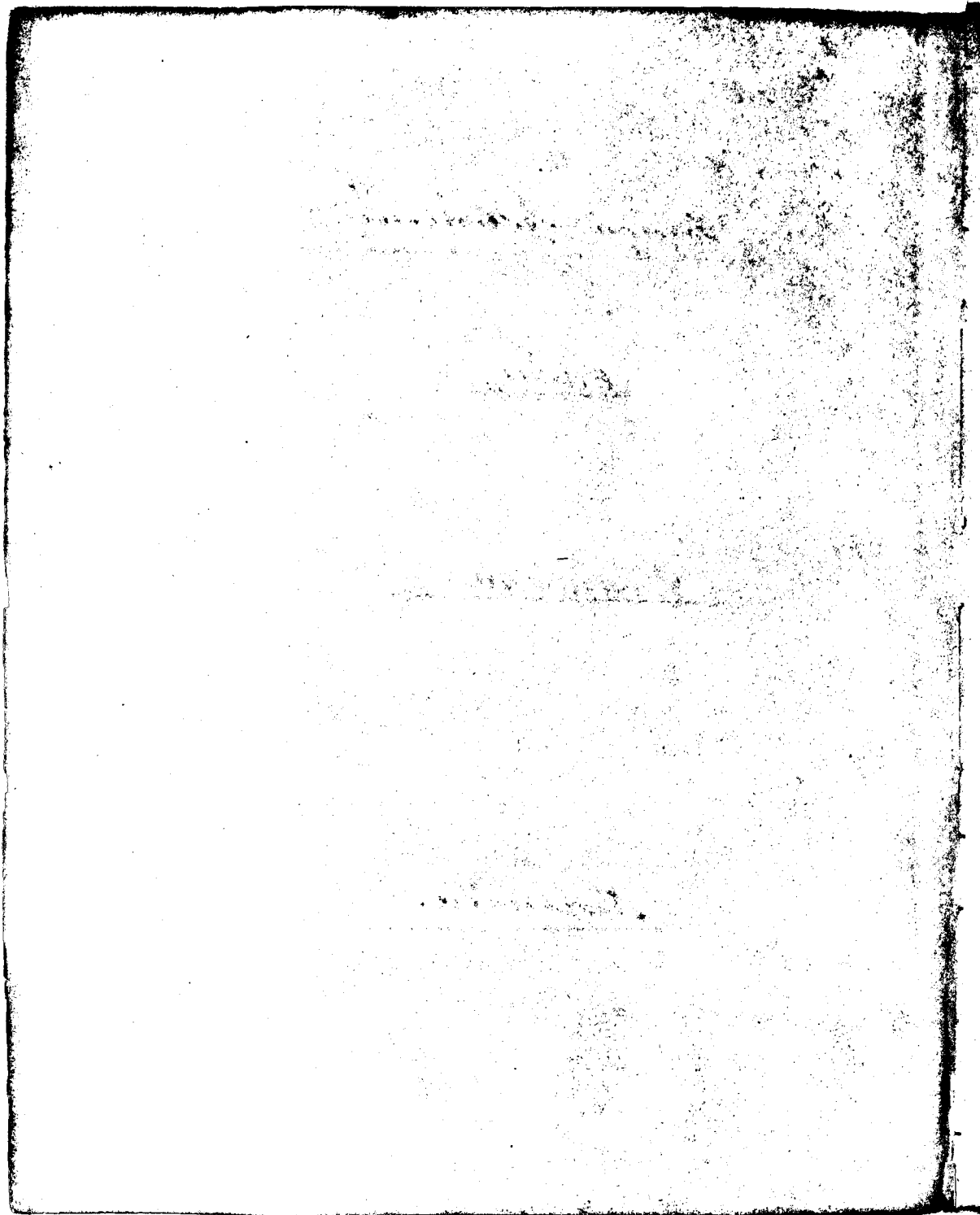


Foreign Testimony

Oahu.

Volume 10.

Koolau loa.



Hauula 2^d Sept. 1850.

Claim No. 8337. Kaneumi.

(1) Kahanaumakai, sworn, says he knows the kals patches of btt in Hauula. There are six patches. Two of them are in one place and two in another forming two pieces. The first piece is bounded on the N. by the Kouohiki, - E. by the land of Kalehu, - S. by Kahanaumakai's land, W. by Kaailaau's land.

(2) The second piece is bounded on the N. by Kalehu's land, - E. by Mahoe's land, - S. by Ka-uhii's land, - W. by Kahanaumakai's land.

(3) Knows the House Lot of btt. It is enclosed by a Stone Wall. Bounded on the N. by the stream called Kane, - E. by the land of Kahanaumakai, - S. by Mahoe's House Lot, - W. by the Hog Pen.

He has occupied the place claimed, for 15 years.

Kaailaau, sworn, says he has heard the testimony given by the last witness and it is all correct.

(4) Kanealii, sworn, says the third piece of kals land belonging to btt, consists of 2 patches. It is bounded N. by Kamosilikii's land, - E. by Hoaa's land, - S. by Kanepepe-iaopili's land, - W. by Kalehu's land.

C. G. Hopkins, Land Agent for the King, had no objection to this claim.

2
Claim 8184.

Haehae. (Maaina is heir)

Kanealii, sworn, says he knows the kalo land claimed by Haehae in Haauula.

There are four patches forming one piece, bounded on the N. by Kaia's land, - on the E. and S. by Kamaka's land, - on the W. by Kaia's land.

Witness knows the second kalo land claimed by Haehae. There are two patches planted at present. They were planted by Kualiie the Hope Konoohiki in 1848 and she has recently gathered the second crop of kalo. The Ct has not planted it during two crops.

(Note. This belongs to Kamooihiki's widow, whose name is Kualiie).

Kawahine, sworn, says he knows the four kalo patches of Ct. in Haauula, they are the same as described by Kanealii. Maaina is the heir of Haehae, who held the land for a very long time.

The King's Land Agent made no objections to this claim.

Claim 8414.

Kahanaumakai.

Kaneumi, swears, says he knows the Kale land of 6th in Haunala. There are 4 Kale patches, all planted. They all join together, forming one piece, - Bounded on the N. by Witness' land, - E. by the same, - S. by Rankie's land, - W. by the land of Kahauloa.

Claimant has a piece of land in the Kula planted with Coffee, - Bounded on the N. by a stream, - E. & S. by the Honohiki, - W. by Kaneumi's land.

Witness knows the claimant's House Lot. It is bounded on the N. by a pond, - E. by the Hog Pen, - S. by a stream, - W. by Kale land. There are two houses. It is not fenced in. (To be measured including the pond on the North).

Kanealii, swears, says he knows the 4 Kale patches claimed by Kahanaumakai in Haunala. He knows the Kula land claimed by him also. There are but few Coffee trees now growing on it. It is not well cultivated. The Coffee trees were destroyed by the cattle. Thinks it is now deserted by claimant. It is but a small piece of land.

The House Lot is the same as was stated by last witness. It has occupied the place since the time the missionaries arrived here.

The King's Land Agent had no objections to this claim.

W
Claim 8338. Kealoha. (Deceased).

Kahanaumakai, sworn, says he knows the Kale land claimed by Kealoha, in Hanalei. There are two pieces, the first containing 3 patches and the second 2.

The first piece is bounded on the N. by the land of Kaliai, - E. by the sea beach, - S. & W. by the Kouhiki.

The second piece of two patches has been lying waste for some time past, but the people holding it have lately commenced clearing it for planting.

It is bounded on the N. by the Kouhiki, - E. by the stream, - S. by an Aiea, - W. by the land of Poopuu. Kealoha and his heirs have held this land from the time of Kaomi (17 Years).

Kamealii, sworn, says he knows the second piece claimed by Kealoha. The 2 patches have been left uncultivated since before the death of Kealoha in 1848.

Kalua was the wife of Kealoha, and is now married to Kawahine.

The King's Land Agent objected to the second piece of two patches, on the ground that it had been abandoned.

Claim ~~10276~~.10726 Poopuu (a widow)

Koekoe, sworn, says he knows the Kalo land claimed by Poopuu in Hanuula.

There are 3 Kalo patches cultivated by Ott.

The three patches join together, forming one piece. It is bounded on the N. by the

land of Punibaka, - on the E. by two patches claimed by Kealoha deceased, - on the S. by the land of Mahoe, - W. by Kamealii's land.

Claimant has occupied this place for upwards of ten years.

The King's Land Agent had no objection to make to this claim.

6
Claim 8418.

Kamaka.

Waiania, sworn, says he knows the Kalo land claimed by Kamaka in Haunala. There are four patches, forming one piece. They are all in cultivation but one, which has been left uncultivated on account of the Hogs but not abandoned. This Kalo land is bounded on the N. by witness' land, - E. by the patches claimed by Haehae but cultivated by Kualii, - S. by Haehae's (Waiania's land) W. by Kaia's land.

Witness knows the Kalo land claimed by Kamaka, it is not cultivated. It was abandoned on account of the animals like the lands formerly cultivated by others, namely in the year 1845. Claimant has held the Kalo land for a long time, before I can recollect. The animals spoken of as destroying the cultivation were the property of all the people.

Kaailaau, - sworn, says he knows the Kalo land of claimant. He confirms exactly the testimony given by Waiania.

The King's Land Agent had no objection to make to this claim.

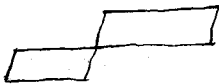
Claim 8271 }
8444 } Kaia.

Koekoe, sworn, says he knows the Kalo land claimed by Kaia in Hanula. There are 4 patches but they are lying waste. Their cultivation has been abandoned on account of the destruction of the Kalo by the animals of the people running at large over the land. Witness does not know the Kula land claimed by Kaia.

But says he has abandoned the cultivation of the Kula land on account of the animals.

Kanealii, sworn, says Kaia gave up cultivating the Kula land in 1845, at the same time with a great many others.

Witness knows the Kalo patches claimed by Kaia. Two of them have been abandoned for a long time, and 2 of them are cultivated. The 2 patches form one piece, bounded on the N. by Wahanui's land, - on the E. by Kamaka's land, - S. by Kae-hai's land, - W. by Kekua's land.



The King's Land Agent had no objection to the 2 Kalo patches in cultivation, and Kaia consented to accept them.

3
Claim 8167.

Hikiau.

Mairahi, sworn, says he knows the kula land claimed by Hikiau in Kaipapan (a Govt. Land). There is but one piece which is cultivated in potatoes, melons &c. It is bounded on the N. by the land of Kanhooi, - E. by the sea side, - S. by the land of Hoopalake, - W. by the Koroohiki. Claimant has occupied the land since before there was any law. Keaweiki is the name of the moou ana.

Witness knows the Home Lot of 600. It is not enclosed. It is bounded on the Waialua side by a stream, - Makai by a hill, - Hanula side the same, - Mauka by the land of Hoopalake.

Kawahine, the Koroohiki, had no objection to make to this claim.

Claim 8171.

Hoopalake.

9

Maiahi, sworn, says he knows the Kalo land claimed by Hoopalake in Kaipapau. There are 4 patches, forming one piece. Bounded on the Waialua side by the Kula land of Hikiian, - Makai the same, - Hanuula side by the boundary of Hanuula, - Mauka the same. Claimant has a piece of Kula land planted. It is enclosed with a fence, and Bounded on Waialua side by Hikiian's land, - Makai by the Koushiki, - Hanuula side by Hanuula boundary, - Mauka by the hills.

Koekoe, sworn, says he knows the Kalo land claimed by Hoopalake in Hanuula. There are 2 patches forming one piece. Bounded on the N. by a stream, - E. by the Koushiki, - S. by Kamanui's land, - W. by Hinamoo's land.

Witness knows the House Lot claimed by Hoopalake in Kaipapau, the stones are prepared for building a wall round it. It is bounded on the N. by a stream, - E. by the sea side, - S. by Hanuula boundary, - W. by Claimant's Kalo land.

Kawahine, the Koushiki, of Kaipapau, made no objection to the claim in that land. It has occupied since long before witnesses came there.

The King's Land Agent made no objection to the claim in Hanuula.

Claim 8342.

Kaailaau.

Koekoe, sworn, says he knows the 2 kals patches claimed by Kaailaau in Hanalei. They form but one piece, Bounded N. by the Honohiki's land, - E. by the land of Kaneumi, - S. by Kawaiama's land, - W. by Keoho's land.

Witnep knows the piece of kela land cultivated by claimant. It was formerly cultivated in potatoes. It was given up from cultivation previous to last year, witnep does not recollect the precise time.

Claimant has not occupied the place claimed as a House Lot for a long time, - he lives on some one else's land.

The King's Land Agent made no objection to this claim.

Hauula 3rd Septe, 1850.

11

Claim 10,341.

Mahoe.

Kaneumi, sworn, says he knows all the land of Mahoe, - There are 4 Kalo patches. They are in the moa aina of Kamalokama, Hauula. They are all in one piece, - Bounded Mauka by Kaneumi's land, - Waialua side by Kanepepili's land, - Makai by Koeko'e's Land, - Koolau side by Kahui's land.

Witness says Mahoe has no House Lot, - does not know how much land ~~etc~~ has cultivated in the Kula.

Kaailaan, sworn, says he knows the Kula land cultivated by Mahoe, - it is in the Ili of Lihue Iki, Hauula. It is used now as a pasture for his horses & not cultivated, but I believe he intends to cultivate it.

Witness knows Mahoe's House Lot. It is bounded on the N. by Kaneumi's House Lot, - E. by a pond, - S. by a Brook, - W. by the Hog Wall.

The King's Land Agent made no objection to this claim.

Hauula 2nd Sept. 1852.

Claim 8183.

Hina.

Kahanaumakai, sworn, says he knows the Kalo land claimed by Hina, in Hauula. There are 4 Kalo patches, forming one piece, bounded on the N. by the Keula land, - E. by Hoopalake's land, - S. by Kamani's land, - W. by Kalehu's land.

Witness knows the Keula land claimed by Hina. It was cultivated by Ott in 1848 and 1849. Hina is preparing to enclose it. It is bounded on the N. by a stream, - E. by the land of Hoopalake, - S. by claimant's Kalo land, - W. by Keoke's land. Ott derived the Kalo land through his wife, who derived it from her Grandfather.

Hoopalake, sworn, says he knows the Keula land claimed by Hina, in Hauula. It was cultivated in 1848 and 1849, but is not so now. Hina is preparing now to enclose this place. The land is bounded as set forth by the last witness.

(Postponed till tomorrow).

Sept. 3rd 1850.

Kanealiu, sworn, says he knows the Keula land cultivated by Hina in 1848. In 1849 the cultivation was confined to a few Water melons which were destroyed by the Horses. The part cultivated by Ott did not exceed one acre in extent. The boundaries claimed by Hina exceed by a great deal the portion cultivated. There were several other persons who planted things in this land as well as Ott. Some of these were Kanele, Puhikauka, - Kaaikaa, Kauhakalima, Kamaka, Kesiwi and

Hooke. (On the boundaries claimed being again read, witness confirmed his previous statement) Alapai, the Sub Agent, in February 1850, came and objected to their enclosing the land, as it would be depriving the Konoehiki of his rights.

Kealoha, sworn, says he knows the Kula land in question. Hina has cultivated a small portion of this land. Knows that a good many others have cultivated portions of this land. Thinks the part cultivated by Hina in 1848 did not exceed one acre. In 1849, he is doubtful if Hina had any thing planted there at all.

(As there was much dispute about this Kula land, between the Konoehiki and the Ctt, the Commissioner, G. M. Robertson, proceeded to the spot and examined the land. It contains probably 5 acres and is enclosed by a stone wall on one side, built lately. There are stones lying on that side of the land, for building a fence. There is no cultivation on the land at present.)

C. G. Hopkins, King's Land Agent, objected to the claim for this Kula land. - 1st Because it is now entirely without signs of cultivation, - 2nd Hina was warned by Alapai the Sub Agent, not to enclose the land at the boundaries claimed by him, aping as a reason that he would thereby take in the Konoehiki's land, - 3rd because it is not enclosed even up to the present time, and 4th because a portion of the land is said to have been cultivated by other persons.

Hauula 4th Sept: 1850.

Claim 8164 C.

Kanealii.

This claim is not to be found in the bundle of Hauula claims, and is supposed to have been lost. Kaneumi states that he was one of many who were present when the claim was made out by Kailianu, late school master here.

Kaneumi, sworn, says he knows the kalo land claimed by Kanealii in Hauula. It consists of 4 patches in two pieces. The first piece of 3 patches is bounded on the N. by the lands of Haaai & Kahunahana, - E. by Poo-puni's land, - S. by Mahoe's land, - W. by Kanepeperapili's land.

The second piece of one patch is bounded on the N. by Kaunalei's land, - E. by Kalua's land, - S. by the Konohiki's and Kaubemab, - W. by the Konohiki.

Witness knows the House Lot of Ott. There is one house on it. Kanealii has lived there ever since he was a boy. It is not enclosed.

Koekoe, sworn, says he knows the kalo land of Kanealii, and the boundaries are those set forth by the last witness.

The King's Land Agent made no objection to this claim.

Claim 8164. Hoopii (a woman).

Kaneumi, sworn, says he knows the House Lot claimed by Hoopii in Haucula. It is enclosed on one side by the Hog Wall. There is but one house on it which is occupied by the claimant. He has held the place from six to ten years. The piece of Kula land claimed by Hoopii adjoining the Kaneuhale is uncultivated, lying waste.

Koekoe, sworn, says he has heard the testimony given by the last witness, and believes it to be correct.

The King's Land Agent made no objection to the House Lot, but objected to any claim for Kula land.

Claim 8411.

Kaunela. (Deceased)

Kaailaau, sworn, says he knows the Kalo land claimed by Kaunela in Kaunela. There are three patches, one of which is at present full of Kalo. They are bounded on the N. by the Kula land, mentioned by the claim, - E. by the sand and by the House Lot where Kaunela's widow lives, - S. by the land of Kealoha, - W. by the House Lot of Kahimahana. Ott has held the land for over ten years. The Kula land claimed is not cultivated.

Kameuni, sworn, says he knows the Kalo land claimed by Kaunela. There are 3 patches. He confirms the boundaries as stated by Kaailaau. Kaunela had a House Lot ad = joining the Kalo patches. His house has been taken down and his widow lives in one built nearer the beach. (House Lot to be measured).

The King's Land Agent made no objection to this claim.

Claim 8416.

Koaniani.

Kanealii, sworn, says he knows the land of
Olt in Maunaloa. There are six patches of Kalo,
forming but one piece. This piece is
bounded on the N. by the land of Kainanani,
E. by Koaniani's land, - S. by the Konoiki, -
W. by Kula land.

Koaniani has a House Lot in the same
place with 4 houses on it. It adjoins the
kalo land and is not enclosed. Olt has no
Kula land under cultivation. He has oc-
cupied the land for perhaps 20 years.

Hoopalake, sworn, says he knows the Kalo
land of claimant. The number of patches
and boundaries as given by Kanealii are
correct. Olt has no Kula land cultivated
or enclosed at present.

The King's Land Agent made no
objection to this claim.

Claim 8438. Keawe.

Kanealii, sworn, says he knows the Kalo land claimed by Keawe in Hamula. It consists of 4 patches, in one piece. There is but one patch planted at present, but they were all planted at the time the claim was sent in. The reason why some of the patches are not now planted is because the hoop destroyed a great part of the Kalo. This piece is bounded on the S. by Kaias land, - W. by Kukue's land, - N. by a stream and the Koushiki, - E. by Wawanuia's land. Keawe occupied the land for upwards of 20 years. The Kula land claimed by Keawe is lying waste and un-cultivated and has been so for several years.

Koekoe, sworn, says he knows the Kalo land claimed by Keawe and confirms the testimony of Kanealii in regard to it. Wahanui got the land from the Koushiki at the death of Keawe in 1848.

Kanealii, re-examined, says that after the death of Keawe, Wahanui had cultivated the patches. He planted the Kalo which is growing there now.

The King's Land Agent, objected to the claim going to Wahanui, as Keawe is dead and the land has reverted to the Haka Aina.

Claim 10,261. Makalohi.

Kaneumi, sworn, says he knows the real land claimed by Makalohi in Hanalei. It consists of two patches, which are distinct from each other. The first patch is bounded on the N. by the Kowhiki, - E. by Kekue's land, - S. by the Kowhiki's Loi paahas, - W. by Kai's land.

The second patch is bounded S. by the Kula, - W. by Kai's land, - N. by the Loi paahas before mentioned, - E. by Kekue's land. Claimant has held this land for over ten years.

Mokulama, sworn, says he knows the land claimed by Makalohi and confirms the testimony of Kaneumi.

The King's Land Agent made no objection to this claim.

Claim 8436. Kauihi.

Hoopalake, sworn, says he knows the Kalo land claimed by Kauihi in Kamela.

There are seven patches, joined together, forming one piece. Said piece is bounded by Kahanaumakai and Kaneumi, - E. by the land of Kairoi, - S. by the Keula land, - W. by the same. Kauihi has occupied said land since before 1839.

Kaneumi, sworn, says he knows the Kalo land of Kauihi. There are seven patches as described by Hoopalake.

The Keula land claimed by Kauihi is not cultivated nor has it been so for a long time.

The King's Land Agent made no objection to this claim.

Claim 8340. Kaiwinui. (Deceased).

Kanealii, sworn, says claimant died in the latter part of the year 1848. His widow's name is Makaiopulani. Witness knows the Kalo land claimed by Kaiwinui in Hauula. It consists of three patches, joined together, forming one piece.

It is bounded on the N. by Hoopalake's land, - E. by Kaiwinui's House Lot, - S. by the stream, and land of Koaniani, - W. by the Kula land.

The House Lot of Kaiwinui adjoins the Kalo patches. There is one house on it. It occupied this place for over five years.

The Kula land claimed is unsullivated waste land.

Kaailaau, sworn, says he knows the Kalo patches and House Lot. The latter is not enclosed. He confirms the testimony of Kanealii.

The King's Land Agent made no objection to this claim.

Claim 8487. Keoho. (Deceased).

Kaailaau, sworn, says he knows the kalo land claimed by Keoho in Hawaii. It consists of eight patches, six of which are cultivated in kalo, and the balance are planted with something else. It is bounded on the N. by Keokoi's land, - E. by Kaailaau's land, - S. by Keokoi's land, - W. by a water course. Witness knows no Kula land cultivated by etc. Keoho died in the latter part of 1848. Kailielele his Grand daughter now has the claim.

Kanealio, sworn, says he knows the kalo land of Keoho. It is as described by the last witness.

The King's Land Agent made no objection to this claim.

Claim 8356. Kane.

Kanealii, sworn, says he knows the Kala land claimed by Kane in Haauula. It consists of five patches, three on the river side and two mauka in the Kula. The patches on the river side are bounded on the N. by Kaneunui's land, - E. by Kanealii's land, - S. by the last and Kahoe's land, - W. by Kaleshi's land. The 2 patches mauka are bounded on the N. & E. by the Kula, - S. by the Kouohiki and Koekeo, - W. by Koekeo's land.

Witness knows the fish pond claimed by Kane, it is maikai of witness' house. It is bounded maikai by a Hau tree, - mauka and the other sides by the grass land. Kane has held said land and fish pond for a great many years.

Kaaulaau, sworn, says he knows the Kala land and fish pond of Kane, they are the same as described in the testimony of Kanealii the first witness.

The King's Land Agent made no objection to this claim.

(There is a River included in this claim, but the Commissioner, G. M. Robertson, is of opinion that such a claim could not be sustained.)

Claim 8582.

Kanihooi.

Kawahine, sworn, says he knows the Keala land claimed by Kanihooi in Kaipapau. There is no part whatever of the said land cultivated at present by Ott. They were small temporary patches.

Hoopalake (the son of Ott) says there is no part of the land claimed by Kanihooi in Kaipapau cultivated at present, nor has it been for some time on account of the inroads of the cattle.

(The Keala land claimed by Kanihooi was proved in evidence given yesterday to belong to Kealoha 8338.)

Claim 8341. Kahunahana.

Punipaka, sworn, says he knows the kula land claimed by Kahunahana in Haucula. There are four patches, all joining together in one piece. This piece is bounded on the N. by the land of Kuhema, - E. by a watercourse, - S. by the land of Poopuu, - W. by the land of Koaai. Olt has held the land from the time of his ancestors. The kula land claimed by Kahunahana is uncultivated and unenclosed. Witness knows Claimant's House Lot. It is unenclosed and contains 3 houses.

Kaailaau, sworn, says he knows the kula land of Olt. There are 4 patches bounded as set forth by Punipaka. Knows the House Lot of Olt and the kula land formerly cultivated by him.

Kamealii, sworn, says he knows the kula land formerly planted by Olt near his House Lot. It was planted in 1849, and much of the produce was destroyed by the horses. It is bounded on the N. by the land of the Konoiki & Kahoopii, - E. by the Hog Wall, - S. & W. by the Konoiki. Said piece contains about half an acre.

The King's Land Agent made no objection to this claim.

Hauula 4th Sept. 1850.

Claim 8417 }
 8442 } Kaise.

Waiauna, sworn, says he knows the kula land of Kaise in Hauula. It consists of three patches forming one piece. It is bounded on the N. by Mahoni's land, - E. by Makalohi's land, - S. by the Kula land, - W. by Kaubi's land. Claimant has held it for seven years. The kula land claimed by Kaise is not cultivated - it is in the mountain.

Kaise withdraws claim 8442. It was written for him by another man and included a great deal more than he pretended to claim.

Kanealii, sworn, says he knows the 3 kula patches of Kaise and they are as described by the last witness.

The King's Land Agent made no objection to this claim.

Koeko, sworn, says he knows of 2 kalo patches belonging to Ott. This piece is bounded on the N. by Hina's land, - E. by Kuehema's land, - S. by Hoasi's land, - W. by Katchu's land. (Kouohiki's)

Witness knows another piece called Kapunaiki belonging to Ott. There are 6 kalo patches in this piece. It is bounded on all sides by the Kouohiki's land.

There is another piece mauka containing 2 kalo patches. It is bounded N. by Kaailaau's land, - E. by Kahanaumauka's land, - S. by the haulua's, - W. by Koeko's land.

(See 8184). Witness also knows the 2 kalo patches (makai) which were claimed by Haehae. Kamosilili's widow has planted this piece and got the produce since her husband's death. This piece is bounded on the N. by the Kouohiki, - E. by a clump of Lauhala trees, - S. & W. by Kamaka's land. Kamosilili had possession of these lands since before witness remembers. Witness knows the House

Lot of Kamosilili. It is not enclosed. There are 3 houses on it.

Kaailaau, sworn, says he knows the 1st piece claimed by Kamosilili. It belongs to the Kouohiki and has been cultivated on his poalima. Witness confirms Koeko's testimony in regard to all the other pieces. Kamosilili died in the latter part of 1848. Khealie is his widow.

The King's Land Agent, Mr. Hopkins, objected to the claim for the first piece, as it was cultivated by the Kouohiki's labor.

Claim 10972 }
 10975 } Waiaua.

Claimant withdrew the Claim 10,972. It was drawn up by another person for him and was intended to provide for the extinction of natives' rights in the forests.

Kaailaau, sworn, says he knows the land of Waiaua in Hauula. There are 3 pieces. The first piece contains 4 kalo patches, & is bounded E. by Keawe's land, - S. by the Keolu land, - W. by the Honohiki & Makalohi's, - N. by the Honohiki.

The second piece contains 2 kalo patches, & is bounded S. by Kai's, - W. by Keawe's land, - N. by the same, - E. by Kamaka's land.

The third piece contains one kalo patch, & is bounded N. & E. by the Honohiki, - S. by Kalua's land, - W. by Kahunahana's land.

Olt has occupied this land for over ten years.

Kanealii, sworn, says he knows the land of Waiaua. It is the same as set forth in the testimony of Kaailaau.

The King's Land Agent made no objection to this Claim.

Claim 8591 }
8415 }

G. P. Koekoe.

Kaailaau, sworn, says he knows the Kalo land of Koekoe in Hanalei. There are two separate pieces.

The first piece contains 4 Kalo patches, - Bounded on the N. by Keoko's land, - E. by the land of Kaneheliu and Kekio, - S. & W. by Kula land of the Kouhiki. The second piece contains 6 Kalo patches, - Bounded on the N. by Kula land of Blt, - E. by the Stream, - S. by Kaneheliu's, and Kaiaia's lands, - W. by Kula land.

The Kula land claimed by Koekoe is bounded on the N. by the Stream, - E. by Kula land claimed by Hina, - S. by Blt's Kalo land, - W. by the Kouhiki. One side only of this land is enclosed. It was formerly enclosed by a wooden fence, now gone. It is not now in cultivation, but was cultivated by Koekoe from 1841 down to 1849. Blt has held these lands since he was a boy.

Witness knows the House Lot of Koekoe. It is bounded N. by the sea beach, - E. by the River, - S. by the River and Lauhala trees, - W. by Kamohilili's House Lot. It is enclosed by a stone wall.

Kaneumi, sworn, says he knows these lands of Koekoe and confirms the testimony of Kaailaau.

Kanealiu, sworn, says the Kula land claimed by Koekoe adjoins that claimed by Hina. A portion of it only was cultivated in 1848. No part of it was cultivated in 1849. Never saw the whole of this land under cultivation at once. Up to 1848 any Kanaka might go there and plant who wished to do so. This is the place where Kapai forbid the

building of a fence last February. It was formerly enclosed by a wooden fence. This fence was built by Kookoe and Hina together.

Kaailaau, re-examined, says the people stated by Kanealii to have cultivated this land were employed by Kookoe, who reaped the benefit of the cultivation. The greater part of the land was cultivated in 1848 & 1849. Some of the men who worked for Kookoe were Kesioi, on the side next the stream, Kahanaunaiikai, Kaailaau, and the balance by Kookoe himself in 1848. This Kula land was formerly held by Kookoe's father who died in 1841.

G. G. Hopkins, the King's Land Agent, objected to the claims for Kula Land,-
1st Because it is entirely without signs of cultivation.

2nd Because it is not enclosed.

3rd Because they were advised by Alapai, the Sub-Agent, not to take in that land to the prejudice of the Kouwhiki.

Claim 8144. Hoaaia.

29

Kaneumi, sworn, says he knows the Kala land of Hoaaia. It consists of two patches, forming but one piece. It is bounded on the N. by Kamosilili's land, - E. by Kahumanana's land, - S. by Kanealii's land, - W. by Malche's land. Claimant has occupied this land for perhaps 20 years. The Keela land claimed, is abandoned.

Kanealii, sworn, says he knows the land of Hoaaia and confirms the testimony of Kaneumi.

The King's Land Agent made no objection to this claim.

Claim 5354 C. Nalehu.

This is a claim which cannot be found in the file for Haunala.

Koekoe, sworn, says he knows that Nalehu's claim was drawn up by Kalepo in the year 1848, but supposes it must have been lost. Witrup knows the Kale

land of Olt in Haunala. It consists of six patches, forming one piece, Bounded on the N. by the Kula land of Hina, - E. by Hina's Kale land, - S. by Kaneumi's land, - W. by Kaneumi & the Koushiki.

Olt had a House Lot some years ago, but it is included in the land set apart for the endowment of the new church.

Punipaka, sworn, says he knows the Kale land of Nalehu, - There are six patches as described by Koekoe.

The King's Land Agent made no objection to this claim.

Claim 3400. Mookulama.

Koekoe, sworn, says he knows the Kalo land of Etl in Haunala. It consists of 3 patches, forming one piece, - Bounded on the N. by Kachae's land, - E. by Keliuwaiwaiolo's patch of Kalo, - S. & W. by the Kouobiki's land.

Etl has no Kula land under cultivation in Haunala. He has held the Kalo land since 1847. Etl has one other Kalo patch, in Waipilopilo, Haunala. It is bounded N. by the River, - E. by the sea side, - S. by the House Lot of Koaniani, - W. by Koaniani's land. Etl has also a House Lot in Waipilopilo. It is not enclosed. There is one house on it.

Hoopalake, sworn, says he knows the land of Mookulama, in Kaipapau. It consists of one piece of cultivated land, which is enclosed. It is bounded on the N. by Kanichoo's land, - E. by a stream, - S. by the Kula land of witness, - W. by the Pali.

Etl has held this land for at least 20 years.

The King's Land Agent, made no objection to this claim.

Claim 5813.

Kaha.

(A woman)

Kaua, sworn, says he knows the kula land claimed by Kaha, in Punaluu. There are 3 pieces. The first piece contains four patches, 3 of which are nahahehe and one in cultivation. The 3 patches have not been cultivated by Olt for many years. The cultivated patch is bounded on the Hauula side by a water course, - on the makai and Kaneohe sides by the Konoiki, - Mauka by water course.

The second piece contains 6 patches, and is bounded on the Hauula side by the Kula land, - Makai the same, - Kaneohe side by the nahahehe, - Mauka by a water course.

The third piece contains one kula patch and the House Lot. This piece is bounded Mauka by the Kula, - same on all sides. The House Lot is not enclosed. There is one house on it. Olt and her parents have held this land since the time of Kamehameha I.

Wahia, sworn, says he knows the land of Olt. He confirms the testimony of the last witness.

Kawana, the Konoiki had no objections to offer to this claim.

Punaluu 5th Sept. 1850. 33

Claim 3734. Maiahe.

Kaheakua, sworn, says he knows the Kalo land of Maiahe in Punaluu. It consists of four patches, joining together, and forming one piece. The House Lot of Olt adjoins the Kalo land. It is bounded on three sides by the Pali, - Mauka by a water course.

There is one house on it. The House Lot is not enclosed. Olt and his parents have held this land since the time of K.I.

Ahia, sworn, says he knows the land of Maiahe. He confirms the statements of the last witness.

Kawana, the Kouohiki, made no objection to this claim.

(See page 95)

Claim 3746. Wahineomua.

Claimant, who is an old and feeble man, appeared and stated that he wished to withdraw his claim, as he lives altogether with his children Kukauniumi and Pahakae, who have both got claims before the Board.

Claim 3881. Pahakae.

Kioululu, sworn, says he knows the Kalo land of Pahakae in Punaluu. It consists of 3 patches, in one piece, bounded on Hamula side by Kukeawe's land, - Makai by Kiheloa's land, - Kaneohe side by Hihia's land, - mauka by Paupan's land. Olo and his relations have held the land for over ten years.

Keole, sworn, says he knows Pahakae's land. There are three patches as set forth by the last witness.

Kawana, the Konoitiki had no objection to this claim.

Claim 4364. Kukaumiumi.

Kawelo, sworn, says she knows the land of Olt. It consists of five Kalo patches in one piece, - Bounded on the Kaneohe side by Kuolulu's land, - Makai by the same, Haunala side by Kukeawe's land, - Mauka by Paupau's land.

Claimant has a House Lot also, near the sea side. It is not enclosed. There is but one house on it. Olt and his ancestors have held it since the days of H.I.

Kuolulu, sworn, says he knows the five Kalo patches of Olt, and confirms the testimony of Kawelo in relation thereto. He thinks the House Lot belongs to Waipuu.

(The Commissioner could find no claim from Waipuu in the Punaluu file).
Kawana, the Kouohiki, made no objection to this claim.

Claim 5850. Kahiakua.

Hahia, sworn, says he knows the Kale land of Ctt in Punaluu. It consists of four patches, forming one piece.

It is bounded on three sides by a Pali, Makai by the river. Claimant has no Kula land under cultivation. He has a House Lot which adjoins the Kale land. It is not enclosed. There is but one house on it which is occupied by Ctt. Ctt and his ancestors have held this place since the time of K.I.

Molea, sworn, says he knows the 4 Kale patches of Kahiakua, also the House Lot of Ctt. He confirms the testimony of the last witness.

Hawana, the Kouohiki, made no objection to this claim.

Claim 6952. Kumanna. (Deceased)

37

Kaooa, Sworn, says Kumanna died in the latter part of 1848. He left a son named Maakulu, who now appears in his father's stead.

Witness knows the Kalo land claimed by Kumanna. It consists of fifteen patches, four only of which are at present cultivated. They form but one piece, - Bounded on the Kaneohe side and Mauka by a Pale, - on Haulea side by a watercourse, - Makai by Molea's land. It occupied this land for a long time.

Witness knows Kumanna's House Lot. It is included in the boundaries given above. There is but one house on it. It is not enclosed.

Molea, sworn, says he knows Kumanna's land in Punaluu. There are fifteen Kalo patches and the House Lot as described by the last witness.

Hawana, the Koushiki, made no objection to this claim.

Claim 6957. Haniko. (A woman, deceased).

The Koushiki states that Haniko died at moanalu since the date of her application. She left a son who is now at Lahainaluna for education, whose name is Naili.

Keopohaku, sworn, says he knows the Kalo land of Elt in Punaluu. It consists of one patch, bounded on all sides by the land of the Koushiki. She had a House Lot also. It is not enclosed. The house has fallen down since the boy went to school. The Kalo patch has been planted by a man named Opa. Elt held the land ever since witness remembers.

Ikeole, sworn, says he knows this land and Kahunakale, and confirms the testimony of the last witness.

Kawana, the Koushiki, made no objection to this claim.

Claim 4358. Kaumualii.

Molea, sworn, says he knows the Kalo land of Olt in Punaluu. The first piece consists of seven patches, - Bounded on the Kameohe and Hauula sides by a pali, - Mankaa by witness' land, - Makai by Manuula's land.

The second piece contains eight patches, only one of which is at present cultivated. They are joined together, forming one piece. Bounded on the Kameohe side by a water course, - Mankaa by Kahaleaahie's land, - on the Hauula side by a pali, - Makai by Kau trees. Olt has a House Lot adjoining this piece of Kalo land. It is not enclosed. There are two houses on it. Olt has held the land for over ten years.

Hahia, sworn, says he knows the land of Kaumualii. He confirms the testimony of the last witness.

Kawana, the Konoheke, made no objection to this claim.

claim 8962. Kukeawe.

Oopa, sworn, says he knows the land claimed by Kukeawe in Punaluu. It consists of 13 Kalo patches, six only of which are cultivated at present. The whole forms but one piece, - Bounded Makai by Kukeawe's land, - on Kaneohe side by the Kouohiki, - Mauka and Hanuula side by a watercourse. Olt has a House Lot also.

It is near the sea side, - Bounded by the sea on one side, - Mauka by the Kalo land of Olt, - on Kaneohe side by Kiohulua's House Lot, - on Hanuula side by the river. Olt and his ancestors have held this land since the time of Kamehameha I.

Hahua, sworn, says he knows the land of Olt. There are 13 patches as described by the last witness. He also knows the House Lot of Olt, and confirms the testimony of Oopa.

Kawana, the Kouohiki, - made no objection to this claim.

Claim 6956. Kaialiili.

Keopohaku, sworn, says he knows the land of Kaialiili in Punaluu. It consists of 10 Kalo patches joining together and forming one piece. It is bounded Makai by Kaahu's land, - On Kaneohe side by a pali, - Maunaka by Kaahu's land, - On Maunala side by Hahia's land. Claimant has held the land for twelve years.

Keole, sworn, says he knows the land of Kt, and confirms in full the testimony of the last witness.

Kawana, the Konoiki, had no objection to make to this claim.

Claim 3416. Miteikolo. (Decatur)

Kaoo, sworn, says he knows the land of Miteikolo in Punaluu. It consists of fifteen kalo patches, joining together and forming one piece, - Bounded mauka by the land of Manuella, - On Hanuula side by the stream, - Makai by the land of Karii, - on Kameohe side by a pali. Olt held the land from the time of his ancestors until he died in 1848. His wife is also dead. They left a daughter called Lohapa. Keele takes care of the land and the child.

Kauha, sworn, says he knows this land. There are fifteen patches as set forth by the last witness.

Kawana, the Kouohiki, had no objection to make to this claim.

Claim 3959. Naikolo.

43

Hahia, sworn, says he knows the land of
elt in Punaluu. It consists of sixteen kalo
patches, six only of which are at present
cultivated. The whole join together, forming
one piece, - Bounded Mauka and on Kaunala
side by a pali, - Makai by Kiamama's
land, - on Kaneohe side by land of His.
The House Lot is included in the above
boundaries. elt has lived on this land
five years.

Kawana, the Koushiki, had no objections
to make to this claim.

Claim 3849. Paale. (Deceased)

Hahia, sworn, says Paale died in 1849.
He left no relatives that witness knows of.
The land has been left uncultivated
since claimant's death.

(The above testimony was confirmed
by the statements of several other per-
sons).

Kawana, claimed this land for the Ke-
nohiki. There is but one kalo patch.

Claim 3479. Aha. (Deceased)

Oopa, sworn, says Aha died in 1848. He left no heirs that witness knows of. The Kalo land claimed by Aha belonged to the Houwhiki. It was a Koele.

(This testimony was confirmed by several persons present).

Kawana claimed this land for the Houwhiki as it was a Koele.

Claim 3434. Skeole.

Huni, sworn, says she knows the land of Skeole in Punaluu. It consists of nine Kalo patches. The first piece contains 6 patches. It is bounded Mauka by Kahau's land, - on Hamula side by a stream, - Kairuaana's land, - Makai by Kauiha's land, - on Kaneohe side by a watercourse.

The second piece consists of 3 patches. It is bounded Mauka by Kahau's land, - Hamula side by a stream, - Makai by Kaui's land, - on Kaneohe side by the land of Mikiikolo, (Lahapaa).

The House Lot of Ct is included in the first described piece. Ct has held this land for 9 years.

Keopohaku, sworn, says he knows the land of Skeole. There are two pieces as described by the last witness. He confirms Huni's testimony in full.

Kawana, the Houwhiki, had no objection to make to this claim.

Claim 5851. Kaipuea. (Deceased).

Kahaleaahu, sworn, says Kaipuea died lately leaving Manuela, her son, to inherit her property.

Witness knows the Kalo land of Etl in Punaluu. It consists of eight patches now in cultivation. The 8 patches join together, forming but one piece, - Bounded on the E. by Kula land, - S. by the land Ka-
muualii, - W. by a watercourse, - N. by Kalo land of Mikikolo. The House Lot of Etl is included in the above. Etl held the land from the time of Kam. I.

Kahia, sworn, says he knows the land of Kaipuea. There are 8 patches as set forth by the last witnesses. Confirms the testimony of Kahaleaahu.

Kawana, the Koushiki, had no objection to make to this claim.

Punaluu 6th Sept. 1852.

Claim 3419. Manuela.

Manuela, appeared in person and stated that the application dated January 8th 1848 was his, but that the land claimed by him is included in the claim of Kaipurea, N^o 5851. Manuela is the heir of the woman Kaipurea, deceased.

Claim 10,209. Manuela.

Claimant states that this application was made for him by some person while he was absent. He says he claims nothing under this document.

Claim 5884. Keohoena. (Deceased)

Oopa, sworn, says he knows the land of Olt in Punaluu. It consists of two pieces.

The first piece contains 3 Kalo patches, - Bounded on Kaneohe side by Pukooli's land, mauka by Mui's land, - on Hanalei side by a water course, - Makai by the land of Hahia.

The second piece of one patch is bounded on Kaneohe side by the Keula land, - mauka by a pali, - on Hanalei side by Kiheloa's land, - Makai by Hog Wall.

The house Lot is near the sea. It is not enclosed. There are two houses on it. Keohoena and his ancestors have held the land for a very long time. Keohoena died in 1848, leaving his property to Paupau, who now appears to claim this land.

Hahia, sworn, says he knows the land and House Lot of Keohoena. He confirms in full the testimony of the last witness.

Kawana, the Koushiki, had no objection to make to this claim.

Claim 6953. Kaiava.

Opa, sworn, says he knows the kalo land of ctt in Punaluu. It consists of 15 kalo patches, 5 of which are at present in cultivation. The whole are joined together, forming one piece, - Bounded Mauka by the land of Pilo, - on Hamula side by a stream, - Makai by Swimm's land, - on Kaneshe side by a watercourse. Kaiava died in 1848, leaving a son called Kani who now holds the land.

ctt had a House Lot also. It is not enclosed. There are two houses on it. The House Lot is in Makana. Kaiava held the land from the time of Kani: I.

Ikeole, sworn, says he knows the land of Kaiava. It consists of 15 patches as set forth by the last witness. He knows the House Lot also and confirms the testimony of Opa.

Kawana, the Kouhiki, says that Kani the heir of Kaiava is an industrious young man, and he has no objection to make to this claim.

Claim 5808. Kiamanu.

Hahia, sworn, says he knows the land claimed by Kiamanu in Punaluu. It consists of 13 patches planted with Kala and 6 patches planted with other fruits. The whole are joined together, forming one piece. The House Lot also is included in this piece. It is bounded on the Kauhala side by a stream, - Mauka and Kaula side by a pali, - Makai by a stream. Kiamanu has held this place for five years.

Hio, sworn, says he knows the land of Olt. There are 19 patches as set forth by the last witness. Olt has a House Lot also in the same place.

Hawana, the Koushiki, has no objection to make to this claim.

Claim 9962. Lima. (A woman deceased)
 Keole, sworn, says he knows the land of
 Lima in Punaluu. Lima died in 1848,
 and all the lands held by her were
 given back to the Konoheiki's Agents.
 The lands have since come into the
 hands of other people.

Claim 4356. Kaikuaana.

Muu, sworn, says he knows the land of
 Clt in Punaluu. It consists of 11 Kalo
 patches, forming one piece. It is bounded
 on Kaneohe side by Kauka's land, on all
 the other sides by the Konoheiki. The House
 Lot is close to the Kalo land. It is not
 enclosed. There are 3 houses on it. Clt
 and his parents held this place from
 the time of Kamehameha I.

Oopa, sworn, says he knows the eleven
 Kalo patches and House Lot of Clt in
 Punaluu. He confirms the testimony
 of last witness.

Kawana, the Konoheiki, has no objec-
 tion to make to this claim.

Claim 4400.

Kahau.

51

Hahia, sworn, says he knows the land of Kahau in Punaluu. It consists of 22 kalo patches, 8 of which are now full of kalo.

This piece is bounded on the Kamehame side by a stream, - Mauka by Kaunualii's land, - on Hanalei side by a water course, - Makai by Kekoa's land.

Clt has a house Lot, also close to the above land. It is not enclosed. There is one house on it. Clt and his ancestors have held this land since the time of Kam: I.

Kahaleaahu, sworn, says he knows the land and House Lot of Clt, and confirms in full the testimony of the previous witness in relation thereto.

Kawana, the Konoehiki, had no objection to make to this claim.

Claim 4445. Kalakoa. (Deceased)

Ahne, sworn, says Kalakoa died in 1848, leaving a widow, to whom witness was ~~next~~ subsequently married. When witness married the widow she held the land of Kalakoa. Witness does not know whether his wife gave up the land in Punahou to the Honohiki or not. His wife died in 1849. After she died witness cultivated the land in question. Kalakoa left a son named Josepa who is now living in Hauula.

Keopohaku, sworn, says he knows the land of Clt, but does not know whether the widow gave it up or not.

Huheleloa, sworn, says he knows the kalo land of Clt in Punahou. There are 8 kalo patches, in two pieces. The first piece of 6 patches is bounded on Kaneohe side by a watercourse, - Mauka by Pikoole's land, - on Hauula side by Hahia's land, - Makai by the Honohiki. The second piece of 2 patches is bounded on Kaneohe side and Makai by a fence, - Mauka by a pali, - on Hauula side by the Keula.

Clt had also a House Lot close to the last piece. It is not enclosed. There is one house on it. Kalakoa occupied the land for a long time.

Hahia, sworn, says he knows the kalo land and House Lot of Clt, and confirms the testimony of the previous witness.

Kawana, the Honohiki, had no objection to make to this claim.

Claim 3954. Kawaa.

Oopa, sworn, says Kawaa died in 1848, and left neither widow nor child. His land reverted to the Kōwhiri, and is included in the land of Kaikuaana.

(This testimony was confirmed by several persons).

Claim 4362. Kaakui.

Claimant appeared in person and stated that the land embraced in this claim is the same that is now claimed for the son of Kalakoa. It had no other land in Punaluu.

Claim 3810. Liki.

Pawaa, sworn, says that Liki died in 1848, and left no widow, nor child or other relative that witness knows of. Before his death, it gave up his land in Punaluu to Oopa, the Deputy Kōwhiri.

Kawana, the Kōwhiri, stated that the land in question has for some time past been held and cultivated by Oopa.

54
Claim 4433. Kaiwinui.

Hoopoi, sworn, says she knows the land of Clt in Punaluu. It consists of 16 kalo patches, ten of which are now full. The whole form one piece, bounded on the Kaneohe side by a watercourse, - on mauka side by Kai's land, - on Hauula side by a stream, - Makai by Waipu's land. The House Lot is included in this land. Clt and his wife have held this place for a long time.

Hahia, sworn, says he knows the land of Clt. It consists of 16 patches. The House Lot is included in this piece and there are 3 houses on it.

Kawana, the Koushiki, had no objection to make to this claim.

Claim 7694... Kahalaaku.

Habia, sworn, says he knows the land of Clt in Punahoa. It consists of 8 kalo patches, 4 of which are now full. It is bounded on Kaneohe side by a stream, - Mauka by a watercourse, - Hauula side by the Kula land, - Makai by Kaumualii's land.

Clt has also a piece of land in cultivation in the Kula. It is planted with water melons and sweet potatoes. Bounded Mauka by a watercourse, - Hauula side by a pali, - Makai by Kaumualii's land, - Kaneohe side by a stream. This piece contains about an acre of land and is not enclosed.

Clt has a House Lot also. It is not enclosed. There is one house on it. He and his ancestors have occupied it since the time of Kam: I.

Hio, sworn, says he knows the lands and House Lot of Clt, and confirms in full the testimony of the last witness in reference thereto.

Kawana, the Kouohiki, had no objection to offer to this claim.

Claim 10212. Moleda.

Hio, sworn, says he knows the land of Moleda in Punaluu. It consists of 18 kals patches in full cultivation and five in bushes. The whole 23 patches join together forming one piece. It is bounded on the Kaniokhe, Maauka and Makai sides by a stream, - Kaunala side by a pali.

Clt has a piece of Kula land also in cultivation. About half an acre. It is bounded Maauka and all other sides by a stream. The House Lot is included in this piece. There are two Houses on it. Clt has held this place since the time of Kam: I.

Oopa, sworn, says he knows the land of Moleda, and fully confirms the testimony of the previous witness.

The Koushiki had no objection to make to this claim.

Claim 4016. Kauna. (Deceased)

Opa, sworn, says Kauna died in 1849, leaving no heir. Before his death he restored the land held by him to the Konoiki, who has held it ever since.

Claim 4341. Kahopukahi. (Deceased)

Opa, sworn, says Claimant died in 1848, leaving neither widow nor child. At his death the land reverted to the Konoiki who has held it ever since.

Claim 4365.

Kiesolulu.

Pahakae, sworn, says he knows the land of Kiesolulu in Punaluu. It consists of 6 kalo patches all in one piece. Bounded on the E. by the land of Makaanua, S. by Paupau's land, - W. by Kukuumi's land, - N. by the House Lot of Clt.

The House Lot of Clt is near the sea-side. It is bounded on one side by a stone wall running along the sea beach, and the kalo land of Clt bounds it maauka. There are 3 houses on it. Clt who is an old man has occupied this place since his youth.

Oopa, sworn, says he knows the land of Clt. There are six kalo patches and a House Lot, as described by the last witness.

The Konohiki had no objections to make to this claim.

Claim 10,226. Maliko. (a woman)

Kukeawe, sworn, says he knows the land of Maliko in Tunaluu. It consists of four kalo patches. They form one piece, bounded Mauka and Kaneohe sides by a pali, - Hanuula side by Kaituaana's land, - Makai by Kaha's land.

Olt has a House Lot also near the sea side. It is not enclosed. There are two houses on it. Olt has held this place since the time of Kam: I.

Oopa, sworn, says he knows the land and House Lot of Maliko, and fully confirms the testimony of the last witness.

The Honolulu had no objections to make to this claim.

Claim 5948. Puahi. (Deceased)

Pahakae, sworn, says Puahi died in 1848. He left all his property to Muu his younger brother. Witup knows the land of Puahi in Tunaluu. It consists of 8 kalo patches, one only of which is full at present. The whole forms one piece, - Rounded Makai by Paupau's land, - Kaneohe side by Pikoouli's land, - Mauka by Kashi's land, - Hauula side by a stream. The House Lot of claimant is included in the above piece of land. Puahi lived on this place all his life.

Oopa, sworn, says he knows the land of Puahi, there are 8 patches as described by last witness, whose testimony he confirms.

The Kouohiki had no objections to make to this claim.

Claim 8172. Hakia.

Pahakar, sworn, says he knows the land of Hakia in Punaluu. It consists of 6 kula patches, forming one piece, Bounded Makai by the land of Kauli, - on Kaneohe side by Kaahui's land, - Mauka by Paupau's land, - Hauula side by Witness' land.

It has a House Lot in Makana. It is fenced in, and bounded East by a stream, - South by Kalo land of Kamaalii, - West by Kaui's land, - North by Ka-chukukou's land.

It has a piece of kula land also in cultivation. It is not enclosed and contains perhaps 3/4 of an acre of land. It is planted with potatoes and melons. It has held these lands for six years.

Oopa, sworn, says he knows the land of ctt. The kula land is in full cultivation. The House Lot is as set forth by the last witness.

The Koushiki had no objections to make to this claim.

Claim 6081.

His.

Hahia, sworn, says he knows the land of His in Tunaluu. It consists of fifteen Kalo patches, 4 only of which are full at present. The whole form one piece, Bounded on the Kaneohe side by a pali, Mooka by a stream, - on Haunula side by a pali, - Makai by Kiamann's land.

It has a piece containing five Kalo patches in another place, - Bounded Mooka by a stream, - Haunula side the same, Makai by Maiahe's land, - Kaneohe side by a pali.

It has also a House Lot. It is not enclosed. It is surrounded by a pali, There is one house on it. Claimant and his ancestors have held this land since the time of Kam: I.

Opa, sworn, says he knows the lands of claimant and his House Lot also, and confirms in full the testimony of the last witness.

The Konohiki had no objections to make to this claim.

Claim 8435.

Kukeleloa.

63

Kauha, sworn, says he knows the land of claimant in Punaluu. It consists of two pieces. The first contains 2 Kalo patches, and is bounded Mauka by the land of Pahakae, on Haaula side by Kukululu's land, - Makai by the Kouohiki, - on Kaneohe side by the land of Kaikuaana.

The second piece contains 2 patches, and is bounded on Haaula side by Kaikuaana's land, - Makai by Kauha's land, - on Kaneohe side by the Kouohiki, - Mauka by Maliko's land.

It has a House Lot also adjoining the last described piece. It is enclosed by a stone wall, and bounded Makai by the seaside and on the other sides by the Keula land. There is one house on it. Claimant and his ancestors have held the land from the time of Kam: I.

Popa, sworn, says he knows the two pieces of land and House Lot claimed by Kukeleloa, and confirms the testimony of the last witness.

The Kouohiki had no objections to make to this claim.

Claim 6046. Oopa.

Kukeawe, sworn, says he knows the land of Oopa in Punaluu.

The first piece contains 6 patches planted with kalo, and is bounded Mauka by Kaaoo's land, - Haaula side by Kamalii's land, - Makai by Kukeawe's land, - Kaneohe side by a stream.

The second piece contains ten kalo patches, and is bounded on Haaula side by a pali, - on all the other sides by a stream.

The third piece contains 5 patches planted with wauke, and is bounded on Kaneohe side by a stream, - Mauka and Haaula side by a pali, - Makai by Maiahe's land.

Claimant has a House Lot near the sea. It is not enclosed. There are 4 houses on it. Claimant and his ancestors have held the land since the time of Kam: I.

Hahia, sworn, says he knows the lands of Oopa. They are the same as described by the last witness.

The Koushiki had no objections to make to this claim.

Claim 4430. Kauhāa.

Kuheleloa, sworn, says he knows the land of Kauhāa in Punaluu. It consists of fifteen patches (including the land claimed by Poimāhoe N^o. 5897). The whole form one piece, bounded mauka by Pawaā's land, - all the other sides by the Kōnōhiki.

The House Lot of Kauhāa is included in the above boundaries. Claimant has occupied the place since the time of Kam: I.

Oopa, sworn, says he knows the land of Kauhāa. It consists of fifteen patches as described by the last witness. The House Lot is included in this piece.

The Kōnōhiki had no objections to make to this claim.

Claim 5894. Poomahoe.

Oopa, sworn, says the land claimed by Poomahoe was given by him to Kauhoo in 1849. Poomahoe has left Punaluu and gone to reside somewhere else.

(This testimony was confirmed by others present). See N: 4430.

Claim 7102. Toineii.

Oopa, sworn, says he knows of no man on the land of Punaluu called Toineii. He thinks it is intended for Kawainii who died in 1848, and whose land has since been given to other people to work.

Claim 4435. Keopohaku.

Kaikuaana, sworn, says he knows the land of claimant in Punaluu. It consists of seventeen kals patches, twelve of which are now cultivated. The whole form one piece, bounded on the Kaneohe side by a stream, - Mauka by the Koushiki, - Kaunala side by the land of Oopa, - Makai by Kaohi's land.

Claimant has a House Lot also near the seaside. It is enclosed by a stone wall. There are two houses on it. It is bounded by the sea beach on one side, and by the Keula land on all the other sides. Claimant and his ancestors have occupied this place from the time of Kam: I.

Muu, sworn, says he knows the land of Keopohaku. There are 14 kals patches. Knows the House Lot of claimant, and confirms the testimony of the previous witness in full.

Kawana, the Koushiki, had no objection to make to this claim.

Punaluu 7. Sept. 1850.

Claim 7433. Kekaula.

Oopa, sworn, says he does not know of any man by the name of Kekaula on the land of Punaluu.

(This was confirmed by all present and no person appeared to represent the claim).

Claim 8410. Kawi.

Kawai, sworn, says Kawi died in 1848, leaving all his property to Koo his brother.

Witness knows the land claimed by Kawi, in Waiona. It consists of one kalo patch and a piece of Kula land, joined together, forming one piece.

This is the same land that is claimed by Koo, N^o. 4352, and he is the heir of Kawi.

Claim 5812. Kaiwa.

Keiki, sworn, says he knows the land claimed by Kaiwa in Punaluu. It consists of seven kalo patches. The whole form one piece, bounded Mauka by a pali, - on Hauula side by Kukeawe's land, Makai and Kaneohe side by a stream.

Claimant has a piece of Kula land also in cultivation. It is not over an acre. It is bounded on Hauula side and Mauka by a pali, - Makai by the Koushiki, - on Kaneohe side by a stream. The House Lot of claimant is included in these boundaries. Claimant has occupied this place since 1836.

Kukeawe, sworn, says he knows the land of Kaiwa. There are 4 kalo patches. He knows the Kula land also with the House Lot, and confirms the testimony of the last witness.

The Koushiki had no objections to make to this claim.

Claim 4379. Kuulike.

Koo, sworn, says he knows the land claimed by Kuulike in Waianu. It consists of 3 Kalo patches and a piece of Kula land. The first piece, of 3 Kalo patches is bounded, Manka by witness' land, on Kaunala side by Keawai's land, - Makai by the Honohiki, - Kaneohe side by Keala's land.

The Kula land is all cultivated, and is bounded on three sides by the Honohiki, - on Kaneohe side by the land called Ma-kawa. The House Lot of claimant is included in this piece. Claimant has lived on this place since the time of Boki.

Kawai, sworn, says he knows the land of claimant, and Gully confirms the testimony of the last witness.

The Honohiki had no objections to make to this claim.

Claim 3480. Opunui.

Koai, sworn, says that Opunui died in 1848, leaving his land to Naukara, who now appears to claim it.

Witup knows the land claimed by Opunui in Waionu, it consists of 4 Kalo patches and a piece of Kula land.

The 4 Kalo patches form one piece, bounded on Hamula side by the land called Puhemiki, - Makai and Mauka by the Koushiki, - Kaneohe side by Kueva's land.

The Kula land is bounded the same as the Kalo land. Claimant's House Lot is included in this piece, and he has held this land since the time of Kam: I.

Koo, sworn, says he knows Naukara to be the heir of Opunui. Witup knows the four Kalo patches and the piece of Kula land, which is all planted.

The Koushiki had no objections to make to this claim.

Claim 4349. Kinoo.

Kooi, sworn, says Kinoo was taken very ill about 2 years ago and removed from Waiono to reside at Kaipapau. He gave up his land to the Honohiki at that time who has held it ever since.

(This was confirmed by those present, and no one appeared to represent this claim).

Claim 3844. Paia.

Kooi, sworn, says he knows the land of Clt in Waiono. It consists of 3 Kalo patches, forming two pieces. The first, containing 2 patches, is bounded on Haunala side by Koo's land, - Makai by Kaluhia's land, - Kaneohe side and Mauka by the line of Makana.

The second piece, of one patch, is bounded on Haunala side by Kekipi's land, - Makai by Kooi's land, - Kaneohe side by a stream, - Mauka by the Honohiki.

Claimant has a House Lot also, near the sea, enclosed. It is bounded Makai by sea beach, - Kaneohe side by the river, - Mauka by Kooi's land, - Haunala side by the Honohiki. Claimant has held this place since 1847.

Kipi, sworn, says he knows the land and House Lot of Paia, - they are as described by last witness.

The Honohiki had no objection to make to this claim. Clt has no Kula land.

Claim 4347. Kuaiwa.

Koo, sworn, says he knows the land claimed by Kuaiwa in Waiau. It consists of five Kalo patches and a piece of Kula land. The House Lot also is in the Kula.

This place is bounded on Kaunala side by Kaukani's land, - Makai by the Koro-hiki, - on Kaneohe side by witness' land, - mauka by the Koro-hiki. Claimant and his ancestors have occupied this land since the time of Kam: I. The Kula land is entirely cultivated.

Koai, sworn, says he knows the land of claimant, and confirms the testimony of the last witness in reference thereto.

The Koro-hiki had no objections to make to this claim.

44
Claim 4342. Kaluhiaia.

Koo, sworn, says he knows the land of claimant in Waionu. It consists of five kalo patches and a piece of kula land.

The first piece, of 5 kalo patches, is bounded on Hamula side by a watercourse, - Makai by the Koushiki, - Kaneohe side by the line of Makana, - Mauka by Paia's land.

The kula land is bounded Mauka by Koo's land, - Hamula side by a water course, - Makai by Koo's land, - Kaneohe side by Koala's land.

Kipi, sworn, says he knows the land of claimant in Waionu. It is as described by the last witness. The kula land is all planted.

The Koushiki of Waionu made no objection to this claim.

Kakaa, sworn, says he knows the kalo land of claimant in Puheemiki. It consists of 2 patches, bounded Mauka by Pah's land, - Hamula and Punaluu sides by the Koushiki, - Makai by Kahawa's land.

Witness is the Deputy Koushiki of Puheemiki and has no objection to make to this claim.

Claim 4015. Hookano.

Kawai, sworn, says Hookano's wife died in 1849, and then he left Waiau and went back to Moolokai where he belongs. He gave up the land to the Konoiki when about to leave, and the Konoiki has held it ever since.

(This was confirmed by those present, and no one appeared to represent this claim).

Claim 4354. Kealohi.

Kawai, sworn, says Kealohi died in 1848. Before his death he gave up his land to the Konoiki, who has since placed another man on it.

(This was confirmed by a relative of Kealohi who was present. He makes no claim to the land.

46
Claim 4370.

Kekipi.

Koo, sworn, says he knows the land of Kekipi in Waione. It consists of 3 Kalo patches and a piece of Kula land. The first piece, of 3 Kalo patches, is bounded Mauka and Makai by the Kouohiki, - on Hauula side by Kaino's land, - on Kaneoke side by the line of Makana.

The Kula land is all cultivated. It is bounded Mauka by the Kouohiki, - on Hauula side by Kealoha's land, - Makai by Koo's land, - on Kaneoke side by the line of Makana. Claimant has a House Lot also, near the sea. It is not enclosed. There are 2 houses on it. It adjoins on one side the line of Pukeemiki. Clt has lived there since the time of Kam: I.

Kawai, sworn, says he knows the land of Clt, and fully confirms the testimony of last witness. The Kula land claimed is all cultivated.

(The Kouohiki of Waione had no objection to make to this claim).

Lumimau, sworn, says he knows the land of Kekipi in Pukeemiki. It is all cultivated. Bounded on Hauula side by the line of Kepano, - Makai by Kaupapa's Kalo land, - on Punaluu side by the Kouohiki, - Mauka by a pali.

Kakaa, says he knows the Kula land of Clt in Pukeemiki. He confirms the testimony of last witness. Witness is the deputy Kouohiki of Pukeemiki.

Claim 4436.

Kalolohe.

47

Kakaa, sworn, says he knows the land claimed by Kalolohe in Waiona. It consists of 5 kalo patches and a piece of kula land.

The first piece, of 5 patches, is bounded mauka by Kaino's land, - on Hanuula side by the line of Puheemiki, - makai by the Kouhiki, - on Kaneshe side by Kahooalii's land.

The kula land is bounded mauka by a pali, - on Hanuula side by the line of Puheemiki, - makai by the Kouhiki, - on Kaneshe side by Kahooalii's land. The House Lot of claimant is included in this piece.

Claimant has also 2 kalo patches and a piece of kula land, in Puheemiki, all joined together. It is bounded mauka by a pali, - on all the other sides by the Kouhiki. Claimant and his ancestors have held these lands since the time of Kam. I.

Koo, sworn, says he knows the lands of Kalolohe in Waiona and Puheemiki, and confirms the testimony of the last witness. The kula land claimed is all planted.

The Kouhiki had no objection to make to this claim.

Claim 4375 Keloha.

Kawai, sworn, says he knows the land claimed by Keloha in Waianu. It consists of one kalo patch and a piece of kula land.

The kalo patch is bounded mauka by Kaluhiaia's land, - on Hanuula side and makai by the Kouohiki, - on Kaneohe side by Kekipi's land.

The kula land is bounded on Hanuula side by the line of Puheemiki, - makai by the Kouohiki, - on Kaneohe side by the line of Makana, - mauka by a pali. It is all cultivated. Claimant has lived on this land since 1847.

Koo, sworn, says he knows the land of Keloha. It is one kalo patch and a piece of kula land as described by the last witness.

The Kouohiki had no objection to make to this claim.

Claim 3717. Mauele. (Deceased)

Kamakaia, sworn, says Mauele died in 1848. His heir is a man by the name of Koo.

Witness knows the land of Mauele in Waianu. It consists of 3 kalo patches, - bounded on Hauula side by Kueva's land, - Makai by Koo's land, - on Kaneohe side by the line of Makana, - Mauka by the House Lot.

The House Lot adjoins the kalo land. It is enclosed by a wooden fence. There are 3 houses on it belonging now to Koo.

Claim 4352. Koo.

Kalolohi, sworn, says he knows the land of Koo in Waianu. It consists of 3 kalo patches. The patches are joined together in one piece, bounded on Hauula side by a road, - Makai by Kaluhia's land, - on Kaneohe side by Koo's land, - Mauka by the House Lot.

The single kalo patch is bounded, mauka by a Lauhala tree, - on Hauula side by Kueva's land, - Makai by Kaluhia's land, - on Kaneohe side by Koo's land.

Claimant has a piece of Kula land also in cultivation. It is bounded Mauka by a pali, - on Hauula side by a stone wall, - Makai and Kaneohe side by a stone wall.

Kipi, sworn, says he knows the land of Mauele (Claim 3717). It consists of 3 kalo patches and a House Lot as described

by Kamakaea.

Witness knows the lands claimed by
Koo (N: 4352) It consists of three kula
patches. Clt has also a piece of kula
land planted with sugar, melons, pota-
tots &c. The boundaries are the same
as described by Kalolohi.

Koai, the Konohiki, had no objections
to make to this claim.

Claim 4353. Hawaii.

Koo, sworn, says he knows the land claimed by Kawai in Waione. It consists of five kals patches and a piece of Kula land.

The first piece, of 5 patches, is bounded on the Hauula side by Ukeke's land, - Makai by the House Lot of claimant, - on Kaneohe side by the stream, - Mauka by the Kouohiki.

The second piece, viz; the Kula land, is bounded on Hauula side by the line of Puheemiki, - Makai by the Kouohiki, - on Kaneohe side by Koala's land; - Mauka by Koo's land. It is all planted.

The House Lot is not enclosed. It is near the sea side. There are two houses on it. It adjoins the House Lot of Paia.

Claimant has lived on this land ever since the time of Kam. I.

Kipi, sworn, says he knows the land of Kawai, and confirms in full the testimony of the last witness.

The Kouohiki had no objection to make to this claim.

Punaluu 9th Sept. 1850.

Claim 10,912. Uli. (Kauli)

Muu, sworn, says he knows the land claimed by Kauli in Punaluu. It consists of 9 Kalo patches, forming one piece, which is bounded Mauka by Ikeole's land, - on Kaunala side by the Koushiki, - Makai by Pawaas land, - on Kaneohe side by a pali. Claimant has lived there since the time of Kam: I.

Claimant's House Lot adjoins the above. It is not enclosed. There is one house on it.

Kawinui, sworn, says he knows the land and House Lot of Kauli. He confirms the testimony of the last witness.

The Koushiki had no objections to make to this claim.

Claim 6950. Kaehukukona.

Kauwala, sworn, says he knows the land of claimant in Makana. It consists of nine Kale patches, which join together, forming one piece. It is bounded on the Kauwala side by a watercourse, - Makai by the line of Tunaluu, - on Kaneohe side by a stream, - Mauka by Kaehi's land.

Claimant has a piece of Kula land also in cultivation. It is bounded on Kauwala side by a watercourse, - Makai by Kawai's land, - on Kaneohe side by a stream, - mauka by Kaehi's land. The House Lot of claimant is included in this piece.

Claimant has held this land for four years.

Kahia, sworn, says he knows this land. There are 9 patches of Kale. Knows the Kula land also. It is all cultivated.

Kiha, the Koushiki, had no objections to make to this claim.

Claim 10,715. Peahi. (Demand)

Kauwala, sworn, says Peahi died lately leaving a widow called Hamakua, who now appears to claim the land.

Witness knows the land claimed by Peahi in Makaua. It consists of four kalo patches and a piece of kula land.

The 4 kalo patches are all in one piece, bounded on the Kaneohe side by Kasha-kukona's land, - Mauka by a water course and kula land, - on Hanalei side and Makai by the line of Waiona.

The kula land is bounded on Kaneohe side by Kasha-kukona's land, - Mauka by a water course, - on Hanalei side by the line of Waiona, - Makai by Kawai's land.

The House Lot is included in this piece. Claimant held this land for 8 years.

Kamalii, sworn, says he knows the land of Peahi. It consists of four kalo patches and a piece of kula land as described by the last witness.

Kiha, the Honohiki, had no objections to this claim.

Claim 4447. Kanehue.

Kamalii sworn, says Kanehue died in 1848, leaving a son called Kaohi who now appears to claim the land.

Witness knows the land of Kanehue in Makana. It consists of 6 kalo patches and a piece of kula land.

The six kalo patches are all in one piece, bounded on Kaneohe side by a watercourse, - Mauka by the Kouohiki, - on Hanuula side by a watercourse, - Makai by Kaheukukouas land.

The cultivated kula is bounded on Hanuula side by the line of Waious, - on all the other sides by the Kouohiki.

The House Lot of claimant is included in this piece. Claimant has held this land for ten years.

Hahio, sworn, says he knows the land claimed by Kanehue, and confirms in full the testimony of the last witness.

Kiha, the Kouohiki, said he had no objection to this claim.

Claim 6958. Kukae.

Lalika, sworn, says he knows the land of Kukae in Makaea. It consists of two kalo patches and a piece of kula land.

The two kalo patches are bounded on Hauula side by Kamalii's land, - Makai by a water course, - on Kaneohe side by Hoomanana's land, - Mauka by the Koushiki.

The kula land is bounded Mauka by a pali, - on Hauula side by witness' land, - Makai by the sea beach, - on Kaneohe side by I's land. The House Lot of claimant is included in this piece.

Claimant has lived there ever since the time of Kam: I.

Kuhoomanana, sworn, says he knows the land of Kukae. It consists of two kalo patches and a piece of kula land as described by last witness.

Kiha, the Koushiki, had no objection to make to this claim.

Claim 8164 D.

Kuhoomanana.

Nailicha, sworn, says the claim of Kuhoomanana was drawn up by Kahaulou and sent to Honolulu by Kalili.

Knows the land of claimant in Makaea. It consists of 11 Kalo patches in 3 distinct pieces. The first piece, of 3 patches, is bounded Makai by Kamalii's land; on Kaneohe side by the line of Punaluu; Mauka by Kauike's land; on Haunula side by a water course.

The second piece, of 5 patches, is bounded Makai by Kiaka's land; on Kaneohe side by the land of witness; Mauka by Kamalii's land; on Haunula side by a water course.

The third piece, of 3 patches, is bounded Mauka by Claimant's House Lot; on Haunula side by Kukae's land; Makai by a water course; on Kaneohe side by the Koushiki.

Claimant has a piece of cultivated Kula land also; Bounded on Haunula side by a road; Makai by Claimant's Kalo land; on Kaneohe side by a water course; Mauka by Kahi's House Lot.

Claimant and his parents have lived on this land from the time of Kam: I.

Kamalii, sworn, says he knows the land of claimant, and confirms the testimony of the last witness.

Kiha, the Koushiki, had no objections to make to this claim.

Claim 8164 E. Kamalii.

Kauwala, sworn, says the claim of Kamalii was drawn up by Kaiwi a long time ago and sent to Honolulu.

Witness knows the land of claimant in Makana. It consists of 4 Kalo patches in two pieces.

The first piece, of 2 patches, is bounded Makai by a stream, - on Kaneohe side by the line of Punaluu, - Mauka by Kuhuomanana's land, - on Kaunala side by Ka-ahi's land.

The second piece, of 2 patches, is bounded Makai by Kuhuomanana's land, - on Kaneohe side by Kukai's land, - Mauka by Kamalii's land, - on Kaunala side by the Kouhiki.

Claimant has also a piece of Kula land in cultivation, - Bounded Mauka and Kaneohe side by a road, - on Kaunala side by a stone wall, - Makai by claimant's Kalo land. The House Lot of Clt is included in this piece.

Claimant and his parents have lived on this land since the time of Kani I.

Kuhuomanana, sworn, says he knows the land of Claimant. There are 4 Kalo patches and a piece of Kula land, well cultivated, as described by last witness.

Kiha, the Kouhiki, had no objection to offer to this claim.

Claim 8146 E. Nailieha.

Kaeewala, sworn, says the claim of Nailieha was drawn up at Teahi's house at the same time with several others, by Kahunuku, and is supposed to have been lost.

Knows the land claimed by Nailieha in Makaua. It consists of 4 Kalo patches forming one piece, - bounded on Punaluu side by a stream, - mauka by a water course, on Hanuula side by Kuhuomanana's land, - makai by Kauuku's land.

Claimant has a piece of cultivated Kula land also, - Bounded mauka by a pali, - on Hanuula side by the Kouhiki, - makai by the sea Beach, - on Kaneohe side by Kukae's land.

Claimant has a House Lot also. It is bounded on the makai side by a stone wall. The other sides are not enclosed. There is one house on it. Claimant has occupied this land since the time of Kam II.

Kukae, sworn, says he knows the land of Nailieha. There are 4 patches and a piece of Kula land, as described by the last witness.

Kiha, the Kouhiki, had no objections to offer to this claim.

Claim 5809. Kaaoa.

Kamalii, sworn, says he knows the land claimed by Kaaoa in Makaua. It consists of 7 kalo patches forming one piece, bounded Makai and Mauka by the Kouohiki, - on Kaneohe side by a stream, - on Hauula side by Kuhuomanana's land.

The second piece is cultivated kula land, - bounded on Hauula side by Kuhuomanana's land, - Makai by claimant's kalo land, - on Kaneohe side and Mauka by the Kouohiki.

The House Lot of claimant is distinct from these. It is enclosed by a wooden fence. It is bounded Mauka by the line of Punaluu, - on Hauula side by the Kouohiki, - Makai by a ravine, - on Kaneohe side by the line of Punaluu. Claimant and his ancestors have lived there since the time of Kam: I.

Kuhuomanana, sworn, says he knows the land of claimant. There are seven kalo patches and a piece of cultivated kula as described by the last witness.

Keke, the Kouohiki, had no objections to make to this claim.

Claim 6954. Kakaa.

Kauasiani, sworn, says he knows the land claimed by Kakaa in Puheemiki. It consists of 7 kalo patches in two pieces. The first piece of 5 patches, is bounded on the Kaunala side by the Kouohiki, - Makai by the land of Kaamooama, - on Punaluu side by the line of Waiono, - Mauka by a watercourse.

The second piece of 2 patches is bounded Mauka by Polani's land, - on all the other sides by the Kouohiki.

Claimant has also a piece of cultivated Kula land, - bounded Mauka by a pali, - on Kaunala side and Makai by the Kouohiki, - on Punaluu side by the land of witness.

Claimant has a House Lot also, near the sea beach. It is bounded Makai by a stone wall, but not enclosed. There is one house on it. Claimant has lived there for about 17 years.

Makauloheau, sworn, says she knows the land of Kakaa. There are 7 kalo patches and a piece of Kula land, and a House Lot as set forth by the last witness.

Claimant is the Agent of the Kouohiki.

Claim 4350. Kauloalani.

Hakaa, sworn, says he knows the land claimed by Kauloalani in Puheemiki. It consists of 3 kalo patches which join, forming one piece. It is bounded Mauka and Makai by the Koushiki, - on Hauula side by Haka-Kana's land, - on Punaluu side by the line of Waiono.

Claimant has a piece of cultivated Kula land also. It is bounded on Punaluu side by the line of Waiono, - Mauka by a pali, - on Hauula side by claimant's land, - Makai by the Koushiki.

Claimant has a House Lot also, near the sea side. It is not fenced in. There is one house on it. Claimant has lived there since the time of Kam: I.

Makauloheau, sworn, says she knows the land of claimant. She confirms in full the testimony of the last witness.

The Koushiki's Agent had no objections to make to this claim.

Claim 4437. Kaiwi. (Deceased)

Kakaa, sworn, says Kaiwi died in 1848, leaving his property to Polani his son. Polani died in 1849, leaving a child whose name is Daniela, for whom the land of Kaiwi is now claimed.

Witness knows the land claimed by Kaiwi in Puheemiki. It consists of seven Kalo patches. They form one piece, bounded Mauka and Hauula side by the Kouhiki, - Makai by a stone wall, - on Punaluu side by Kahakaua's land.

Claimant had a piece of cultivated Kula land also, bounded Mauka by a pali, - on Hauula side by witness' land, - Makai and Punaluu side by the Kouhiki.

Claimant had also a House Lot where his heir now lives. It is bounded Makai by a stone wall, but is not enclosed. There is one house on it. Claimant lived there since the time of Kam: I.

Makaukeloheau, sworn, says she knows the land claimed by Kaiwi. She confirms in full the testimony of the last witness.

The Agent of the Kouhiki had no objections to make to this claim.

Claim 6955. Haamoana.

Makauloheau, sworn, says she knows the land of claimant in Pukeemiki. It consists of 3 kals patches and a piece of cultivated kula land.

The 3 kals patches form one piece, bounded on the Haamula side by Polani's land, - Makai and Mauka by Kakaa's land, - on Punaluu side by the line of Waiono.

The kula land is bounded on Haamula side by Lumisuan's land, - Makai by the Koushiki, - on Punaluu side by Kekihi's land, - Mauka by a pali.

Claimant has a House Lot also, makai of the above. It is enclosed on one side only by a Stone wall. There is one house on it. Claimant has lived there for ten years.

Kaualani, sworn, says he knows the land of claimant. There are 3 kals patches, a piece of kula land and a House Lot, as described by the last witness.

The Koushiki had no objections to make to this claim.

Claim 10771.

Polani

(Deceased)

94

Makaukeloheau, sworn, says she knows the land claimed by Polani in Puheemiki. It consists of six Kale patches, joined together forming one piece, - bounded Mauka by a pali, on Hauula side and Makai by the Honohiki, on Punaluu side by Kaloloha's land.

Claimant has a piece of cultivated kula land also. It is bounded Mauka by a pali, on Hauula side and Makai by the Honohiki, on Punaluu side by Kaulalani's land.

claimant has a House Lot also adjoining Kawai near the sea side. It is bounded Makai by a stone wall, but is not enclosed. There is one house on it. Claimant and his parents lived there since the time of Kam: I. Polani died in 1849, leaving a child called Danisla. The child is now in charge of Kaulalani, who appears for him.

Kakaa, sworn, says he confirms entirely the testimony of the last witness in regard to this claim.

The Agent of the Honohiki had no objections to make to this claim.

Punaluu 10 Sept. 1850.

Claim 3724. Maiahe.

From page 33.

Kakaa, sworn, says he knows the kalo patch claimed by Maiahe in Puheemiki. It is bounded on Kaunala side by the Koushiki, Makai and Mauka by Kaiwi's land, on Punaluu side by Kahakakana's land.

Kauiolani, sworn, confirms the testimony of the last witness. Claimant has held the land for 3 years.

The Agent of the Koushiki had no objections to make to this claim.

Claim 5852. Kalahae.

Lono, sworn, says Kalahae died in 1850, leaving a widow, who subsequently gave up the land to the Koushiki and removed to another place to live.

(This was confirmed by those present, and no person appeared to represent the claim).

Claim 5925.

Puali

(Deceased)

96

Makaia, sworn, says Puali died in 1848, leaving his property to Lono his brother in Law, who now claims this land.

Witness knows the land claimed by Puali in Kapawa. It consists of 4 Kala patches, a piece of cultivated Kula land, and a House Lot.

The 4 Kala patches form two pieces.

The first piece of 2 patches, is bounded Mawka and Hauula side by the Konohiki, Makai by a stream, - on Punaluu side by the Konohiki.

The second piece of 2 patches is bounded on all sides by the Konohiki.

The Kula land is bounded Mawka by a pali, - on Hauula side by Kahawaii's land, Makai by the Konohiki, - on Punaluu side by witness' land.

Claimant's House Lot is near the sea side. It is not enclosed. There is one house on it. Claimant lived on the land from the time of Kam. I.

Kamohoula, sworn, says he knows the land of Puali, - it is the same as described by last witness, whose testimony he confirms.

The Konohiki had no objections to make to this claim.

Claim 7652. Kamohoula.

Moakala, sworn, says he knows the land claimed by Kamohoula in Kapana and Haleaha. It consists of 3 kalo patches, a piece of Kula land and a House Lot in Kapana. The 3 kalo patches form two pieces.

The first piece of 2 patches is bounded Makai by Kuapeu's land, - on Punaluu side by Pualii's land, - Mauka by the Kouohiki, - on Hanuula side by Kahawai's land.

The second piece of one patch, is bounded Mauka and Makai by the Kouohiki, - on Hanuula side by a stream, - on Punaluu side by a watercourse.

The Kula land is bounded Mauka by the pali, - on Hanuula side by Kuapeu's land, - Makai by a road, - on Punaluu side by Ukeke's land. It is cultivated in potatoes.

The House Lot of claimant is near the sea side. It is not enclosed. There is one house on it.

Witness knows the land of claimant in Haleaha. It is a piece of Kula land, bounded on Hanuula side by Kueo's land, - Makai by Kahawai's land, - on Punaluu side by a stream, - Mauka by the pali. It has lived on this land since the war on Kanae.

Lone, sworn, says he knows the lands of alt, - they are as described by the last witness, whose testimony he confirms.

The Kouohiki consented to this claim.

Claim 3752. Ukeke.

Makaira, sworn, says he knows the land claimed by Ukeke in Kapano. It consists of 20 kalo patches, a piece of Kula land and a House Lot.

The kalo land is bounded on Punaluu side by the line of Puheemiki, - Mauka by witness' land, - on Haauula side by Kuapua's land, - Makai by a stream.

The Kula land is bounded Mauka by a pali, - on Haauula side by Kamohoula's land, - Makai by a road, - on Punaluu side by the line of Puheemiki.

Claimant's House Lot is near the sea side. It is bounded Makai by a stone wall. It is not enclosed all round. There are 3 houses on it.

Witness knows the land claimed by Ukeke in Waiono. It consists of 5 kalo patches and a piece of Kula land.

The 5 kalo patches form one piece, bounded Mauka by Puniwaa's land, - on Haauula side by the line of Puheemiki, - Makai by a watercourse, - on Punaluu side by Koo's land.

The Kula land is bounded Makai and Mauka by the Kouohiki, - on Punaluu side by Koo's land, - on Haauula side by a pali.

Kukeawe, sworn, says he knows the piece of land claimed by Ukeke in Punaluu. It is planted with wauke. It is bounded Makai

by Kaunualii's land, - on Kaneohe side
by a watercourse, - Mauka and Kaunua
side by Kaunualii's land.

Moakaa, re examined, says Ukeke has
lived on the land claimed by him for
about twenty years.

Iuapana, sworn, says he knows the lands
claimed by Ukeke and confirms the
testimony of the previous witnesses.

The Konoohiki had no objections to
make to this claim.

Claim 7667. Kahawain.

Makala, sworn, says he knows the land claimed by Kahawain in Kapano. It consists of 3 kalo patches, a piece of Kula land and a House Lot. The Kalo land forms two pieces.

The first piece of 2 patches is bounded Mauka by Pualii's land, - on Hanuula side by the land called Haleaha, - Makai by Kiiapuu's land, - on Punaluu side by the Kouohiki.

The second piece of one patch, is bounded mauka by witness' land, - on Hanuula side by Kamohoula's land, - Makai by Upeke's land, - on Punaluu side by the Kouohiki.

The Kula land is bounded Mauka by a pali, - on Hanuula side by Haleaha, - Makai by the Kouohiki, - on Punaluu side by Pualii's land.

Claimant's House Lot is near the sea side. It is not enclosed. There are two houses on it. Claimant has lived there since before the war on Kawai.

Kamohoula, sworn, says he knows the land of claimant. It is the same as described by last witness, whose testimony he confirms.

The Kouohiki had no objections to make to this claim.

Claim 7685. Kuapuu.

Makala, sworn, says he knows the land claimed by Kuapuu in Kapana. It consists of 2 Kala patches, and a piece of Kula land, cultivated.

The 2 Kala patches form one piece, - bounded Mauka by Kamohoula's land, - on Hauula side by Haleaha, - Makai by Ukeke's land, - on Punaluu side by the same.

The Kula land is bounded Mauka by the Kala land of claimant, - on Hauula side by a road, - Makai by a stream, - on Punaluu side by Ukeke's land.

Claimant's House Lot is in Haleaha. It is not enclosed. There are 2 houses on it. Claimant and his ancestors have lived on the land from the time of Kam. I.

Lono, sworn, says he knows the land of claimant. It is as described by last witness, whose testimony he confirms.

The Kouohiki had no objections to make to this claim.

Claim 5853. Kamano.

Kahuaoketani, sworn, says he knows the land claimed by Kamano in Haleaha. It consists of 6 kalo patches, forming two pieces.

The first piece of 5 patches, is bounded mauka by a pali, - on Hauula side by the land of Kanoana, - Makai by claimant's Kula land, - on Punaluu side by Kueo's land.

The second piece of one patch is bounded mauka by the Kouhiki, - on Hauula side by claimant's Kula land, - Makai by Kahi's land, - on Punaluu side by Kueo's land.

The Kula land is bounded mauka by claimant's Kalo land, - on all the other sides by the Kouhiki.

The claimant's House Lot is near the sea-side. It is enclosed with a wooden fence. There are two houses on it. Claimant and his parents have lived there since the time of Kam. I. The House Lot is bounded mauka by a road, - on Hauula side by a stream, - Makai by the sea beach, - on Punaluu side by the Kula land.

(There was no other person present from the same land, to confirm this testimony, but I presume it is correct).

G. M. R.

Claim 3848. Puuwaawaa (Deceased).

Makaia, sworn, says he knows the land of claimant in Waiau. It consists of six Kalo patches and a piece of Kula land.

The 6 Kalo patches join together forming one piece, - bounded Mauka by Opunui's land, - on Haunala side by the line of Puheemiki, - Makai by Ukeke's land, - on Punaluu side by Kowai's land.

The Kula land is bounded Makai by the Kouohiki, - on Punaluu side by Kealoha's land, - Mauka by Koo's land, - on Haunala side by Kalolohi's land.

Puuwaawaa died in 1848, leaving his property to Ukeke, his adopted father, who now claims this land.

Lopana, sworn, says he knows the land of Puuwaawaa. He confirms in full the testimony of the last witness.

The Agent of the Kouohiki had no objections to this claim.

Claim 8447. Kupau.

Kauaalani, sworn, says he knows the land claimed by Kupau in Puheemiki. It consists of three Kalo patches, a piece of Kula land and a House Lot.

The 3 Kalo patches form one piece bounded on Punaluu side by the line of Waious, - Mauka by Maiahe's land, - on Haunala side by Kaka's land, - Makai by the same.

The Kula land is bounded Mauka by a pali, - on Haunala side by Kaiwi's land, - Makai by a watercourse, - on Punaluu side by Polani's land. The House Lot of claimant is included in this piece.

Kupau has lived there since the time of Kam. I.

The Honolulu's Agent had no objections to make to this claim.

Claim 10,185. Makaiia.

Lono, sworn, says he knows the land claimed by Makaiia in Kapana. It consists of 3 kalo patches and a piece of kula land.

The 3 kalo patches form one piece, bounded makai by the land of Pualii, - on all the other sides by the Kouohiki.

The kula land is bounded mauka by a pali, - on all the other sides by the Kouohiki. It is cultivated.

Claimant's House Lot adjoins that of Ukeke. It is not enclosed. Makaiia has lived on this land for three years.

Ukeke, sworn, says he knows the land of Makaiia. It consists of 3 patches of kalo and a piece of kula land, as described by the last witness, whose testimony he confirms.

The Kouohiki had no objections to offer to this claim.

Punaluu 11th Sept. 1850.

103

Claim 4707. Moa.

Kashae, sworn, says he knows the land claimed by Moa in Kaluanui. It consists of nine Kalo patches and a piece of Kula land.

The 9 Kalo patches form two pieces.

The first piece contains 5 patches. It is bounded Mauka by a road, - on Haunala side by Kapela's land, - Makai by a stream, - on Punaluu side by Kaumielele's land.

The second piece of 4 patches is bounded Mauka by Moanui's land, - on Haunala side by Kapela's land, - Makai by a stream, - on Punaluu side by Kaumielele's land.

The Kula land is bounded Mauka by a pali, - on Haunala side by Kaumielele's land, - Makai by claimant's Kalo land, - on Punaluu side by Hoalii's land. The House Lot of claimant is included in this piece. Claimant has lived there five years.

Kamaala, sworn, says he knows the land of claimant. It consists of 9 Kalo patches and a piece of cultivated Kula land as described by the last witness, whose testimony he confirms.

Hanakauluna, The Agent of the Honohiki had no objections to make to this claim.

Claim 10,848. Paaoas. (Deceased)

Kamaala, sworn, says Paaoas died in 1849, leaving all his property to his brother Kapela.

Witness knows the land claimed by Paaoas in Kahuamui. It consists of one kalo patch and a piece of kula land, cultivated.

The kalo patch is bounded Mauka by Kasha's land, - on Hanuula side by Kalaupalau's land, - Makai by Koloa-keas's land, - on Punaluu side by Kapela's land.

Pakee, sworn, says he knows the land of claimant. It consists of one kalo patch and a piece of kula land, cultivated, as described by last witness, whose testimony he confirms.

Nanakauluna, Agent of the Kouhiki, had no objections to make to this claim.

Claim 8164 F. Kamaala.

Kamaala, sworn, says his claim was drawn up by Kaiwi in 1848, who promised to carry it to the Land Commission. (It is not in the file and is supposed to have been lost).

Kaehae, sworn, says he knows the land claimed by Kamaala in Kaluanui. It consists of 4 kals patches and a piece of cultivated kula land.

The 4 kals patches form two pieces.

The first piece of 2 patches is bounded mauka by the land of Lohilohi, - on Hanuula side by Kaehae's land, - makai by the Konoheiki, - on Punaluu side by Pakeo's land.

The second piece of 2 patches, is bounded mauka by the Konoheiki, - on Hanuula side by Kai's land, - makai by claimant's House Lot, - on Punaluu side by Pakeo's land.

The kula land is bounded, mauka by a pali, - on all the other sides by Hanakauluna's land.

Claimant's House Lot is makai of his kals land. It is not enclosed. There is one house on it. Claimant has lived there for 10 years.

Lioni, sworn, says he knows the land of Kamaala. It consists of 4 kals patches.

The kula land he does not know about. He knows the house site, - it is not enclosed.

Kahanakauluna, Agent of the Konoheiki, had no objections to make to this claim.

Claim 8164 G. Kaiwe.

Kaiwe, sworn, says his claim was drawn up by Kaiwi in 1848, who promised to carry it to the Land Commission.

(It is not to be found in the files.)

Kapela, sworn, says he knows the land claimed by Kaiwe in Kaluanui. It consists of 3 Kalo patches and a piece of cultivated Kula land.

The 3 Kalo patches form one piece, bounded Mauka by the claimant's Kula land, - on Hanuula side by Moewa's land, - Makai by Kapela's land, - on Punaluu side by Koloakea's land.

The Kula land is bounded Mauka by a pali, - on Hanuula side by Kapela's land, - Makai by claimant's Kalo land, - on Punaluu side by Moanui's land.

Claimant's House site is makai of his land. It is not enclosed. There is one house on it. Claimant has lived there with his parents for a long time.

Luhiluhii, sworn, says he knows the land of Kaiwe. It consists of 3 Kalo patches and a piece of Kula land, as described by last witness, whose testimony he confirms.

Kahanakauluna, Agent of the Kono-
hiki, had no objections to make to this claim.

Claim 8164 H. Lihiluhii.

Claimant, being sworn, deposed that Kawi drew up his claim in 1848.

Lioni, sworn, says he carried Lihiluhii's claim to Kale Kawila along with several others.

Witness knows the land claimed by Lihiluhii in Kaluanui. It consists of 6 Kalo patches and a piece of Kula land. The 6 Kalo patches form 2 pieces. The first piece of 5 patches is bounded Mauka by claimant's Kula land, - on Hauula side by Lioni's land, - Makai by the Honohiki, - on Punaluu side by Kapela's and Kaumielele's lands.

The second piece of one patch is bounded all round by the Honohiki's land.

The Kula land is bounded Mauka by a pali, - on Hauula side by Lioni's land, - Makai by claimant's Kalo land, - on Punaluu side by Kaiwe's land.

Claimant's House Lot is makai of his land. It is not properly enclosed. There is one house on it. Claimant has lived there all his life, - he derived the land from his parents.

Kapela, sworn, says he knows Lihiluhii's land. It consists of 6 Kalo patches and a piece of Kula land, and a House site, as described by the last witness, whose testimony he confirms.

Kahanakaulana, Agent of the Honohiki, had no objections to make to this claim.

Claim 8164 J. Peters.

Claimant, being sworn, says Kaiwi drew up his claim in 1848. Claimant supposed that Kaiwi had carried his claim to the Board.

Keaka, sworn, says he knows the land claimed by Peters in Kaluanui. It consists of six kalo patches and a piece of kula land. The six kalo patches form two pieces.

The first piece, of 5 patches, is bounded mauka by Mosewa's land, - on Hauula side and makai by Keaka's land, - on Punaluu side by Hasha's land.

The second piece, of one patch, is bounded mauka by Keaka's land, - on all the other sides by the same.

The kula land is bounded mauka by the land of Pakeu, - on Hauula side and makai by Keaka's land, - on Punaluu side by Hasha's land. Claimant derived the land from his parents and has lived on it all his life.

Poonui, sworn, says she knows the land of Peters. It consists of 6 kalo patches and a piece of cultivated kula land, as described by the last witness, whose testimony she confirms.

Kahanakauluna, Agent of the Honohiki, had no objections to offer to this claim.

111

Claim ~~244~~ 4055 Kaulakaliu. (Deceased)
Keaka, sworn, deposed that Kaulakaliu's claim was drawn up by Kaiwi in 1848. Witness supposes that Kaiwi carried the claim to the Land Commission along with some others.

Kamaala, sworn, says he knows the land claimed by Kaulakaliu in Kalahele. It consists of 16 kalo patches and a piece of kula land.

The 16 kalo patches form one piece, bounded mauka by Mosewa's land, - on Haunala side by the Kouohiki, - Makai by a stone wall, - on Punaluu side by Aehae's land.

The kula land is bounded mauka by a pali, - on Haunala side by the Kouohiki, - Makai by Mosewa's land, - on Punaluu side by Aehae's land.

Claimant's House site is included in the boundaries of the first piece. There are 4 houses on it. It is not enclosed.

Kaulakaliu died in 1848, leaving his property to Keaka, who now claims the land. Poonui, sworn, says she knows the land of Kaulakaliu. It consists of 16 kalo patches and a piece of cultivated kula land, as described by the last witness, whose testimony she confirms. Claimant lived on the land nine years.

Kahanakauluna, Agent of the Kouohiki, had no objections to make to this claim.

Claim 8164 L. Kalima. (Deceased)

Mosilili, sworn, says that Kalima's claim was drawn up by Kaiwi in 1848. Witness supposes that Kaiwi carried the claim to the Land Commission.

Kaukaha, sworn, says she knows the land claimed by Kalima in Kaluanui. It consists of 5 Kalo patches and a piece of cultivated Kula land.

The 5 Kalo patches form one piece, bounded Mauka by a pali, - on all the other sides by the land of Kalalakou.

The Kula land is bounded Mauka by a pali, - on all the other sides by Lalakoa's land.

Claimant's House Lot is near the sea. It is not enclosed. There is one house on it.

Claimant lived on the land about 20 years. He died in 1848, leaving his property to Mosilili, who now claims this land.

Kaweloapaikoa, sworn, says he knows the land of Kalima. It consists of 5 Kalo patches and a piece of cultivated Kula land, and a House Site, as described by the last witness.

Kahanakauluna, Agent of the Konoiki, had no objections to make to this claim.

Claim 8164 M. Kolikoli.

Kaweloapiteka, sworn, says Kolikoli's claim was drawn up by Kaiwi in 1848. Witness supposes that Kaiwi carried the claim to the Land Commission along with some others.

Anakaleko, sworn, says he knows the land claimed by Kolikoli in Kaluanui. It consists of 5 Kalo patches and a piece of cultivated Kula land.

The 5 Kalo patches are bounded Mauka by Kihinahi's land, - on Kaunala side by Moosilili's land, - Makai and Punaluu side by the Koushiki.

The Kula land is bounded Mauka and Punaluu side by the Koushiki, - on Kaunala side and Makai by Moosilili's land.

Claimant's House Lot is included in the boundaries of the first piece. There is one house on it. Claimant and his parents, from whom he derived, lived there since the time of Kam. I.

Kahanakauluna, Agent of the Koushiki, had no objections to make to this claim.

Kahana 12th Sept. 1850

Claim 3948. Nuki.

Kalimaone, sworn, says he knows the land claimed by Nuki in Kahana. It consists of ten kalo patches and a piece of cultivated kula land, in which is claimant's House site.

The ten kalo patches form one piece, bounded on Kaneshe side by a stream, - Mautka by the land of Poakua, - on Punaluu side and Makai by a pali.

The kula land is bounded on all sides by a pali.

The House site is separate from the land. It is not enclosed. There is one house on it.

Claimant has lived on the land for about 18 years.

Kahae, sworn, says he knows the land of claimant. It consists of a moor of kalo land, bounded as described by last witness. He knows the kula land, - it is cultivated. He confirms the testimony of the last witness.

Kuamos, Agent of the Honohiki, had no objections to make to this claim.

Claim 4653. Kalimaoni.

Puunee, sworn, says he knows the land claimed by Kalimaoni in Kahana. It consists of 4 Kalo patches and a piece of cultivated Kula land.

The four Kalo patches form one piece, - bounded on Kaneohe side by a stream, - Mauka by Puunee's land, - on Punaluu side by a watercourse, - Makai by Keakua's land.

The Kula land is bounded on Kaneohe side by a watercourse, - Mauka by the Houshiki's land, - on Punaluu side by a watercourse, - Makai by Puunee's land.

The House Lot of claimant is separate from the land. It is not enclosed. There is one house on it. Claimant has lived there from his youth. He derived from his parents.

Keakua, sworn, says he knows the land of claimant. It consists of ten Kalo patches, a piece of cultivated Kula land and a House Lot, - He confirms the testimony of the last witness.

Kuamoo, Agent of the Houshiki, had no objections to make to this claim.

Claim 4367. Kekui.

Kaiawahia, sworn, says he knows the land claimed by Kekui in Kahana. It consists of 8 kalo patches and a piece of kula land. The 8 kalo patches form 2 pieces.

The first piece, of 6 patches, is bounded on Kamehoha side by Kiakahi's land, - Mauka by Makukuku's land, - on Punaluu side by Claimant's kula land, - Makai by Kapapa's land.

The second piece of 2 patches is bounded on the Kamehoha side by a stream, - on all the other sides by the Kouohiki.

The kula land is not cultivated. The House Lot of Claimant is in another place. It is not enclosed. There is one house on it. Claimant derived the land from his parents, who had it since the time of Kam. I.

Makukuku, sworn, says he knows the land of Kekui. It consists of 8 kalo patches, one of which is called a fish pond. A part of Claimant's kula land is cultivated with potatoes. It is bounded on Mauka side by the kalo land of Cht, - on Punaluu side by Kuamoo's land, - Makai by Kooliamani's land, - Kamehoha side by Makukuku's land.

Kuamoo, Agent of the Kouohiki, had no objections to make to this claim.

117

Claim 5702. Kikuiholahola.

Karawahia, sworn, says he knows the land claimed by Kikuiholahola in Kahana.

It consists of 11 Kalo patches in one piece, bounded on Kaneohe side by Lani's land, - Maunaloa by Wahi's land, - on Punaluu side by the Kula land, - Makai by the land of Kuamoo.

Claimant's House Lot is in another place. It is not enclosed. There is one house on it. Claimant has lived on the land for over 20 years.

Kalimahu, sworn, says he knows the land of claimant. It consists of 11 Kalo patches as described by last witness.

Claimant's Kula land is only planted with a few scattering Banana trees.

Kuamoo, Agent of the Konoiki, had no objections to make to this claim.

Claim 5231. Kapena.

Kuamoo, sworn, says he knows the land claimed by Kapena in Kahana. It consists of ten Kala patches and a piece of cultivated Kula land. The 10 Kala patches form 2 pieces.

(This land was so much scattered that the Commissioner endeavored to effect an exchange between the Konoheki and claimant so that the land of the latter should be as much in one piece as possible. This has been effected).

The first piece, of 9 patches, is bounded on the Kanohe side by Manu's land, - Mauka by a path, - on Punaluu side by a ditch, - Makai by Keakua's land.

The second piece, of one patch, is bounded on the Kanohe side by Kekui's land, - Mauka by a pali, - on Punaluu side and Makai by Kekui's land.

The Kula land is bounded on Kanohe side by a ditch, - Mauka and Makai by Kuamoo's land, - on Punaluu side by Kalimali's land.

Claimant's House Lot is separate from the above. It is not enclosed. There is one house on it. Claimant has had the land, some for 10 and some for 20 years.

Witness is Agent for the Konoheki and has no objections to make to this claim.

Claim 4433. Kuapuu.

Keakua, decessor, says he knows the land claimed by Kuapuu in Kahana. It consists of 2 Kala patches. The two patches form one piece, bounded on Punaluu side by a watercourse, - Makeni by the Kouohiki's land, - on Kaneohe side by Opa's land, - Manka by Kukuiholahola's land.

Claimant has no House site, - he lives with some one else.

The Kula land claimed by Kuapuu has not been cultivated for a number of years. Claimant and his ancestors have had the land since the time of Kam: I.

Kuamoo, Agent of the Kouohiki, had no objections to make to this claim.

Claim 8185. Hohoiea.

Kapu, sworn, says he knows the land claimed by Hohoiea in Kahana. It consists of 12 kalo patches, 9 of which are cultivated.

The 12 patches form one piece, bounded on the Kaneohe side by a stream, - Mauka and Punaluu side by a pali, - Makai by a pali and Kahu Trees.

The kula land claimed by Hohoiea is not cultivated.

Kapaakea, the Konohiki, consented to this claim.

Claim 9961. Lilihi.

Puenee, sworn, says he knows the land claimed by Lilihi in Kahana. It consists of one kalo patch, bounded on Kaneohe side by the Konohiki, - Mauka by Kaakua's land, - on Punaluu side by Kaopu's land, - Makai by the kula land.

Claimant has lived here since the time of Kam: I.

Keakua, sworn, says he knows the kalo patch of Lilihi. It is bounded as stated by the last witness. The kula land has not been cultivated for several years.

Kuamoo, Agent of the Konohiki, had no objections to this claim.

Claim 4363. Kaopae.

Puahiki, sworn, says he knows the land claimed by Kaopae in Kahana. It consists of 12 Kalo patches and a piece of cultivated Kula land.

The 12 patches form two pieces.

The first piece, of 9 patches, is bounded on the North by a watercourse, - East by the Konohiki, South by a stream, - West by the Kalo land of Kuamoo.

The second piece, of 3 patches, is bounded North by the Konohiki, - East by Kuamoo's land, - South by a stream, - West by Kukuiholahola's land.

The Kula land is bounded on all sides by a watercourse. The House site of claimant is in this piece. It is not fenced in. Claimant has lived on the land 15 years.

Kuamoo, sworn, says he knows the land of Kaopae. It consists of one Inoo of Kalo land, and a piece of Kula land, in which is the House site of claimant.

The Agent of the Konohiki had no objections to make to this claim.

Claim 6067. Kooliliamaue.

Puunee, sworn, says he knows the land claimed by Kooliliamaue in Kahana. It consists of two kalo patches and a House site. The two kalo patches form two pieces.

The first piece of one patch is bounded East by the Kouohiki, - South & West by Mianu's land, - North by Makukuu's land.

The second piece of one patch is bounded North by the House site of Claimant, - East and South by the Kula land, - West by Pine's kalo land.

The House site adjoins the second piece. It is not enclosed. There are two houses on it. Claimant has lived there from the time of Kam: I.

Kalimaone, sworn, says he knows the land of Claimant. It consists of two kalo patches and a House site, as described by last witness, whose testimony he confirms.

Kuamoo, Agent of the Kouohiki, had no objections to make to this claim.

Claim 3946. Muneu.

Kaiakahi, sworn, says he knows the land claimed by Muneu in Kahana. It consists of 11 kalo patches and a piece of kula land.

The 11 patches, forming one piece, is bounded North by a pali, - East by a stream, - South by the claimant's kula land, - West by a water-course.

The kula land is bounded North and West by a pali, - East and South by a stream. The Muneu site of claimant is included in this piece. Claimant has lived on the land for seven years.

Kaliacle, sworn, says he knows the land of Muneu. It consists of 11 kalo patches and a piece of kula land, as described by last witness.

Kuamoo, Agent of the Honohiki, had no objections to make to this claim.

133
Kahana 14th Sept. 1852.

Claim 5319. Kaopuu.

Makia, sworn, says he knows the land claimed by Kaopuu in Kahana. It consists of 10 Kalo patches, which form one piece, bounded on the Kaneohe side by Lilipis' land, - Manka by Kekuahani's land, - on Punaluu side by Opa's land, - Makai by the Kouhiki.

Claimant has a House Lot also. It is not enclosed. There are 2 houses on it.

Claimant derived the land from his parents and has lived on it all his life.

Kapaakea, the Kouhiki, had no objections to make to this claim.

Claim 5321. Kamakalaahia.

Kuamos, sworn, says claimant has left Kahana and gone to reside at Kaneohe.

There is no one lives on his place at present. He left Kahana a year ago.

Kaopuu, sworn, says the land claimed by Kamakalaahia is not cultivated. His house is falling into a state of bad repair.

(No person appeared to represent this claim).

Kapaakea, the Kouhiki, claims this land.

Claim 5221. Kaiakahi.

Munu, sworn, says he knows the land claimed by Kaiakahi in Kahana. It consists of two kalo patches and a piece of kula land where his house is.

The 2 kalo patches form one piece, bounded on the Kaneohe side and Makai by the Kouohiki, - Mauka by Makuku's land, - on Punaluu side by Kekui's land.

The kula land, in which is the House site, is bounded Makai by a stone wall, - on Kaneohe side and Mauka by Pohina's land, - on Punaluu side by a pali.

Claimant has lived there since the time of Kaomi.

Lilipi, sworn, says he knows Kaiakahi's land. It consists of 2 kalo patches and a piece of kula land, in which is the House site, as stated by the last witness.

Kapaakea, the Kouohiki, had no objections to make to this claim.

Claim 5409. Kaulua.

Muhii, sworn, says he knows the land claimed by Kaulua in Kahana. It consists of 6 Kalo patches in one piece, bounded on Kaneohe side by a pali; - Mauka & Makai by a stream; - on Punahoa side by a pali.

Claimant has a House Lot also. It is not enclosed. She derived the land from her parents. Witness does not know the length of occupancy.

Pakukuu, sworn, says he knows the land of claimant. It consists of 6 Kalo patches and a House Lot as stated by last witness.

Kapaakea, the Konohiki, consents to this claim.

Claim 5320. Kapapa.

Kaiawahia, sworn, says he knows the land claimed by Kapapa in Kahana. It consists of one Kalo patch and 2 pieces of Kula land in which is his House site. The whole forms one piece, bounded on Kaneohe side and Mauka by the Konohiki; - on Punahoa side by the pali; - Makai by Pine's land. The House site is included.

Makukuu, sworn, says he knows the land of Kapapa. It consists of 2 pieces of Kula land and one Kalo patch between, as stated by the last witness. Claimant derived the land from his parents.

Kapaakea, the Konohiki, had no objections to make to this claim.

Claim 6122. Napela.

126

Maulua, sworn, says he knows the land claimed by Napela in Kahana. It consists of six Kalo patches and a piece of Kula land and a House site.

The 6 Kalo patches form one piece, bounded on Kaneohe side by a stream; - Mauka by Maulua's land, - on Punaluu side by a watercourse; - Makai by Hoikau's land.

The Kula land is bounded on Kaneohe side by claimant's Kalo land, - Mauka by Keakua's land, - on Punaluu side by Hoikau's land, - Makai by Kuamoo's land.

Claimant has a House site also. It is enclosed with a wooden fence. Claimant derived the land from his parents.

Kalimalie, sworn, says he knows Napela's land. It consists of 6 Kalo patches, a piece of cultivated Kula land, and a House Lot Makai, as stated by last witness.

Kapaakea, the Konoheki, had no objections to make to this claim.

Claim 5339. Palena.

Kalimalu, sworn, says he knows the land claimed by Palena in Kahana. It consists of 7 kalo patches and a piece of cultivated kula land, in which claimant has a house site. The 7 kalo patches form 2 pieces.

The first piece, of 5 patches, is bounded on Kaneohe side and Makai by Kukuiholakola's land, - Mauka by Wahea's land, - on Punaluu side by a watercourse.

The second piece, of 2 patches, is bounded on Kaneohe side and Makai by Kukuiholakola's land, - Mauka by Wahea's land, - on Punaluu side by Palena's land.

The kula land is bounded on Kaneohe side by Palena's land, - Mauka by Wahea's land, - on Punaluu side by a pali, - Makai by Kukuiholakola's land. Claimant has lived there 30 years.

Kapapa, sworn, says he knows the land of claimant. It consists of 7 kalo patches and a piece of cultivated kula land, in which is claimant's house site, as stated by last witness.

Kapaakea, the Kouohiki, had no objections to make to this claim.

Claim 5318. Kamakuku.

Naiawahia, sworn, says he knows the land claimed by Kamakuku in Kahana. It consists of 7 Kalo patches, which form one piece, and a piece of Kula land, in which is claimant's House Lot.

The Kalo land is bounded on Kaneohe side by Hooliliamama's land, - Mauka by Kuamoo's land, - on Punahoa side by Makuku's land, - Makai by Kekui's land.

The Kula land is bounded on Kaneohe side by Claimant's Kalo land, - Mauka by Kukuiholahola's land, - on Punahoa side and Makai by the Kouohiki. Claimant's House site is included in this. He derived the land from his ancestors.

Kapaakea, the Kouohiki, had no objections to make to this claim.

Kahana 18th Sept^r 1852.

Claim 5406. Kuamos.

Makuku, sworn, says he knows part of the land claimed by Kuamos in Kahana. Knows of 2 Kalo patches near the Bridge, but they have not been planted for 8 or 10 years.

Witness knows the House Lot of claimant. It is enclosed. It is on the Road side. Claimant has lived there over 20 years.

Kukuiholahola, sworn, says he knows of 2 Kalo patches of claimant, Mauka of his House Lot. These two patches are in bad order at present, owing to the want of water. They are bounded on Kaneohe side by Makuku's land, - Mauka by Kukuiholahola's land, - on Punaluu side by a watercourse, - Makai by Makuku's land.

Kalimau, sworn, says he knows one Kalo patch belonging to Kuamos. It is bounded on Kaneohe side by Puuneei and Kanaima's lands, - Mauka by Kanaima's land, - on Punaluu side by the Kouhiki, - Makai by Puuneei's land.

Knows one piece of cultivated Keala land claimed by Kuamos. It is bounded on Kaneohe side by a watercourse, - Mauka by Kapela's land, - on Punaluu side by Hoikani's land, - Makai by Kalimalu's and Kapena's lands.

Hua, sworn, says he knows the 3 Kalo patches claimed by Kuamos, Mauka. They are bounded on Kaneohe side by Kapela's land, - Mauka by Kapena's land, - on

Punaluu, side by Kaluaai's land, - Makai by the Kouohiki.

Maiawahia, Swain, says he knows the other piece of cultivated Kula land claimed by Kuamoo. It is bounded on Kaneohe side by Kekui's land, - Makai by Kekui's and the Kouohiki, - on Punaluu side by the Kouohiki, - Makai by Kapapa's land.

Witsep knows the River claimed by Kuamoo. It comes from some springs about a mile from the sea, into which it empties near claimant's house.

(Claimant stated that Pule, a former Kouohiki, gave this River to him some 12 years ago. The land on both sides of it belongs chiefly to the Kouohiki).

(The Commissioner, G. M. Robertson, was of opinion that this claim for a river could not be sustained).

Kapaakea, the Kouohiki, had no objections to make to this claim, except to the river.

Claim 6069. Haumu.

Kaakua, sworn, says Haumu died in 1848, leaving neither widow nor child.

His land came back to the Kouohiki who has placed some one else on it since to work it for him.

(This was confirmed by those present and no person appeared to represent this claim.)

Kapaakea, the Kouohiki, claimed the land as his.

Claim 10,555. Ohekaui.

Kaiaowai, sworn, says he knows the land claimed by Ohekaui in Kahana. It consists of 4 Kalo patches, bounded on Kameohe side by the Kouohiki, - Mauka by Kapela's land, - on Punaluu side by a watercourse, - on Makai side by Wahea's land.

Claimant has a piece of cultivated Kula land also adjoining the Kalo patches. It is planted with several things.

The House Lot is in another place. It is bounded on one side by the Hog wall. There is one house on it.

Claimant has held the land for ten years.

Kapaakea, the Kouohiki, had no objections to make to this claim.

Claim 5807. Kaiaiwahia

Hua, sworn, says he knows the land claimed by Kaiaiwahia in Kahana. It consists of 9 Kalo patches, and a piece of cultivated Kula land near John's house.

The 9 Kalo patches and the Kula land are in one piece bounded Makai by Hua's land, on all the other sides by the Kouohiki.

Makuku, sworn, says he knows the other piece of Kula land claimed by Kaiaiwahia - it is planted in potatoes. It is bounded Makai by Kaiakahi's land, on Kaneohe side by Pine's land, - Mauka by Kapapa's land, - on Punahoa side by the Kouohiki.

Claimant's House Lot is in another place. It is enclosed with a wooden fence. There are 2 houses on it. Claimant derived the land from his ancestors. Witness does not know the length of occupancy.

Kapaakea, the Kouohiki, had no objections to make to this Claim.

Claim 6043. Kiōhi.

Makia, sworn, says he knows the land claimed by Kiōhi in Kahana. It consists of 4 Kalo patches and a House site.

The 4 Kalo patches form one piece, bounded on Kāneōhe side and Punaluu side by the Kouohiki, - Mauka by Matakalahia's land, Makai by Kaopuu's land.

Claimant's House site is Makai. It is enclosed with a stone wall. It is on the opposite side of the stream from Kuamasi's house. There is one house on it. Clt has lived on the land since the time of Kamehameha I.

Kapaakea, the Kouohiki, had no objections to make to this claim.

Claim 5413. Ula.

Peakea, sworn, says he knows the land claimed by Ula in Kahana. It consists of 7 Kalo patches, forming one piece, bounded Mauka by a Stream, - on all the other sides by a pali.

Claimant has also a piece of Kula land, not cultivated. His House Lot is in the Kula land. It is not enclosed. Ula derived the land from his parents.

Kahae, sworn, says he knows Ula's land. It consists of 7 Kalo patches and a House site, as stated by the last witness.

Kapaakea, the Kouohiki, consented to this claim.

Claim 8164 St. Puunee.

Claimant, being sworn, deposed that his claim was drawn up by Kalili in 1848, and he supposes that Kalili carried the claim to the Land Commission along with some others.

Kalimaoni, sworn, says he knows the land claimed by Puunee in Kahana. It consists of 14 Kalo patches, planted, forming 4 pieces.

The first piece, of 2 patches, is bounded on Kaneohe side and Mauka by the Kouohiki; - on Punaluu side by Kanaima's land; Makai by Kula land.

The second piece, of one patch, is bounded on Kaneohe side by a stream; - Mauka by Kanaima's land; - on Punaluu side by Kuameo's land; Makai by a pali.

The third piece, of 7 patches, is bounded on Kaneohe side by the nabelohela; - Mauka by Keakua's land; - on Punaluu side by a water-course; - Makai by Kalimaoni's land.

The fourth piece, of 4 patches, is bounded on Kaneohe side by claimant's Kula land; - Mauka and Makai by a pali; - on Punaluu side by the Kouohiki.

Claimant's Kula land joins the 4th piece of Kalo land on the Kaneohe side. It is planted with wauke, oranges &c &c.

The House Lot is Makai of the land. It is not enclosed. There are two houses on it.

Kapaakea, the Kouohiki, had no objections to make to this claim.

Claim 5941. Pine.

Kaiakahi, sworn, says he knows the land claimed by Pine in Kahana. It consists of 2 kalo patches in one piece, and a piece of kula.

The kalo land is bounded on Kanohe side and Makai by Hooliliamaui's land; - Mauka by Kapapa's land; - on Punaluu side by a pali.

The kula land is bounded Makai and Kanohe side by Hooliliamaui's land; - Mauka by Kapapa's land; - on Punaluu side by Kapena's land.

Claimant derived the land from his parents.

Kapaakea, the Konohiki, had no objections to make to this claim.

Claim 6125. Naho.

Kuamoo, sworn, says Naho has left Kahana and gone to another part of the Island to live. He gave up his land in Kahana to the Konohiki's Agent.

(This was confirmed by several others and no person appeared to represent the claim).

Claim 8164 O. Keakua.

Claimant, being sworn, deposed that his claim was drawn up before by Kalili, by whom he supposes it was carried to the Land Commission.

Kalimaoni, sworn, says he knows the land claimed by Keakua in Kahana. It consists of 9 Kalo patches and a piece of cultivated Kula land. The 9 Kalo patches form 2 pieces.

The first piece, of 6 patches, is bounded on Kaneohe side by a stream, - Mauka by the Honohiki, - on Punaluu side by Kula land, - Makai by Kapela's land.

The second piece, of 3 patches, is bounded on Kaneohe side by the Honohiki, - Mauka by Kapena's land, - on Punaluu side by a watercourse, - Makai by Purness's land.

The Kula land is bounded on Kaneohe side by claimant's Kalo land, - Mauka by Hanaina's land, - on Punaluu side by a pali, - Makai by Kapela's land. It is planted with wauke, bananas & beans.

Claimant derived the land from his parents. Kapaka, the Honohiki, had no objections to make to this claim.

Claim 10978. Waikea.

Kukuiholahola, sworn, says he knows the land claimed by Waikea in Kahana. It consists of 7 kalo patches, a piece of cultivated kula land, and a House Lot.

The 7 kalo patches form one piece, bounded on the Kaneohe side and Makai by Paleua's land, - Mauka by Hoikau's land, - on Punaluu side by a watercourse.

The kula land is bounded on Kaneohe side and Makai by Paleua's land, - Mauka by Hoikau's land, - on Punaluu side by the Kouohiki.

The House Lot is in another place. There is one house on it. It is not enclosed. Claimant has held the land for about 10 years.

Kapaakea, the Kouohiki, had no objections to make to this claim.

Claim 7651. Kalaaupina.

Kapee, sworn, says he knows the land claimed by Kalaaupina in Kahana. It consists of two pieces of kalo land.

The first piece, of 4 patches, is bounded on Kaneohe side by the sea beach, - Mauka by claimant's kula land, - on Punaluu side and Makai by the Kouohiki.

The second piece, of 4 patches, is bounded on the Kaneohe side by Makia's land, - on all the other sides by the Kouohiki.

The kula land is bounded on all sides by the Kouohiki. Claimant derived the land from his parents.

Kapaakea, the Kouohiki, consented to this claim.

Claim 8164 P. Hea.

Claimant, being sworn, deposed that his claim was drawn up by Kaiwika in 1848. He supposes it was carried to the Land Commission by Kaiwika. Kalauana, sworn, says he knows the land claimed by Hea in Kahana. It consists of 25 kalo patches, which form 2 pieces.

The first piece, of 10 patches, is bounded on Kameohe side by the Kula land, - Mauka by Kalauana's land, - on Punaluu side by Keapuni's land, - Makai by the Konohiki.

The second piece, of 15 patches, is bounded on Kameohe side and Mauka by a stream, - on Punaluu side and Makai by Kalauana's land.

The piece of Kula land, in which is the House site, is bounded Mauka by Kahae's land, - on all the other sides by a stream.

Claimant has held this land for 18 years.

John Halborn, sworn, says he knows the land of Claimant. It consists of 25 kalo patches, in 2 pieces, and a piece of Kula land in which is Claimant's House site, as described by the last witness, whose testimony he confirms. The Kula land is planted in spots.

Kakulimoku, sworn, says he knows the Kula land claimed by Hea, adjoining his house. It is not well cultivated. There may be half an acre in cultivation.

Kapaakea, the Konohiki, had no objections to make to this claim, except in regard to the Kula land.

Claim 5704. Kuais.

Kapena, sworn, says he knows the land claimed by Kuais in Kahana. It consists of 5 Kalo patches and a House Lot.

The 5 Kalo patches form one piece, bounded Ma-kai by Kapena's land, - on all the other sides by the Honohiki.

The Kula land claimed by Kuais has not been cultivated for several years.

Claimant's house lot is in another place. It is not enclosed. It has been forsaken by claimant since the death of his wife last year. Claimant has held the Kalo land for 5 years.

Kalimaoni, sworn, says he knows the 5 Kalo patches as stated by last witness, whose testimony he confirms. Claimant has no House Lot. He lives in another man's house. He has no cultivated Kula land.

Kapaakea, the Honohiki, had no objections to make to this claim.

Claim 5708. Kapua.

Kamakuku, sworn, says he knows the land claimed by Kapua in Kahana. It consists of 3 Kalo patches, which form one piece, - bounded on all sides by the Honohiki.

The Kula land has not been cultivated for some years. Claimant has held his land for about 10 years.

Keakua, sworn, says he knows the Kalo land of Kapua. It consists of 3 patches as stated by last witness. Claimant has no House Lot.

Kapaakea, the Honohiki, had no objections to make to this claim.

Claim 5976. Maunui.

Karaowai, sworn, says Maunui died in 1849, leaving his property to his wife who now claims the land.

Witness knows the land claimed by Maunui in Kahana. It consists of 2 kalo patches, planted, and a piece of cultivated kula land in which is the House site.

The 2 kalo patches form one piece, bounded on Kaneohe side by Laau's land,- Mauka by a stream,- on Punaluu side by Wahea's land,- Makai by the Honohiki.

The kula land is bounded on Kaneohe side by the kalo land,- Mauka by a path,- on Punaluu side and Makai by a stream. The House site is included in this. Claimant has held the land for 20 years.

Kuamoo, sworn, says he knows the land of Maunui. It consists of 2 kalo patches and a piece of cultivated kula land, in which is the House site.

Claimant has another piece of cultivated kula land in another place. It is planted with wauke, bananas, beans &c. It is bounded on Kaneohe side by a watercourse,- Mauka by Kuamoo's land,- on Punaluu side by Kalima-lu's land,- Makai by Laau's land. Supposed to contain about an acre.

Kapaaked, the Honohiki, had no objections to make to this claim.

Hauula 20th Sept. 1850

Claim 10780. Puua.

Nave, sworn, says he knows the land of Puua in Kapaka. It consists of three kals patches and a House site.

The 3 patches form one piece, bounded on the Punahuu side by Kamana's land, - mauka by the Honohiki, - on Hauula side by Kalukunani's land, - Makai by Nave's kals land.

The House Lot of claimant is near the sea side. It is not enclosed. Claimant and his parents have held this land for over 20 years.

Paeheva, Agent of the Honohiki, had no objections to make to this claim.

Claim 8583. Kukeana.

Ohule, sworn, says he knows the land claimed by Kukeana in Kapaka. It consists of four kalo patches fully planted, and 5 patches uncultivated for the last 2 years. The 4 patches form 2 pieces.

The House Lot of Claimant is separate from the land. It is not enclosed. The Pa Puua is on one side of it. Claimant has lived on the land for 3 years.

Pakewa, Agent of the Kouohiki, sworn, says the land claimed by Kukeana belongs to the Kouohiki. Kukeana was merely placed upon it to care of it, as a sort of under Luma. The kalo and fish have always belonged to Kanaina, the Kouohiki.

(Claimant, in person confirmed this statement. The patches have been chiefly cultivated by the poalima labor of the Kouohiki.)

The Agent of the Kouohiki made no objections to the claim for a House Lot.

Claim 4355. Kairuaia. (Deceased)

Kaahu, sworn, says he knows the land claimed by Kairuaia in Kapaka. It consists of 6 kals patches in one piece, and a House Lot. The kula land is not cultivated.

The 6 kals patches are bounded on Punaluu side by Kaimui's land, - Mauka by the Honohiki, - on Haunala side by Kulu's land, - Makai by Kula land.

The House Lot is Makai. It is not enclosed. The Pa Puaa is makai of it. There is one house on it. Claimant has held the land for at least 10 years.

Kiikau, sworn, says he knows the land of Kairuaia. It is as set forth by the last witness, whose testimony he confirms.

Pachewa, Agent of the Honohiki, had no objections to make to this claim.

Claim 10,804. Nakuina.

Kiikau, sworn, says he knows the land claimed by Nakuina in Kapaka. It consists of 3 kals patches in one piece, and a piece of uncultivated kula land, and a House Site.

The 3 kals patches are bounded on Punaluu side by Kula land, - Mauka by Puaa's land, - on Haunala side by Kaula's land, - Makai by Kula land.

The kula land claimed is not cultivated

nor has it been since Claimant's death.

The House Lot of Claimant is Makai. It is not enclosed. There is one house on it. Claimant died in 1848, leaving his property to his widow and son in Law. Claimant lived a long time on the place, witness does not know how long.

Pachewa, Agent of the Honohiki, had no objections to make to this claim.

Claim 8343. Kalaauiki. (Deceased)

Maikai, sworn, says he knows the land claimed by Kalaauiki in Kapaka. It consists of 11 kalo patches, forming one piece, bounded on Punaluu side by a stream, - Maika by the Konohiki, - on Hanuula side by Kalakuramua's land, - Maikai by Kii-kau's land.

Claimant has also a piece of cultivated kula land. It is full of water melons at present. It is bounded on Punaluu side by a stream, - Maika by the Konohiki, - on Hanuula side by claimant's kalo land, - Maika Maikai by Kii-kau's land.

Claimant's House Lot is in a separate place. It is not enclosed. There is one house on it. Claimant lived there over 20 years. Kalaauiki, died in 1848, leaving his property to his son in Law, Kave, who now claims the land.

Kave, sworn, says he knows the land of claimant. It is as set forth by the last witness, whose testimony he fully confirms.

Pachewa, Agent of the Konohiki, had no objections to make to this claim.

Claim 2001. Moke.

Claimant, being sworn, deposed that he gave up the land claimed by him in Makaa, two years ago. The Konohiki has since given the occupancy of the land to some one else. The land was forfeited by claimant under the laws then existing.

Pachewa, sworn, confirms the claimant's statement.

Claim 4014. Hueu. (Deceased)

Kaopa, sworn, says he knows the land claimed by Hueu in Kapaka. It consists of 6 Kalo patches in one piece, and a piece of cultivated Kula land, also a House Lot in Makas.

The 6 Kalo patches are bounded on the Punaluu side by Makaino's land,- Mauka by the Kula land,- on Hauula side by the Konohiki,- Makai by Kaupai's land.

The Kula land is bounded on the Punaluu side by Makaino's land,- on all the other sides by the Konohiki.

The House Lot is in Makas. It is not enclosed. There is one house on it. Claimant lived on this place for over ten years.

Hueu died in 1848, leaving his property to his brother, Pohule, who now claims the land.

Kane, sworn, says he knows the land of claimant. It is as set forth by the last witness, whose testimony he confirms.

Puehewa, Agent of the Konohiki, had no objections to make to this claim.

Claim 3944. Nakapalau.

Hoole, sworn, says he knows the land claimed by Nakapalau in Makas. It consists of six Kalo patches, a piece of cultivated Kula land, and a House site. The 6 Kalo patches form

one piece, bounded on Punaluu side by Kalakeo's land,- Mauka by the Konohiki,- on Hauula side by Kausalani's land,- Makai by Komoawa's land.

The Kula land is bounded on Punaluu side by Kalakeo's land,- Mauka and Hauula side by the Konohiki,- Makai by Komoawa's land.

The House Lot of Claimant is makai.
It is not enclosed. There are 2 houses on
it. Claimant has held the land for 25
years.

Pakewa, Agent of the Konoiki, had no
objections to make to this claim.

Claim 8592. Kikau.

Puheana, sworn, says he knows the land claimed by Kikau in Kapaka. It consists of 6 kals patches, a piece of cultivated kula land and a House Lot.

The 6 kals patches form one piece, bounded on Punaluu side by the Konohiki, - Mauka by Clio's kula land, - on Hauula side by Makaino's land, - Makai by Makapalaui's land.

The kula land is bounded on Hauula side by Makaino's land, - Makai by Clio's kals land, - on Punaluu side and Mauka by the Konohiki.

The House Lot is in another place. It is not enclosed. There are 2 houses on it. Claimant has held the land for over 20 years.

Paeheua, Agent of the Konohiki, had no objections to make to this Claim.

Claim 2056. Kaume.

Claimant, in person, appeared and stated that the land claimed by him in Makas was the Konohiki's poalima land, and that he (claimant) gave it up to the Konohiki in 1848. Claimant gave it up of his own accord. The Konohiki has since placed some one else on it.

Claim 3876. Pohule.

Pachewa, sworn, says Pohule gave up his land in Makas to the Honohiki last year, of his own free will. He lives now on another land adjoining.

(This was confirmed by all present, and no one appeared to represent the claim.)

Claim 4057. Kaapa.

Kane, sworn, says he knows the land claimed by Kaapa in Makas. It consists of 4 kalo patches, all planted, and a House site.

The 4 kalo patches are in one piece, bounded on Punaluu side by Poonui's land, - Mauka by Kahunahana's land, - on Haunui side by Kai's land, - Makai by Kane's land.

Claimant's House Lot is near the sea. It is not enclosed. The Pa Puua is on the makai side of it. Claimant has lived there over ten years.

Pachewa, Agent of the Honohiki, had no objections to make to this claim.

Claim 3720. Makaino.

Claimant, in person, states that he had only two kaka patches in Makas, which constituted his claim, and that he gave them up to the Konohiki about two years ago, of his own free will. He lives now on an adjoining land. He makes no claim to the above.

Claim 4351. Kalahao.

Kuheana, sworn, says he knows the land claimed by Kalahao in Makas. It consists of two kaka patches, a piece of cultivated kula land and a House site. The 2 kaka patches are bounded on the East and South by the Konohiki, - West by Sakapalau's land, - North by Kiki's land.

The kula land is bounded on Punaluu side and Makai by the Konohiki, - Mauka by a pali, - on Haunala side by Kimo's land.

The House Lot is near the sea side. It is not enclosed. Claimant has held the land since 1847.

Paheua, Agent of the Konohiki, had no objections to make to this claim.

Claim 4434. Kane.

Kaapa, sworn, says he knows the land claimed by Kane in Makas. It consists of 3 kalo patches, a piece of cultivated kula land and a House Lot.

The 3 kalo patches form one piece, bounded mauka by Kaapa's land, - on all the other sides by the Konohiki.

The kula land is bounded on Hauula side by the Konohiki, - on all the other sides by Kamoawa's land.

The House Lot is near the sea beach. It adjoins Kaapa's House Lot. It is not enclosed. Claimant has lived there over ten years.

Paehewa, Agent of the Konohiki, had no objections to make to this claim.

Claim 10,820. Paele.

Wale, sworn, says he knows the land claimed by Paele in Makas. It consists of 5 kalo patches, a piece of cultivated kula land and a House site.

The 5 kalo patches form one piece, bounded on Punaluu side by Makapala's land, - mauka by Kawoalan's land, - on Hauula side by claimant's kula land, - Makai by the Konohiki.

The kula land is bounded mauka by Kawoalan's land, - on Hauula side by the line of Hauula, - Makai by the Konohiki, - on Punaluu side by claimant's kalo land.

Claimant's House Lot is near the sea side.
There is one house on it. It is not enclosed.
Claimant derived the land from his father.
Pachewa, Agent of the Konohiki, had no ob-
jections to make to this claim.

148
Kahuku 24th Sept. 1850.

Claim 4374. Kuapuu.

Miiau, sworn, says he knows the Kalo land claimed by Kuapuu in Kahuku. It consists of 17 patches, 8 of which are planted. The other 9 have not been planted for six months.

Nahuna, sworn, says he knows claimant's Kalo land. There are 8 patches planted and 9 nakelehele. These 9 have not been cultivated for over a year.

The 8 planted patches are bounded on Kaunala side by Miiau's land, - Maunaka by Nahuna's land, - Waialua side by Kai Kai's land, - Makai by the Kouhiki.

Claimant's House site is in another place. It is not enclosed. Claimant has held the land over 10 years.

The Kouhiki consented to the 8 Kalo patches and House site.

Claim 3870. Pua.

149

Kuhapa, sworn, says he knows the land claimed by Pua in Malaekahana and in Laie. The land in Malaekahana is nakelekele. It has not been planted for 4 months on account of the cattle running on the land. It was about half an acre. It was planted with potatoes, bananas &c. He has not gone to the labor days of the Konohiki of Malaekahana for a year.

This piece of kula is bounded on Hamula side by Kahalelaani's land, - Mauka by Kawanui's land, - on Waialua side by the Konohiki, - Makai by Kuhapa's land.

The land claimed in Laie has not been planted for 2 years. Claimant has held the land in Malaekahana for 20 years.

Mr. Hopkins, Konohiki of Malaekahana, objected to this claim because Clt has not gone to the labor days for a year, which he considers to be a renouncing of his land. Clt has gone in the meantime to the poalima.

Claim 8537. Kahawai (Deceased)

Kuhapa, sworn, says he knows the land claimed by Kahawai in Malaekahana. Part of it is planted with wauke. This part is bounded on all sides by the Konohiki's land.

The House site of claimant is not enclosed. Claimant held the land from his youth. He died last April (1850). His wife is his heir.

Paakahi, sworn, says he knows the 3 kalo patches claimed by Kahawai in Laie. The Konohiki took this land away because claimant did not go to the poalima.

The Konohiki of Malaekahana consented to this claim.

Kahuku 25th Sept. 1850.

Claim 7727. Paukoa. (Deceased)

Kuhapa, sworn, says he knows the land claimed by Paukoa in Malaekahana. Part of it has been given up to the Konoehiki by claimant's widow. The portion retained by her is planted with wauke. It is bounded on Hanuula side by Kahoowaha's land, - Mauka by Kuhapa's land, - Waialua side by Kamaui's land, - Makai by Hawaii's land. Paukoa died in the present year.

Paakahi, sworn, says the land claimed by Paukoa in Laie, has not been cultivated for several years. It has reverted to the Konoehiki.

The Konoehiki of Malaekahana consented to this claim.

Claim 8355. Kakaau.

Kuhapa, sworn, says he knows the land claimed by Kakaau in Malaekahana + Laie. The land in Malaekahana is not cultivated. Part of it was planted last year with bananas, wauke &c. It might have been half an acre. This part is bounded on Hanuula side by Kahawahi's land, - Mauka by Kamalii's land, - Waialua side by Kahoowaha's land, - Makai by Kahoowaha's. Witness knows the 2 Kale patches of claimant in Laie. The two patches form one piece, bounded on Hanuula side by Keas's land, - Mauka by Kahuaialua's land, - Waialua side by Koula's land, - Makai by Kealua's land. Claimant has a house site also in Malaekahana, Makai of the land. It is not enclosed.

Claimant has occupied these lands since the time of Kam: I.

The Konoehiki consented to this claim.

Claim 3958. Naulukao.

Kahikapu, sworn, says he knows the land claimed by Naulukao in Kahuku. It consists of 11 Kalo patches, 3 of which are nakelehele. The 8 kalo patches in good order, form one piece, bounded on Waialua side by Pakui's land, - on all the other sides by the Kouohiki. The greater part of the keula land claimed is uncultivated. There is one patch of keula at present planted with wauke. It is bounded on all sides by the Kouohiki.

Claimant's House site is in Kahuku, but it is distinct from the land. It is not enclosed. Claimant derived the land from his parents and has held it about 30 years.

The Kouohiki consented to this claim.

Claim 3432. Pukawale.

Naulukau, sworn, says he knows the land claimed by Pukawale in Kahuku. It consists of 7 Kalo patches in two pieces. The first piece of 5 patches, is bounded Makai by Makakiekie's land, - on all other sides by the Kouohiki.

The second piece, of 2 patches, is bounded on Haunala side by Luiki's land, - on all other sides by the Kouohiki.

The keula land claimed in Kahuku is nakelehele. Claimant's House site is in Kahuku. It is enclosed with a stone wall. Claimant has held the land 18 years.

(Claimant stated that he claims no land in either Malaekahana or Keana, - he gave them up some time ago).

The Kouohiki consented to this claim.

Claim 2870. Kai.

Kahikapu, sworn, says he knows the land claimed by Kai in Kahuku. It consists of ten kalo

patches, none of which are cultivated.

(Claimant appeared in person, and stated that he wished to give up these 10 patches to the Honohiki, because the land is not good for Kalo, and take instead 4 patches in another place, to which the Honohiki consented.

These 4 patches form one piece, bounded on Hauula side by Luiki's land, - on all the other sides by the Honohiki.

The Kula land claimed is not cultivated. Claimant's House site is distinct from his land. It is not enclosed.

The Honohiki consented to this claim.

Claim 4428. Kuhuopohopoho.

Kula, sworn, says he knows the land of Claimant in Kahuku. It consists of 6 kalo patches, 3 of which have not been planted for over a year. The three cultivated patches form one piece, bounded on Kaula side by Kai's land, - Mauka by the Honohiki, - on Waialua side by Kula's land, - Makai by Makilo's land. Claimant has held the land for about five years.

The Honohiki consented to this claim.

Claim 2890. Kaika.

Oea, sworn, says he knows the land claimed by Kaika in Kahuku. It consists of 4 kalo patches, none of which are cultivated. They have not been planted for a year. Claimant has given up the cultivation of these patches. The Kula land claimed is not cultivated. Claimant lives on another land.

The Honohiki claimed this land on account of its being left uncultivated.

Claim 4383. Kula.

Kuhuopohopoho, sworn, says he knows the land claimed by Kula in Kahuku. It consists of 7 kalo patches, only 3 of which are planted, on account of claimant's sickness.

The 7 patches form one piece, bounded on Hanuula side by Witnefi's land, - Mauka by the Honohiki, - Waialua side by Kapeo's land, - Makai by Kaunihauwale's land, -

The Kula land claimed is uncultivated. Claimant has held the Kalo land for 9 years.

The Honohiki had no objections to this claim.

Claim. 2868. Kapaiiaala.

Kailiuku, sworn, says he knows the land claimed by Kapaiiaala in Kahuku. It consists of 5 Kale patches in one piece, bounded on Hanuula side by Paiea's land, - Mauka by Kailiuku's land, - on Waialua side and Makai by the Honohiki.

The kula land has not been planted for years. The House site of claimant is distant from his land. It is not enclosed. Claimant has held the land for 20 years or more.

The Honohiki consented to this claim.

Claim 2861. Kaohela.

Kailiuku, sworn, says he knows the land claimed by Kaohela in Kahuku. It consists of 5 Kale patches, in one piece, bounded on Hanuula side by the Honohiki, - Mauka and Waialua side by kula land, - Makai by Makoli's land.

The kula land claimed has not been cultivated for some time. Claimant has held the Kale land for over 20 years.

Kainane, the brother of claimant, who appeared for him, stated that claimant has no land now in Ulupihupahu or Punalou.

Kailiuku, re-examined, says claimant's House site is near his Kale patches. It is not properly enclosed.

The Honohiki consented to this claim.

Claim 2872. Kaihikapu.

Kaulukas, sworn, says he knows the 13 kalo patches claimed by Kaihikapu in Kahuku. Only 5 of them are planted at present. Claimant has been prevented from cultivating the others by sickness. The 13 patches are in one piece, bounded on Kaula side and Mauka by the Kula land, - Waialua side by Keino's land, - Makai by Polena's land.

Claimant has no Kula land cultivated. His House site adjoins the kalo patches. It is not enclosed. Claimant has held the land for 18 years.

(Claimant said the 5 patches mentioned in his claim was a mistake of the person who wrote it.)

The Honohiki consented to this claim.

Claim 2882. Makole.

Kaulukas, sworn, says he knows the land claimed by Makole in Kahuku. It consists of 4 kalo patches, one of which has not been planted for 2 years.

The 3 kalo patches are bounded on Kaula side by Mauoli's land, - Mauka by the Honohiki, - Waialua side by Kai's land, - Makai by Nian's land. (Take out the Kolo).

The Kula land claimed is not cultivated. Claimant's House site is makai.

It is not enclosed. Claimant has held the land for 4 years.

(Claimant says he has no land in either Funalau or Oia).

Kaulukas says he heard that one of the above patches had been rented to Clt by the Luna, as it was a Kolo. (Clt acknowledged that he never got permission from the Luna to take this patch, because he would not consent to pay rent.)

The Honohiki consented to all the claim except the lo Kolo.

Claim 2681. Uha.

Kaulukas, sworn, says he knows the land

claimed by Uha in Kahuku. It consists of 8
kalo patches, in one piece, bounded on Hauula
side by Hani's land, - Manka and Makai by
the Konohiki, - on Waialua side by Mauoli's
land.

The kula land claimed has not been cul-
tivated for some time past. The House site
of Claimant is distinct from his land. It is
not enclosed. Claimant derived the land
through his wife, about ten years ago.

The Konohiki consented to this claim.

Claim 2878. Kekua.

Kalakoa, sworn, says he knows the Kalo patch of Kekua in Kawela. It is bounded on Hauula side by Kaunahi's land,- Mauka by Kelemana's land,- on Waialua side by Kula land,- Makai by Kauhahi's land.

The land claimed by Kekua in Kahuku was given up by him to the Honohiki some time ago.

Claimant's House site is in Kawela. It is near the sea side and is not enclosed. Claimant got his land from Kae, some 8 or 10 years ago.

The Honohiki had no objections to this claim.

Claim 2850. Kawi.

Kalakoa, sworn, says he knows the Kalo patch claimed by Kawi in Kawela. It is a Kalo of the Honohiki. Witness knows the House site of claimant in Kawela. It is near the sea side and not enclosed. Claimant has lived there some ten years.

The Honohiki consented to the claim for a House Lot, but claimed the Kalo patch.

Claim 2770. Makaino.

Kalakoa, sworn, says he knows the Kalo patch claimed by Makaino in Kawela. It is bounded on Hauula side by Kae's land,- Mauka by Pauko's land,- Waialua side by Kauhahi's land,- Makai by the Honohiki.

Claimant's House site is near the sea side, and not enclosed. Claimant has had this land about ten years. He got it from Kae.

The Honohiki consented to this claim.

Claim 2724. Paku.

Kalakoā, sworn, says he knows the land claimed by Paku in Kawela. It consists of 3 kalo patches in one piece, bounded on Hauula side by the Kula land, - Mauka by Kookoo's land, - on Waialua side by the Konohiki, - Makai by Kanaula's land. Claimant has no Kula land. His House site is near the sea side and is enclosed with a wooden fence. Claimant has held the land for over ten years.

The Konohiki consented to this claim.

Claim 2784. Moo.

Kalakoā, sworn, says he knows the land claimed by Moo in Kawela. It consists of 2 kalo patches and a House site. The 2 kalo patches are bounded on Hauula side by Kanaula's land, - Mauka by Paku's land, - Waialua side by Kelemana's land, - Makai by Paukoā's land. Claimant has no Kula land in Kawela. His House site is near the kalo land and is not enclosed. He has held the land for about ten years. The land formerly held by Moo in Kahuku has been given back to the Konohiki some time ago.

The Konohiki consented to this claim.

Claim 2836. Kelemana.

Kalakoā, sworn, says he knows the kalo patch claimed by Kelemana in Kawela. It is bounded on Hauula side by Kanaula's land, - Mauka by Paku's land, - Waialua side by the Konohiki, - Makai by Paukoā's land.

Claimant has no Kula land in Kawela.

claimant gave up his lands in Kahuku and
Pahipahialua to the Konoiki some time ago.

Claimant's House site is in Kawala, and is not
enclosed. He has held the patch in Kawala
for about ten years.

The Konoiki consented to this claim.

Claim 2835. Kukeleloa.

Kalako'a, sworn, says he knows the land claimed by Kukeleloa in Kawela and Opaua. It consists of 3 kalo patches in 3 pieces. The first piece of 2 patches is bounded on Hauula side by Hauleakua's land, - on all the other sides by the Kula land.

The second piece of one patch is bounded on Hauula side by Kookoo's land, - Mauka and Makai by the Honohiki, - Waialua side by the Kula land. Claimant has no Kula land.

Claimant's House Lot is in Kawela. It is not enclosed. He has held the land since the time of Kase (10 years). The land belongs properly to Lona the wife of Kukeleloa, who divorced her husband for adultery.

The Honohiki consented to this claim.

Claim 2682. I. (Deceased)

Kalako'a, sworn, says he knows the kalo patch claimed by I, in Kawela. It reverted to the Honohiki recently, on the death of I.

Witness knows the kalo patch claimed by I, in Kahuku. It did not belong to I, but to Kane to whom it returned at the death of I, and in whose claim it is included.

Claim 2873. Kaurahi.

Kalako'a, sworn, says he knows the kalo patch claimed by Kaurahi in Kawela. It is bounded on Hauula side by the Kula land, - Mauka by Paku's land, - Waialua side by Pauko'a's land, - Makai by Kane's land.

Claimant has no Kula land in Kawela.

He has a House site in Kawela. It is not even closed.

Mitrep knows the kalo patch of claimant in Pa-hipahialua. It is bounded on all sides by the Kula land. Claimant has held these lands about ten years.

The Konoiki of Kawela consented to the first part of the claim.

Claim 2875. Kaopuu.

Kalakoia, sworn, says he knows the kalo patch claimed by Kaopuu in Kawela. It has been given up by claimant to the Konoiki's Agent.

Claimant has no Kula land in Kawela.

Kauhaewale, sworn, says he does not know the kalo patch claimed by Kaopuu in Kahuku.

(Claimant appeared in person and stated that he had no claim whatever in Kahuku. It must have been a mistake in making out the claim.)

Claim 2837. Kamakoi.

Kalakoa, sworn, says he knows the 2 Kalo patches claimed by Kamakoi in Kawela. One of them claimant has given to Kaurahi, the other he retains.

This patch is bounded on Hauula side by the Honohiki, - Mauka by Paukoas land, - Waialua side by Telalau's land, - Makai by the Kula land.

Claimant has no Kula land in Kawela. He has no land in Pahipahialua. His House site is in Kawela. It is not enclosed. He got the land from Kaeo some 10 years ago.

The Honohiki consented to this claim.

Claim 2434. Paukoas.

Kalakoa, sworn, says he knows the land claimed by Paukoas in Kawela. It consists of 3 Kalo patches, forming two pieces.

The first piece, of 2 patches, is bounded on Hauula side by Kaula's land, - Mauka by Helimanas land, - Waialua side by the Kula land, - Makai by Makai's land.

The second piece, of one patch, is bounded on Hauula side by Kaula's land, - Mauka by Helimanas land, - Waialua side by the Kula land, - Makai by Makaino's land.

Claimant has no Kula land in Kawela. He has a House site makai of the land. It is not enclosed. He has held the land about ten years.

The Honohiki consented to this claim.

Claim 2897. Kookoo.

Kalako'a, sworn, says he knows the land claimed by Kookoo in Kawela. It consists of 3 Kalo patches and a House site. The 3 Kalo patches form one piece, bounded on Waiau side by the Kula land, Manka and Waialua side by Lono's land; Makai by the Kouohiki.

The kula land claimed has not been cultivated for some time. The House site is near the Kalo patches. It is enclosed with a wooden fence. Claimant has held the land for over ten years.

The Kouohiki had no objections to this claim.

Claim 2838. Kauwahi.

Kalako'a, sworn, says he knows the 2 Kalo patches claimed by Kauwahi in Kawela. They are bounded on Waiau side by Makaimo's land; Manka and Waialua side by the Kouohiki; Makai by Makai's land.

Claimant has no Kula land in Kawela. He has a House site which is not enclosed.

He gave up his Kalo patch in Kahuku to the Kouohiki some time ago. He has no land in Oio. Claimant has held the land in Kawela for about ten years.

The Kouohiki consented to this claim.

Claim 2780. Muli.

Kaiauwenee, sworn, says he knows the 2 kalo patches claimed by Muli in Kawala. They belong to Paukoa (N^o 2734) whose brother gave permission to Muli to plant in them 2 years ago. They have since been restored to Paukoa who now claims them. Paukoa planted the present crop. Muli has a House site in Pahipahialua which is not enclosed. He has no other claim there.

Kalakoa, sworn, says he knows the kalo patch claimed by Muli in Waialea. It belonged to Kaauhau under whom claimant planted. The patch is now mahelohelo.

The Kouohiki of Pahipahialua consented to the claim for a House site.

(Evidence taken at Honolulu)

Kaneiahua, sworn, says he knows the land claimed by Muli in Waialea. It consists of one kalo patch, bounded on Hanula and Warahua sides by the Kouohiki, - Mauka by Aie's land, - Makai by the Stone wall. Claimant got this patch from Kihelohelo in 1846. The sister of Kaauhau had the right to this patch but she has not put in any claim for it. The Kouohiki objects to this claim because he gave the land to Kaauhau and not to Muli.

Kalalawaia, sworn, says the testimony of last witness is correct. Kihelohelo gave the land to Kawaikawa the sister of Kaauhau. She gave the land to Muli who has always gone to the poalima of the Kouohiki.

(G. M. Robertson is instructed to write to Mawala, the Kouohiki, to return the patch to Muli).

Claim 2489. Mooni. (Deceased).

Kaehiwiki, sworn, says Mooni died in 1849, leaving his land to his widow, who held it for a short time and then gave it up to the Konohiki, and went away to some other place to live.

(This was confirmed by others present, and no one appeared to represent this claim).

Claim 2416. Koolae.

Kaekaha, sworn, says he knows the Kalo land of Clt in Kahuku. It consists of 6 patches, only of 2 of which are planted. The other 4 patches have not been planted for several years. The 2 good patches

are bounded on Hanalei side by Kaekaha's land, - Mauka by Malailua's land, - Waialua side by the Konohiki, - Makai by Kaunualii's land.

Claimant's House site is in Oio, near the sea side, not enclosed. He has held the land for a long time. He says he has no Kula land in Oio.

The Konohiki consented to this claim.

Claim 2458. Napoe.

Pranii, sworn, says he knows the land of Napoe in Kahuku. There are 7 Kalo patches, 5 of which are planted. The 7 patches form one piece, bounded on Hanalei side by Kula's land, - Mauka by Kamoku's land, - Waialua side by Luiti's land, - Makai by Uha's land. (Claimant gave up his claim to any Kula land to the Konohiki, in exchange for the 2 maheluhelu Kalo patches).

Claimant's House site is in Kahuku. It is not well enclosed. He derived the land from his ancestors, who held it since the time of Kamehameha. (Claimant says he has no claim in Tunalau or Oio).

The Konohiki consented to this claim.

Claim 2785. Makakiekie.

Pukawale, sworn, says he knows the land of claimant in Kahuku. It consists of 7 kals patches, 3 of which are cultivated. The other 4 have not been planted for two years.

The 3 good patches form two pieces.

The first piece, of 2 patches, is bounded on Naauula side by the House site of claimant, - Mauka by Pukawale's land, - Waialua side by Kekipi's land, - Makai by Keakawale's land.

The second piece, of one patch, is bounded on Naauula side by the Kula land, - Mauka by Pukawale's land, - Waialua side and Makai by the Honohiki.

The Kula land claimed has not been cultivated for some time.

The House site of claimant adjoins his kals patches. It is not enclosed. Claimant has held the land for some sixteen years.

The Honohiki consented to this claim.

Claim 2827. Kanakuna.

Kaukaha, sworn, says he knows the 6 Kalo patches claimed by Kanakuna in Kahuku. They are bounded on Kaunala side by Pahau's land, Mauka by Kaukaha's land, Waialua side by Lono's land, Makai by Kuapuni's land.

Claimant's Kula land is not cultivated - it is nabelehele. His House site is onakai of the land and not enclosed. Claimant has held the Kalo land for over ten years.

The Konohiki consented to the claim for Kalo land and a House site.

Claim 4396. Kais.

Mausli, sworn, says he knows the 6 Kalo patches claimed by Kais in Kahuku. They are bounded on Kaunala side by Makoli's lands, Mauka by Paanui's land, Waialua side and Makai by Niau's land.

Claimant has a piece of Kula land also, planted with bananas, wauke & tobacco. This piece is bounded on all sides by the Konohiki.

Claimant has a House site also. It is not enclosed. He has held the land since the time of Kam. I.

The Konohiki consented to this claim.

Claim 2788. Mausli.

Kais, sworn, says he knows the Kalo land claimed by Mausli in Kahuku. It consists of 5 patches planted. They are bounded on Kaunala side by Kuehi's land, Mauka by Luiki's land, Waialua side by Makoli's land, Makai by Niau's land.

Claimant has also a piece of cultivated

Kula land planted with Tobacco. It is bounded on all sides by the Konohiki's land. Claimant's House site is in the piece of Kula land. The House Lot is not enclosed. Claimant derived this land from his ancestors who held it from the time of Kamehameha I.

The Konohiki consented to this claim.

Claim 2690. Luiki.

Kiha, sworn, says he knows the 8 kalo patches claimed by Luiki in Kahuku. There are 6 of them nakelehele. They have not been planted for nearly a year on account of claimant's sickness. The 8 patches are bounded on Hanuula side by Napi's land, - on all the other sides by a watercourse.

Claimant's House site is distinct from the kalo land and is not enclosed. He derived the land from his ancestors who held from the time of Kam. I. (Claimant says he has no land in Ulupehuehu).

The Kouohiki consented to this claim.

Claim 2880. Kupau. (Deceased)

Kiha, sworn, says he knows the kalo land claimed by Kupau in Kahuku. It consists of 3 patches, bounded on Hanuula side and Maunaka by a watercourse, - Waialua side by Kai's land, - Makai by Kaihupailani's land.

Claimant has a piece of cultivated kula land also. It is planted with wauke, bananas &c. It is bounded on Hanuula side by a path, - on all the other sides by the Kouohiki.

Claimant has no House site. He has no land now in Malaekahana. Kupau has held the land in Kahuku since the time of Kam. I. He died the present year, leaving his land to Luiki who now claims it.

The Kouohiki consented to this claim.

Claim 4422. Kaunualii.

Kaukaha, sworn, says he knows the kalo land

Claim 3809. Lokea. (Deceased)

Kailiuku, sworn, says he knows the Kalo land claimed by Lokea in Kahuku. There are 3 patches planted. They are bounded on Hanuula side by Pahanui's land, Mauka by Kaukaha's land, Waialua side by Hea's land, Makai by Pui's land. The Kalo land claimed by Lokea is maheluhelu. Claimant's House Lot has been abandoned. He held the land for about 12 years. He died the present year leaving his land to Waanui who now claims it.

The Konoitiki consented to this claim.

Claim 2698. Waanui.

Kailiuku, sworn, says he knows the two Kalo patches claimed by Waanui in Kahuku.

They are bounded on Hanuula side by Pahanui's land, Mauka by Kaukaha's land, Waialua side by Hea's land, Makai by Pui's land.

Claimant's House site is in Ulupehupehu. It is not enclosed. He has also a patch of Koni in that land, which is bounded on all sides by the Konoitiki.

Claimant says he has no land now in Oio. He has held the land in Kahuku for over ten years.

The Konoitiki consented to this claim.

Claim 2729. Polena.

Kaluan, sworn, says he knows the Kalo land of Polena in Kahuku. It consists of 13 patches, 7 of which are cultivated, - the other 6

are nakelekele.

The 7 good patches are bounded on Hau-
ula side by Kahikapuu's land, - Mauka by
Kekela's land, - Waialua side by Kaluani's land, -
Makai by Meani's land. The kula land
claimed has not been cultivated for some
years.

Claimant's House site is distinct from his
land, and is not enclosed. He has held
the land for six years.

Claimant has no land in Keana.

The Kōwhiki of Kahuku consented to
this claim.

Claim 3778. Aaiki. (Deceased)

Kaukaha, sworn, says he knows the kalo land of claimant in Kahuku. It consists of 4 patches planted. They are bounded on Hanalei side by Paakui's land, - Mauka by Kipi's land, - Waialua side by Kuu's land, - Makai by Kadikaula's land.

The kula land claimed is nakehehe.

Aaiki died the present year, leaving his land to Kipi who now claims it. Aaiki held the land for a very long time.

The Kouohiki consented to this claim.

Claim 2723. Pua.

Kamokucha, sworn, says he knows the 6 kalo patches claimed by Pua in Kahuku. 2 of them are planted and 4 are nakehehe. Claimant has been sick.

The 6 patches are bounded on Hanalei side by Kiau's land, - Mauka by Kuapuu's land, - on Waialua side by Palakai's land, - Makai by the Kouohiki.

The kula land claimed is not cultivated. The House site of claimant is distinct from his land and is not enclosed.

Claimant has held the land for three years.

The Kouohiki consented to this claim.

Claim 2775. Mabalua.

Pahamui, sworn, says he knows the kalo land of claimant in Kahuku. It consists of three patches, which are bounded on Hanalei side by Heehee's land, - on all the other sides by the Kouohiki.

Claimant has also a piece of kula land.

It is planted with banarras and wauke,
and is bounded on all sides by the Kou-
hiki.

Claimant's House site is distinct from
his land and is not enclosed.

He has held the land for over twenty
years. (Claimant says he has no land
in Punalau.)

The Kouhiki of Kahuku consented to
this claim.

Claim 3813. Pakui.

Kekipi, sworn, says he knows the Kalo land of Pakui in Kahuku. It consists of 8 patches planted bounded on Hanalei side by Kaulaha's land, Mauka by Kaikupailani's land, Waialua side by Kaiti's land, Makai by Kekipi's land.

Claimant has also a piece of Kula land planted with Tobacco, bounded on all sides by the Honohiki.

His House site is distinct from his land and is not enclosed. He has held the land from the time of Kam. II.

The Honohiki consented to this claim.

Claim 2449. Makilo.

Kaukaha, sworn, says he knows the Kalo land of Claimant in Kahuku. It consists of 4 patches planted. They are bounded on Hanalei side by Umiumi's land, Mauka by Kuhoo = pohopohoo's land, Waialua side by Kaunihai = wale's land, Makai by Molowale's land.

Claimant has also a piece of Kula land fenced in. It is bounded on all sides by the Honohiki's land. It is planted with wauke, bananas &c. Claimant has held the land over 3 years.

The Honohiki consented to this claim.

Claim 3951. Niau.

Kais, sworn, says he knows the Kalo land claimed by Niau in Kahuku. It consists of 20 patches, 10 of which are mostly cultivated, and 10 are nakelehele loa.

The ten good patches are bounded on

Hauula side and Makai by the Kouohiki,-
Maui by Kaiō's land,- Waialua side by
Keapuni's land.

The Kula land claimed is not culti-
vated. Claimant's House site is in this
Kula land and is not enclosed. He has
held the land for about 12 years.

The Kouohiki consented to the 10 Kalo
patches and a House site.

Claim 3748. Uha. (Deceased)

Maouli, sworn, says he knows the Kalo land of Uha in Kahuku. It consists of 8 patches, 7 of which are cultivated and 1 nahelohelo. The 7 good patches are bounded on Hanalei side by the Honohiki, - Mauka by Kalaweaimoku's land, - Hailua side and Makai by Pahanui's land.

The Kula land claimed has not been cultivated for some time. Claimant held the Kalo land for about 18 years. He died about 2 years ago, leaving his land to Kiha who now claims it.

The Honohiki consented to this claim.

Claim 2916. Kaluan.

Polena, sworn, says he knows the 5 Kalo patches claimed by Polena in Kahuku. Two of them are planted and 3 are nahelohelo. The whole form one piece, bounded on Hanalei side by Polena's land, - Mauka by Kekela's land, - on Hailua side by the Honohiki, - Makai by Pukawale's land.

The Kula land claimed is not cultivated. Claimant's House site is distinct from the land and not enclosed. He has held the Kalo land for over ten years.

The Honohiki consented to the claim for Kalo land and a House site.

Claim 2928. Kauhauwale.

Maouli, sworn, says he knows the Kalo land claimed by Kauhauwale in Kahuku. It consists of 6 patches, all in cultivation.

They are bounded on Hanuula side by
Makilo's land, - Mauka by Kula's land, -
Wai'alua side by the Honohiki, - Makai
by Kupaieka's land.

The Kula land claimed is nakelekele.
Claimant's House site is distinct from his
land, and is not enclosed. He has held
the Kalo land for about ten years.

The Honohiki consented to the claim
for Kalo land and a House Lot.

Claim #393. Kaemi. (Deceased).

Kauhikawale, sworn, says he knows the 5 kalo patches claimed by Kaemi in Kahuku.

They are bounded on Hauula side by Kaaikaula's land,- Mauka by Umiu's land,- Waialua side by Kupaihea's land,- Makai by the Kouhiki.

The Kula land claimed has not been cultivated for some time.

Claimant held the land for over 4 years.

The Kouhiki consented to the claim for Kalo land.

Claim 2691. Laumea.

Keawe, sworn, says he knows the Kalo land of Laumea in Kahuku. It consists of 5 patches, 3 of which are planted and the other 2 were so recently.

The 5 patches are bounded on Hauula side by Kalaui's land,- Mauka by Mokuokala's land,- Waialua side by Luiki's land,- Makai by Keawe's land.

The Kula land claimed has not been cultivated for some time.

Claimant's House site is distinct from his land, and is not enclosed. He has held the land for over 3 years.

The Kouhiki consented to the claim for Kalo land and a House Lot.

Claim #390. Kupaihea.

Kekipi, sworn, says he knows the 3 Kalo patches claimed by Kupaihea in Kahuku.

The 3 Kalo patches are bounded on the Hauula side by Kaaikaula's land,- Mauka by Kauhikawale's land,- Waialua side by

Hawai's land, - Makai by the Kouohiki.

The kula land claimed has not been cultivated for some time.

Claimant's House site is near his kalo patches and is not enclosed.

He has held the kalo land since the time of Kam. II.

The ~~son~~ Kouohiki consented to this claim.

Claim 2704. Haui.

Kauhikawale, sworn, says he knows the Kalo land of Haui in Kahuku. It consists of 6 patches, all planted. They are bounded on Haui side by Kupaikoa's land.- Mauka by Witupe's land.- Waialua side by Uha's land.- Makai by the Konohiki.

The Kula land claimed has not been cultivated for some time. Claimant has held the land for over 20 years.

The Konohiki consented to the claim for Kalo land.

Claim 3815. Tailalan. (Deceased)

Kalakoa, sworn, says he knows the 3 Kalo patches of Claimant in Kawela. They are bounded on Haui side by Kamakahi's land.- Mauka by Kawahiki's land.- Waialua side and Makai by the Konohiki. Claimant has no Kula land in Kawela.

His House site is near the sea side and is not enclosed. Claimant died about 2 years ago leaving the land to his widow. He got the land from Kaeo some ten years ago.

The Konohiki consented to this claim.

Claim 4384. Kekipi.

Kaukaha, sworn, says he knows the Kalo land of Claimant in Kahuku. It consists of 4 patches, all planted. They are bounded on Haui side by Pakui's land.- Mauka by Kauhupailani's land.- on Waialua side by Umumui's land.- Makai by Moku-okalai's land.

Claimant has also a piece of cultivated Kula land, bounded on all sides by the Konohiki, and planted with Tobacco.

His House site is distinct from his land and is not enclosed. He has held the land for over ten years.

The Konohiki consented to this claim.

Claim 2887. Keawe.

Kaihupailani, sworn, says he knows the 3 Kalo patches claimed by Keawe in Kahuku.

They are bounded on Hanuula side by Lau-meas' land, - Mauka by Witupe's land, - Waialua side by Kawaa's land, - Makai by Kakuani's land.

The Kula land claimed has not been cultivated for some time.

Claimant's House site is distinct from his land and is not enclosed. He has held the land since the time of Kam. I.

(Keawe says he has no claim in Keana).

The Konoehiki consented to the claim for Kalo land and a House Lot.

Claim 3723. Male.

Keawe, sworn, says he knows the Kalo land of Male in Kahuku. It consists of nine patches, all planted. They are bounded on Hanuula side by the Konoehiki, - Mauka by Kalahama's land, - Waialua side by Kika's land, - Makai by Napeo's land.

The Kula land claimed is nakelekele. Claimant's House site is distinct from his land and is not enclosed. He has held the land since the time of Kam. I.

The Konoehiki consented to the claim for Kalo land and a House Lot.

Claim 2931. Keaweikini.

Kauhikawai, sworn, says he knows the 5 kalo patches of claimant in Kahuku. They are bounded on Hanalei side by Kekipi's land, - Mauka and Waialua side by Kawaihewa's land, - Makai by the Kula land.

The Kula land claimed is nakelekele. Claimant's House site is distinct from his land, and is not enclosed. He derived the land from his father who held it from old times.

The Konoiki consented to the claim for Kalo land and a House Lot.

Claim 4449. Kawaihewa.

Kauhikawai, sworn, says he knows the kalo land of claimant in Kahuku. It consists of 6 patches, all planted. They are bounded on Hanalei side by Makaokalani's land, - Mauka by Umiemi's land, - Waialua side by Molewa's land, - Makai by the Kula land.

Claimant has a piece of Kula land also adjoining the Kalo land. His House site is in this piece. There is wauke growing on it. It is bounded on all sides by the land of the Konoiki.

Claimant has a fish pond also near the sea, bounded on all sides by the Konoiki. He has held the land for over 20 years.

The Konoiki consented to this claim.

Claim 2730. Pahanui.

Kaukaha, Sworn, says he knows the 5 Kale patches claimed by Pahanui in Kahuku.

They are bounded on Hanuula side by Makoli's land, - Mauka by Kihai's land, - on Waialua side by Waanui's land, - Makai by Kai's land.

Claimant has also a piece of cultivated kula land, bounded on all sides by the Kouohiki. It may be half an acre, and is planted with bananas and wauke.

Claimant's House site is distinct from his land, and is not enclosed. He has held the land for over ten years.

The Kouohiki consented to this claim.

Claim 2888. Kaupaona. (Deceased.)

Kailiuku, Sworn, deposed that Kaupaona died when the measles prevailed about 2 years ago, leaving no heir that witness knows of. At his death the land reverted to the Kouohiki.

(This statement was confirmed by other persons present, and no one appeared to represent the claim.)

Claim 2679. Umeume.

Pahamui, sworn, says he knows the kalo land of claimant in Kahuku. It consists of 11 patches, all planted. They are bounded on Hanuula side by Kahi's land, - Mauka by the Kouohiki, - Waialua side by Makilo's land, - Makai by Kaikaula's land. Claimant has also a piece of Kulu land, but it is so trifling that he gives it up to the Kouohiki.

Claimant's House Lot is distinct from his land, and is enclosed with a wooden fence. He has no land in either Punalau or Ulupehuhu. He has held his land in Kahuku for over 15 years.

The Kouohiki consented to this claim.

Claim 2932. Kailiuku.

Kiha, sworn, says he knows the kalo land of claimant in Kahuku. It consists of 4 patches, all planted. They are bounded on Hanuula side by the Kouohiki, - Mauka by a road, - Waialua side by Kaunualii's land, - Makai by Paiaala's land.

(Claimant says he has no land in either Oia or Ulupehuhu).

Claimant's House site is in Kahuku. It is makai of the public road. There is no house on it at present, but the Kouohiki consents to his taking this place.

The Kouohiki consented to this claim.

Claim 4388. Kau.

Kaikaula, sworn, says he knows the kalo land of Kau in Kahuku. It consists of 3 patches, all planted. They are bounded on Hauula side by Kaiki's land, - Mauka by Kaihupailani's land, - Waialua side by Umeume's land, - Makai by Kaikaula's land.

Claimant has also a piece of cultivated Kula land, bounded on all sides by the Kouohiki. It may be about a third of an acre.

Claimant's House site is distinct from his land and is not enclosed. He has held the land for over 3 years.

The Kouohiki consented to this claim.

Claim 3412. Moku.

Kiha, sworn, says Moku left this part of the country some 5 months ago and went to live on Hawaii. Witness knows the kalo patch claimed by Moku in Kahuku. It is not planted.

(It was stated by several present that Moku had given up the pieces of land in this claim, and no one appeared to represent him).

The Kouohiki claims this land.

Kahuku 27th Sept^r 1850.

176

Claim 2783.

Maui.

Kailiuku, sworn, says he knows the 6 kalo patches claimed by Maui in Kahuku. None of them are planted. They have not been cultivated for the last year. Maui has been away to Honolulu, and gives that as a reason for not planting the land. The kula land claimed is also uncultivated. Claimant got into trouble for stealing a pig. His house site is in Kahuku, and is not enclosed. He lives most of the time on another land.

The Konehiki objected to any claim for kalo or kula land.

Claim 2906. Kaumakua. (Deceased)

Kailiuku, sworn, says he knows the kalo patch of claimant in Kahuku. It is bounded on Kauula side by Kalaweakumoku's land, - Mauka by Heea's land, - Waiakua side by Malaihua's land, - Makai by Kauhaha's land.

The kula land claimed has not been cultivated for several years.

Kaumakua died in 1848, leaving his land to Kaumualie who has cultivated it since.

The Konehiki consented to this claim.

Claim 2781. Manukeokeo.

Kailiuku, sworn, says he knows the 8 kalo patches claimed by Manukeokeo in Kahuku.

They are bounded on Hauula side by Kanakuna's land, - Mauka by Lono's land, - Waialua side by the Kouhiki, - Makai by Heea's land. The kula land claimed is nakeheke.

Claimant's House site is in Punalau. It is not properly enclosed. He has held the land for about ten years.

The Kouhiki consented to the claim for kalo land and a House Lot.

Claim 2744. Pakanaka.

Kailiuku, sworn, says he knows the kalo patch claimed by Pakanaka in Kahuku.

It is bounded on Hauula side by the Kouhiki, - Mauka and Waialua side by Kainalu's land, - Makai by Makole's land.

The land claimed in Oio has not been cultivated for some time.

Claimant's House Lot is in Oio. It is not enclosed. He has held the patch in Kahuku ten years.

The Kouhiki consented to the claim for one patch and House Lot.

Claim 2787. Makaokalai.

Keawe, sworn, says he knows the kalo land of claimant in Kahuku. It consists of 4 patches bounded on Hauula side by Kaluan's land, - Mauka by Kekela's land, - Waialua side and Makai by Luamea's land.

The fish pond claimed by Makaokalai called Kumuhahave, belongs to Kauluhao.

The other fish pond claimed, witness does not know. (No one present knew this fish pond).

The kula land claimed is mahahele. The House Lot of claimant is distinct from his land. It is not enclosed. He has held the kalo land for about 20 years.

The Konoehiki consented to the claim for kalo land and a House Lot.

Claim 2914. Keakakawai.

Keawe, sworn, says he knows the kalo land of claimant in Kahuku. It consists of 6 patches, 3 of which only are planted, and the others he plants in the rainy season.

They form 2 pieces. The first piece, of 4 patches, is bounded on Hauula side by the Konoehiki, - Mauka by Makakiekie's land, - Waialua side by Kai's land, - Makai by Kauluhao's land.

The second piece, of 2 patches, is bounded on Hauula side by Pukawala's land, - Mauka by Makakiekie's land, - Waialua side by the Konoehiki, - Makai by Kauluhao's land.

The kula land claimed has not been cultivated for some time. Claimant has no House site. He has held the land for about 4 years.

The Konoehiki consented to the claim for kalo land.

Claim 2889. Kekohai. (Deceased)

Kailiuku, sworn, says he knows the land claimed by Kekohai in Kahuku. No part of it has been cultivated for over a year. Kekohai died about 2 years ago. His House Lot has been abandoned since his death, and the cultivation of the land neglected.

The Konohiki claimed the land as his property, and no person presented any counter claim.

Claim 2864. Josua Kaha.

Kailiuku, sworn, says he knows the 2 Kalo patches claimed by Kaha, one in Kahuku and one in Punalau. Neither of them are planted. The one in Kahuku is not nakelekele loa. It is bounded on Hanalei side by Male's land, - Mauka by Kalsi-kini's land, - Waialua side by the Konohiki, - Makai by Heehes' land.

The Kula land claimed is nakelekele. It has not been cultivated for some time.

Claimant's House Lot is in Punalau, and is not enclosed. He has held the patch in Kahuku for ten years.

The Konohiki consented to this claim.

Claim 2934. Kalahana.

Kailiuku, sworn, says he knows the kalo land of Claimant in Kahuku. It consists of two patches, bounded on Hanuula side by the House site of Kailiuku, - Mauka by a road, - Waialua side by the Konohiki, - Makai by Maki's land.

Claimant has no land now in Ois. He has held the kalo patches for 10 or 12 years.

The Konohiki consented to this claim.

Claim 2913. Kekua. (Deceased)

Keha, sworn, says he knows the 2 kalo patches claimed by Kekua. One in Punalau and one in Kahuku. The patch in Punalau is now helehele, but the one in Kahuku is cultivated.

This last is bounded on Hanuula side by Napoe's land, - Mauka and Makai by Luiki's land, - Waialua side by a water-course.

The Kula land claimed has not been cultivated since before Claimant's death.

Claimant's House site is in Kahuku, and is not enclosed. He held the Kalo patch for ten years. Kekua died about 2 years ago, leaving his land to Luiki who now claims it.

The Konohiki consented to this claim.

181
Claim 2935. Kekuawili.

Kailiuku, sworn, says he knows the Kalo land claimed by Kekuawili in Kahuku.

The cultivation of all but one patch has been abandoned. This patch is bounded on Hauula side by Haukaha's land, - Mauka by the Kouohiki, - Waialua side by Kaunualii's land, - Makai by the same.

The cultivation of the Kula land claimed has been given up for some time.

Claimant has no House Lot, he lives with some one else. He has held the Kalo patch for over 3 years.

The Kouohiki consented to this claim.

Claim 2885. Kupihea.

Kailiuku, sworn, says he knows the land claimed by Kupihea. There is one patch in Kahuku and one in Punalau. The patch in Kahuku is bounded on Hauula side by Kalaweaumoku's land, - Mauka by Kika's patch, - Waialua side and Makai by Sheth's land.

The patch in Punalau has not been cultivated for a long time. Claimant has no Kula land, - he had no House Lot, but lived with some friend. He held the Kalo patch in Kahuku several years. He left Kahuku some months ago and gave his land to Kika.

The Kouohiki consented to this claim.

Claim 2869. Kaopupahi.

Kika, sworn, says he knows the Kalo patch claimed by Kaopupahi in Punalau. Its

cultivation has been abandoned. It has the cultivation of the Kula land mentioned in this claim. Claimant resides lately in Honolulu. He has a House site in Punalau. It is not enclosed. He has held this House site for about ten years.

The Honohiki consented to the claim for a House Lot, but claimed the land.

Claim 2909. Kamalama. (Deceased)

Kika, sworn, says he knows the kalo land of Claimant in Punalau. It consists of one patch. Its cultivation has been abandoned, as also that of the kula land mentioned in this claim.

Claimant's House Lot is in Punalau and is not enclosed.

Kailiuku, sworn, says he knows the kalo patch in Kahuku. Its cultivation has been given up for over a year. Kamalama died a few months ago, leaving a widow, Kaleena.

The Honohiki consented to the claim for a House Lot only.

Claim 2771. Maulua.

Kika, sworn, says he knows the 3 kalo patches claimed by Maulua in Punalau. One of them is a Koele and belongs to the Honohiki, and the cultivation of the other has been abandoned. The cultivation of the kula land mentioned has been abandoned.

Claimant has no House Lot - he lives with some one else.

The Honohiki claims all the land mentioned in this Claim.

Claim 2918. Kawaa.

Keawe, sworn, says he knows the kalo patch of Claimant in Kahuku. It is bounded on all sides by Luamea's land.

Claimant's House site is near the sea side and is not enclosed. He has held the kalo patch for about 20 years.

The Honohiki consented to this Claim.

Claim 2738. Palu. (Deceased)

Kiha, sworn, says he knows the kalo land of Palu in Kahuku. It consists of 9 patches, only 2 of which are cultivated. The other 7 are mahelohale. The 2 patches are separate. The first patch is bounded on Hanuula side by Kalaweaunimoku's land, - Mauka by the Honohiki, - Waialua side by Makoli's land, - Makai by Kiha's land.

The second patch is bounded on Hanuula side and Mauka by Kiha's land, - Waialua side by Malailua's land, - Makai by Makoli's land.

The Kula land claimed is not cultivated. Claimant's House site is distinct from the land and is not enclosed. He held the land since the time of Kam. II.

Palu died about 2 years ago, leaving his land to his widow, Sheikei.

The Honohiki consented to the 2 kalo patches and House site.

Claim 2892. Kainalu.

Manukeoke, sworn, says he knows the kalo land of Claimant in Kahuku. It consists of six patches, all planted. They are bounded on Hanuula side and Makai by Manukeoke's land, - Mauka by Kaika's land, - Waialua side by the Honohiki.

The Kula land claimed is not cultivated. Claimant's House Lot is in Punahou and is not enclosed. He has held the land in Kahuku for over-ten years.

The Honohiki consented to the claim for kalo land and a House Lot.

Claim 2778. Mahu.

Kalakoa, sworn, says he knows the kalo patch claimed by Mahu in Kawela.

It is a Kolo and belongs to the Kouohiki.

It was cultivated by Kawi by permission of Mahu who had it under the Kouohiki.

(This was confirmed by others present, and no one appeared to represent the claim).

The Kouohiki claimed this patch as his property.

Claim 4391. Kalawaiamanu.

Kawaa, sworn, says he knows the land of claimant in Keana. It consists of a piece of Kula land, planted with potatoes and Tobacco. It is bounded on Hanula side by a pali, - Mauka by the Kouohiki, - Waialua side by a pali, - Makai by Kukeleloa's land.

Claimant's House Lot is in Keana, and is not enclosed. He has held this land for some 20 years.

The Kouohiki consented to this claim.

Claim 4392. Kuapuki.

Kalawaiananu, sworn, says he knows the land of Kuapuki in Keana. It consists of a piece of cultivated kula land, planted with potatoes. This piece may contain a quarter of an acre, and is bounded on Hauula side by a pali-Mauka and Waialua side by the Kouhiki, Makai by Kalawaiananu's land.

Claimant's House Lot is makai of his land, and is enclosed with a stone wall. He has held the land for over 20 years.

The Kouhiki consented to the claim for the piece of kula and House site.

Claim 2821. Kanciahua.

(See page 200 for this claim).

Claim 2405. Hao.

Kiau, sworn, says he knows the kula patch claimed by Hao in Kahuku. It is bounded on Hauula side and Makai by Kiau's land, Mauka by Palakai's land, Waialua side by Keapuni's land.

Claimant has also a small fish pond in the kula land. It is bounded on all sides by the Kouhiki's land.

Claimant's House Lot is distinct from his land, and is not enclosed. He has held this land since the time of Kam. I.

The Kouhiki consented to this claim.

Claim 2706. Holoaia. (Deceased)
 Kailiuku, sworn, says he knows the Kalo land of Holoaia in Kahuku. It consists of 3 patches, all planted. They are bounded Mankai by Kika's land, - on all the other sides by the Kouohiki.

Claimant's House site is near the sea side, and is not enclosed.

Holoaia held the land for over ten years. He died recently, and his daughter Kalei-kini is his Heir.

The Kouohiki consented to this claim.

Claim 2936. Kauaihikai. (Deceased)
 Kailiuku, sworn, says he knows the Kalo land of Claimant in Kahuku. Only two patches are cultivated. They are bounded Mankai by Heea's land, - on all the other sides by the Kouohiki.

The other patches claimed, have been abandoned. The cultivation of the Kula land has been abandoned.

Claimant's House site is in Oio, and is not enclosed. He held the 2 Kalo patches for five years. He died in 1848, leaving his land to Ufai his Widow, who now claims it.

The Kouohiki consented to this claim.

Claim 2867 Keino.

Rev. J. Kekela, sworn, says he knows the Kalo land of Keino in Kahuku. It consists of 17 patches, 3 of which are uncultivated. Keino himself has cultivated but four patches, as stated in his claim. The other patches that are planted have been cultivated by other people with his consent. Keino claims the Kuleana in the whole.

The 14 patches which are cultivated are in one piece, bounded on Hanuula side by the Kula land, - Mankua by a watercourse, - Waialua side by Luiki's land, - Makai by the Honohiki, - Lua-mea and Kaluan's lands. The Kula land claimed is not cultivated.

Claimant's House site has been abandoned for some time. He lives with some one else. He derived the land from his father who held it from the time of Kam. I.

The Honohiki made no objections to this claim, but leaves it to the Board to decide whether or not the ten new patches can be admitted now.

Claims 2858 } Kahuewaa.
4387 }

Keliuwaiwaiole, sworn, says he knows the two Kalo patches claimed by Kahuewaa in Waialea. They are bounded on Hanuula side by Waice's land, - Mankua by the Honohiki, - Waialua side by Puhiele's land, - Makai by Muli's land.

Claimant has also a piece of cultivated Kula land, planted with potatoes.

It is bounded on Hanuula side and Mankua by a path, - Waialua side by Puhiele's land, -

Maikai by the Honohiki.

He has no fish pond, as stated in his claim.

Kalaipoo sworn, says he knows the old House site of Claimant in Paumotu. Claimant does not reside there now, he lives in Kaurana. He has held his land in Waialeale for over five years.

The Honohiki had no objections to the claim for land in Waialeale.

Kahuku 30 Sept. 1852.

183

Claim 2702. Waioula.

Kaukaha, sworn, says he knows the kula land of Waioula in Kahuku. It is enclosed with a wooden fence, and partially planted with melons &c. Claimant's House site is included in this kula land. This piece is bounded on all sides by the Konohiki's land. Claimant derived this land from his parents.

The Konohiki consented to this claim.

Claim 2991. Haukiale. (Deceased)

Maamala, sworn, says Haukiale died in 1848. At her death the land held by her came back to the Konohiki, who has since placed some one else upon it. (This was confirmed by others present).

Claim 2895. Kaenaokane.

Kaumaliula, sworn, says he knows the 2 kula patches claimed by Kaenaokane in Waialea.

The first patch is bounded on Hauula side by Kaloawahine's land, - Mauka by Kanaua's land, - Waialea side by Kukeleloa's land, - Makai by the Konohiki.

The second patch is bounded on Hauula side by Kukeleloa's land, - Mauka by Laieha's land, - Waialea side by Wahimalo's land, - Makai by Kua's land.

Claimant has no kula land. He has held the 2 patches for over five years.

The Konohiki consented to this claim.

Claim 7640. Hawaii.

Hamala, sworn, says Hawaii died about two years ago. His land fell to his widow who gave it up to the Konoiki. Witness produced a writing signed by her, dated April 25, 1850, in which she gives up her claim, to the Konoiki's Agent.

(Mr. Hopkines, as Land Agent for the King, claimed this land).

Claim 2721. Pahua.

Kalua, sworn, says he knows the Kalo land of claimant in Waialea. It consists of 2 patches.

The first patch is bounded on Hanula side by Keliuwaia's land, - Mauka by Kalua's land, - Waialua side by Kai's land, - Makai by the House site of Opa.

The other patch is bounded on Hanula side by Opa's land, - Mauka by Hawaii's land, - Waialua side by Kalua's land, - Makai by Keliuwaia's land.

Claimant has no House Lot of his own. He lives with a man called Pali. He has held the Kalo patches for about 16 years.

The Konoiki consented to this claim.

Claim 2403. Holi.

Kalua, sworn, says he knows the kalo land of claimant in Waialea. It consists of 3 kalo patches, forming 2 pieces.

The first piece, of 2 patches, is bounded on Hauula side by Kaiō's land, - Mauka by Kalua's land, - Waialea side by the Konohiki, - Makai by claimant's House site.

The second piece is bounded on Hauula side by the Konohiki, - Mauka by the kula land, - on Waialea side by Auaka's land, - Makai by a stone wall.

Claimant has no kula land cultivated.

(Claimant says he has no land in either Pahipahialua or Kaunala).

His House site is in Waialea, and is not enclosed. He has held the kalo patches for 16 years.

Claim 2476. Mahoe.

Aie, sworn, says he knows the 3 kalo patches claimed by Mahoe in Waialea. They are bounded on Hauula side by Auaka's land, - Mauka and Makai by the Konohiki, - Waialea side by Aie's land.

(Claimant says he has no claim in Kawela or any other land except Waialea).

His House site is in Pahipahialua, and is not enclosed. He has held the kalo land for 16 years.

The Konohiki consented to this claim.

Claim 2815. Kauaia 2nd.

Kaumailiula, sworn, says he knows the 2 Kalo patches claimed by Kauaia 2nd in Waialea. They are bounded on Hanuula side by Larekau's land, - Mauka by the Kula land, - Waialea side by Aie's land, - Makai by the Konohiki.

(Claimant says he has no other kuleana). He has held this land for nine years.

The Konohiki consented to this claim.

Claim 2814. Kauaia 1st.

Kauaia 2nd sworn, says he knows the Kalo land of Claimant in Waialea. It consists of 4 patches, bounded on Hanuula side and Mauka by the Kula land, - Waialea side by witneff's land, - Makai by Kukeleloa's land.

Witneff knows the 2 Kalo patches of Claimant in Pahipahialua. They are bounded on Hanuula side by the Konohiki, - Mauka by Kainat's land, - Waialea side by Kahalepua's House site, - Makai by Claimant's House site.

His House site adjoins the last piece, - there is an adobie house (of his) on it, - and it is enclosed by an adobie wall.

Claimant has held the Kalo land for 14 years.

The Konohiki of Waialea consented to this claim.

Claim 2816. Kahaleipeu.

Kalia, sworn, says he knows the kula land of claimant in Waialeale. It consists of 3 kula patches, in two pieces. The first piece, of 2 patches, is bounded on Hanuula side and Mauka by the Kouohiki, - Waialua side by a fish pond, - Makai by a stone wall.

The other patch is bounded on Hanuula side by the kula land, - Mauka and Makai by the Kouohiki, - Waialua side by Opa's land.

Claimant has also a small piece of kula land. It is bounded on Hanuula side by the line of Pahipahialua, - on the other sides by the Kouohiki.

He has also 2 kula patches and a House site in Pahipahialua. The 2 patches are bounded on Hanuula side and Mauka by the Kouohiki, - Waialua side by Kautu's land, - Makai by claimant's House site.

His House site is not fenced in. He has held his land for over 16 years.

The Kouohiki of Waialeale and Pahipahialua consented to this claim.

Claim 2817. Kimo.

Kamauliuila, sworn, says he knows the two kula patches of Kimo in Waialeale. They are bounded on Hanuula side by Namohala's land, - Mauka and Makai by the Kouohiki, - Waialua side by Kahuku's land.

Claimant has no kula land in Waialeale. He has held the kula land for four years.

The Kouohiki consented to this claim.

198

Claim 2820 Kuana (Deceased)

Kamawiliula, sworn, says he knows the half kalo patch claimed by Kuana in Waialeale.

It belongs to Kamohala, in whose claim it is included.

Kuana had no other claim. He died the present year.

(This was confirmed by others, and no person disputed it.)

Claim 2819. Keliihiki.

Keoni, sworn, says he knows the kalo land of claimant in Waialeale. It consists of 3 patches, bounded on Hanuula side by Pookukui's land, - Mauka by the Kula land, - Waialeale side by Kalalawaia's land, - Makai by the Honohiki.

(Claimant says he has no claim in Paumotu).

His House Lot is in Waialeale and is not enclosed. He has held the kalo land for about 16 years.

The Honohiki consented to this claim.

Claim 2722. Puhiele.

Makoe, sworn, says he knows the 4 kalo patches claimed by Puhiele in Waialeale. They are bounded on Kaunala side by Kuashu's land, - Mauka and Makai by the Kouohiki, - Waialeale side by Kamahalo's land.

(Claimant says he has no kula land in cultivation, and no claim in either Pahipahi-alea or Kaunala.)

His House Lot is near the kalo land, and is not enclosed. He has held the kalo land for many years.

The Kouohiki consented to this claim.

Claim 2728. Poonie. (Deceased)

Kamauliuila, sworn, says he knows the 3 kalo patches claimed by Poonie in Waialeale.

They are bounded on Kaunala side by the Kouohiki, - Mauka by Kimoo's land, - Waialeale side by Pahu's land, - Makai by Salolo's House site.

Claimant's House site is in Kaunala, and is not enclosed. He held the land 15 years. Poonie died about 2 years ago, leaving a widow whose name is Kamauiwahine, who now claims the land.

The Kouohiki consented to this claim.

Claim 2881. Kahuku. (Deceased)

Kimo, Sworn, says he knows the 3 kalo patches claimed by Kahuku in Waialeale. They are bounded on Hanalei side by Kimo's land, Mauka by Kaainas land, - Waialeale side by the Kula land, - Makai by the Honohiki.

Claimant has no Kula land cultivated. He has no claim in either Kaunala or Paumotu. His House site is in Waialeale. It is enclosed with a stone fence. He held the land for 15 years. Kahuku died about 2 years ago, leaving his land to Kuwaeapa his child.

The Honohiki consented to this Claim.

Claim 2894. Kaauwaepaa.

Kimo, Sworn, says he knows the land claimed by Kaauwaepaa in Waialeale. It belongs to Pookuku, in whose claim it is included. (This was confirmed by others present, and no person appeared to represent the claim).

Claim 2695. Waihinale.

Kauaia 2nd, Sworn, says he knows the kalo patch of Claimant in Waialeale. It is bounded on Hanalei and Waialeale sides by the Honohiki, - Mauka by a watercourse, - Makai by Claimant's House site.

His House site adjoins this patch and is not enclosed. (Claimant says he has no claim in any other land than Waialeale).

He has held the kalo patch and House site for 16 years.

The Honohiki consented to this Claim.

Claim 2688. Laichau.

Kainoakane, sworn, says he knows the kula land of claimant in Waialea. It consists of 4 patches, in 3 pieces. The first piece, of 2 patches, is bounded on Hanuula side by the kula land, - on all the other sides by Kaunaua's land.

The second piece, of 1 patch, is bounded Makai by Kukeleloa's land, - on all the other sides by Kaunaua's land.

The third piece, of 1 patch, is bounded Makai by Kainoakane's land, - on all the other sides by the kuleana of Kaunaua 2^d.

Laichau has no claim now in Kaunala. He has no House site. He has held the land for 16 years.

The Honohiki consented to this claim.

Claim 2824. Kukeleloa.

Puhiele, sworn, says he knows the kula land of claimant in Waialea. It consists of 4 patches, planted. They are bounded on Hanuula side and Mauka by the Honohiki, - Waialea side by Pooolutu's land, - Makai by the Stone wall.

Claimant has also a piece of kula land in Kaunala, planted with wauke, banana's &c. Bounded on all sides by the Honohiki.

His House site is also in Kaunala, and is distinct from his land. It was formerly enclosed with a Stone wall. Claimant has held the above land for over 15 years.

The Honohiki of Waialea consented to this claim.

Claim 2829. Keoho. (Deceased)

Puhiele, sworn, says he knows the kula land claimed by Keoho in Paumotu. It has not been cultivated for some time. Keoho died in 1849. She was the wife of Kukeleloa, N^o 2824.

Claim 2823. Kamahalo.

Puhiele, sworn, says he knows the 3 kalo patches claimed by Kamahalo in Waialea. They are bounded on Kaunala side by Puhiele's land, Mauka by the kula land, Waialea side by Kaneahuea's land, Makai by the Konohiki. Claimant has no kula land in cultivation. He has held the above kalo land for 4 years.

The Konohiki consented to this claim.

Claim 2842. Kaaina.

Kukeleloa, sworn, says he knows the kalo land of Kaaina in Waialea. It consists of one patch bounded on Kaunala side by Kai's land, Mauka by the Konohiki, Waialea side by the kula land, Makai by Kahuku's land.

Claimant has no kula land in cultivation, nor has he any land in Kaunala.

His House Site is in Waialea, adjoining his kalo patch. It is not enclosed. He derived his kalo patch from his parents, and has held it many years.

The Konohiki consented to this claim.

Claim 2854. Kawi. (Deceased)

Mamaba, sworn, says he knows the Kalo land claimed by Kawi in Waialeale. It belongs to the Konohiki. Kawi died in 1848 leaving his land to his wife, who about a year ago gave up her rights in the land to the Konohiki. No one has worked on the labor days of the Konohiki for this land since the death of Kawi.

W. Hopkins, as Land Agent for the King claimed this land.

Claim 2877. Kukeleloa 2nd

Kukeleloa 1st, sworn, says he knows the land claimed by Kukeleloa 2nd in Waialeale. It belongs to the Konohiki. Claimant only had charge of it temporarily.

Witness knows the Kalo patch of Claimant in Pahipahialua. It is bounded on Hauula side by Aikeu's land, - Manka by Keoni's land, - Waialua side by Malaepe's land, - Makaan by a stone wall.

Claimant has also a piece of Kula land planted with potatoes. It is bounded Makaan by Keakas' land, - on all the other sides by the Konohiki.

His House site is near his Kalo patch, and is not enclosed. He has held this place for about ten years.

The Konohiki made no objections to this claim.

Claim 2707. Hawaii.

Kalua, sworn, says he knows the land claimed by Hawaii. It belonged to Kawau, deceased, whose widow gave up the land to the Kono-hiki last April. Hawaii is no relation to the deceased Kawau, and Kawau did not leave his land to Hawaii.

The Kono-hiki claims this land for the King.

Claim 2672. Kie.

Mahoe, sworn, says he knows the Kalo land of Kie in Waialeale. It consists of 4 patches bounded on Hanuula side by Mahoe's land, on all the other sides by the Kono-hiki.

Claimant has no Kula land in cultivation. His House site is distinct from his Kalo patches, and is enclosed with a stone wall.

Claimant has held his land for 16 years.

The Kono-hiki consented to this claim.

Claim 4286. Kalalauwaia.

Kaunailiula, sworn, says he knows the 2 kalo patches of claimant in Waialeale. One of them was taken away from him by the Kouohiki last year because he did not go to the poalima labor.

The other patch is bounded on Kauula side by Mahoe's land, - Mauka by Mamala's land, - on Waialua side by Witiwiti's land, - Makai by Kanauna's land. (Claimant says he has no land in Kauunala, and the kalo patch claimed by him in Pahipahialua belongs to Nihou - N. 2763.)

Claimant's House Lot is in Waialeale. It is enclosed with a stone wall. He has held the land for 16 years.

The Kouohiki consented to this claim.

(See page 201.)

Claim 2720. Poooukuu.

Kalua, sworn, says he knows the kalo land of claimant in Waialeale. It consists of 3 patches, bounded on Kauula side by Kukeleloa's land, - Mauka by the Kula land, - Waialua side by Mahoe's land, - Makai by the Kouohiki.

(Claimant says he has no claim in either Kauunala or Pahipahialua.)

His House Lot is in Waialeale. It is enclosed by a stone wall. Claimant has held the land for at least 30 years.

The Kouohiki consented to this claim.

Claim 2821. Kanciahua.

Kamaunihula, sworn, says he knows the kalo land of claimant in Waialeale. It consists of 3 patches bounded on Kauula side by Keaka's land, - Mauka by the Kula land, - Waialua side and Makai by the Kouohiki.

(Claimant says he has no land in Pahipahialua.) His House site is in Waialeale. It is

enclosed with a stone wall. He has held the
kalo land for 16 years. He had formerly
six patches, but he gave up 3 of them to the
Honohiki some time ago.

The Honohiki consented to this claim.

(Testimony taken in Honolulu)

Kalalawana, Seoru, says he knows the land
of Claimant in Waialea. He was excused
from going to the Pualima by Keliuawaiole.
The land consisted of 6 kalo patches. They
were not divided by the Tax Officer at the time
it was excused from the Pualima. Mamala,
the Honohiki, took away 3 of the patches, be-
cause Claimant did not go to the Pualima.

(The Board will write to Keliuawaiole
and Kookoe to enquire about their excusing
the Claimant from the Pualima.)

Claim 4266. Kalalawaia. (from page 200.)

Kaneiahua, sworn, says he knows the 2 kalo patches of Claimant in Waialea. They are bounded on Hanuula side by Keliuku's land, - Mauka by the Road, - Waialea side by Kaumailiula's land, - Makai by Kanaua's land & others. Claimant has occupied the land for a long time, - since before the death of Kinau. The Konoiki took away one patch from him because he did not go to the Poalima.

Kie, sworn, says the Tax Officer excused Claimant from going to the labor days of the Konoiki because of his age. Keliwawaiola was the Tax officer who excused him, in 1846.

Claim 2826. Kalaweaumoku.

Pahanui, sworn, says he knows the Kalo land of Claimant in Kahuku. It consists of 9 patches, planted. They are bounded on Hanuula side by Luitiki's land, - Mauka by Kamokueha's land, - Waialea side by Sheike's land, - Makai by Kika's land. Claimant has a piece of cultivated kula land also, planted with wauke &c. It is bounded on Hanuula side by Lauhala trees, - Mauka and Waialea side by the Konoiki, - Makai by Kanahunā's land.

Claimant's House site is distinct from the land, and is not enclosed. He has held the land since his youth. (Claimant says he has no land in either Punalau or Ulupehupehu.)

The Konoiki of Kahuku consented to this claim.

Claim 2891. Kaio.

Holi, sworn, says he knows the kula land of Kaio in Waialeale. It consists of 4 patches, in 2 pieces. The first piece, of 3 patches, is bounded on Kaunala side by Pahua's land, - Mauka by Kalua's land, - Waialua side by Holi's land, - Makai by the same.

The second piece, of one patch, is bounded on Kaunala side by Nahuaka's land, - Mauka by the Kula land, - Waialua side by Kaaina's land, - Makai by Kaauwaipaa's land.

He has no kula land in cultivation.

(Claimant says he has no land now in Pahipahialua)

His House Lot is in Kaunala. It is enclosed with a stone fence. Claimant owns one part of this Lot and Nahuaka owns the other part. He has held the land for 16 years.

The Honohiki of Waialeale consented to this claim.

Claim 2755. Kamohala.

Kimo, sworn, says he knows the 2 Kalo patches of Claimant in Waialea. They are bounded on Hanuula side by Kaumailiia's land, - Mauka by the Kula land, - Waialea side by Kimo's land, - Makai by Waikinala's land. Claimant has no Kula land in cultivation. He has held the Kalo land for 4 years.

The Honohiki consented to this Claim.

Claim 2756. Nahuaka.

Wailua, sworn, says he knows the Kalo land of Claimant in Waialea. It consists of 2 Kalo patches. The first patch is bounded on Hanuula side by Kaiana's land, - Mauka by Kula land, - Waialea side by Kai's land, - Makai by Kahukuu's land. The second patch is bounded on Hanuula side by Koli's land, - Mauka and Waialea side by the Kula land, - Makai by a Stone wall.

(Claimant says he has no land now in either Pahipahualua or Kaunala).

His House site is in Kaunala. It is enclosed with a Stone wall. Claimant has held the Kalo land for about 16 years.

The Honohiki consented to this Claim.

Claim 4458. Kauhupailani.

Keawe, sworn, says he knows the Kalo land of Claimant in Kahukuu. There are five Kalo patches, planted. They are bounded on Hanuula side by Kaluan's land, - Mauka by Keawe's land, - Waialea side by Luiki's land, - Makai by Kai's land. Claimant has no

Kula land cultivated. This House site
is Makai, and is not enclosed. Claimant
has held the land for over ten years.

The Honohiki consented to this claim.

Claim 10,740. Puaiolo.

Makuiua, sworn, (Kale Hoona 10th July 1851) says he knows the land of Blaimant in Heeia, Koolaupoko. It consists of 8 kals patches in one piece, bounded on all sides by the land of the Konohiki. He has also a piece of Kula land, in which is his House site, not enclosed. Claimant derived the land from Kalawoia about ten years ago, and has held it since without dispute.

Whuruku, sworn, says the above testimony is true.

Claim 4,217. Kaula.

27th May 1851.

Kailiili, sworn, says he knows the land claimed by Kaula at Kaneohe. It consists of 2 kals patches in one piece, bounded Mauka by Kapu's land, South by Kaulaheo's land, Makai by Pii-ko's land, North by Kapakakea's land. Also a small kals patch distinct from the above, bounded Makai by the Konohiki, South by Maunualoha's land, Mauka by a stream, North by a Road.

Claimant derived his land from Kaula in the year 1844, and has held it since without dispute.

Also, a fish pond, bounded Makai by the Sea, South and Mauka by the Konohiki, North by land of W. Harbottle.

Also, a piece of Kula land, where his House stands, about half an acre in extent.

(Claimant produced a letter from Kaula, confirming the above statements.)

Claim 6006. Lua.

Kauanui, Kouhiki, sworn, says he knows the land claimed by Lua, in Heeia, Koo-laupoko. The first piece consists of three kalo patches, bounded on Punaluu side by a stream, - Makai and Kaneohe side by the Kouhiki, - Mauka by a watercourse.

The second piece is a House site. It is not enclosed.

Lua derived the land from Kaiakohimai in the time of Kaomi, some twenty years or more ago. No one but Lua has any claim to this land, - his right is undisputed.

Index

Name	No.	Page
Aha	3779	44
Aiohi	6043	131
Aiki	3778	166
Aie	2672	199
Haehae	8184	2
Hikian	8167	8
Hoopalake	8171	9
Hina	8183	12
Hoopii	8164	14
Hooai	8174	29
Hauna	4016	57
Hahia	8172	61
Hio	6081	62
Hookano	4015	75
Hohoa	8185	120
Hooliamanu	6067	121
Haumu	6069	129
Hua	8164 ²	136
Huere	4014	143
Hoolae	2716	161
Hau	2704	170
Hao	2705	185
Holoaia	2706	186
Haukaole	3991	188
Holi	2703	190
Hawaii	2707	199
Keole	3734	44
I.	2682	157
Ihua Kika	2864	179
Haneumi	8337	1
Hakanauaikai	8414	3
Kealoha	8338	4
Hamaka	8418	6
Haia	8277 ² 8444 ³	7
Haailaan	8342	10
Hanealii	8164 ^C	13

45
20

Kaunale	8411	15
Koaniama	8416	16
Keawe	8438	17
Kauihi	8436	19
Kaiwinui	8340	20
Keoho	8437	21
Kane	8356	22
Kanihooi	8582	23
Kahunahana	8341	24
Kaioc	8417 } 8442 }	25
Kamosiili	8313	26
Koeko S. J.	8591 } 8415 }	28
Kaha	5813	32
Kuikaumiuni	4364	35
Kahiakua	5850	36
Kumama	6952	37
Kaniho	6951	38
Kaumualii	4358	39
Kukeawe	6962	40
Kaiialilii	6956	41
Kaipua	5851	45
Keohoena	5884	47
Kaiava	6953	48
Kiamapu	5808	49
Kaikurana	4356	50
Kahau	4400	51
Kalakoa	4445	52
Kaahui	4362	53
Kaiwinui	4423	54
Kahalaaku	4694	55
Kahopukahi	4371	57
Kuolulu	4365	58
Kuheleloa	8435	63
Kaukaa	4430	65
Keopohaku	4435	67
Kekaula	7433	68
Kaui	8410	"
Kaiwa	5812	69
Kuelike	4379	70

Kenas	4349	72
Ku'aiwa	4347	73
Kaluhia'i	4372	74
Kealohi	4357	75
Kekipi	4370	76
Kalolohe	4436	77
Keloha	4375	78
Koo	4352	79
Hawai	4353	80
Kauli	10912	81
Kachukukona	6950	82
Kanehue	4447	84
Kukae	6958	85
Kuhomanana	8164 D.	86
Kamalii	8164 E.	87
Kaao	5809	89
Kakaa	6954	90
Kauoalani	4350	91
Kaiwi	4437	92
Kaumoana	6955	93
Kalakee	5852	95
Kamohoula	7652	97
Kahawaii	7667	99
Kuapuu	7685	100
Kamano	5853	101
Kupau	8447	103
Kamaala	8164 F.	107
Kaiwe	8164 G.	108
Kaukalin	8164 H.	111
Kalima	8164 L.	112
Kolikoli	8164 M.	113
Kalimaoni	7653	115
Kekuu	4367	116
Kukuikohakola	5702	117
Kapena	5231	118
Kuapuu	4433	119
Kaopae	4363	120
Kaopuu	5319	123
Kamakalaahia	5321	"

<i>Haiakahi</i>	5221	124
<i>Hauaiua</i>	5709	125
<i>Hapapa</i>	5220	"
<i>Hamakuku</i>	5318	127
<i>Huamoo</i>	5706	128
<i>Haiwahia</i>	5807	130
<i>Heakua</i>	8164 0	134
<i>Halaauhina</i>	7651	135
<i>Huao</i>	5704	137
<i>Hapua</i>	5708	"
<i>Huheana</i>	8583	140
<i>Haihua</i>	4355	141
<i>Halaauiki</i>	8343	142
<i>Hikau</i>	8592	144
<i>Hauuu</i>	2056	"
<i>Haapa</i>	4057	145
<i>Kalahoo</i>	4351	146
<i>Hane</i>	4424	147
<i>Huapuu</i>	4374	148
<i>Hahawaii</i>	8537	149
<i>Hakau</i>	8355	150
<i>Hai</i>	2870	151
<i>Huhoopohopoho</i>	4428	152
<i>Hai</i>	2890	"
<i>Hula</i>	4383	"
<i>Kapaiaala</i>	2868	153
<i>Hahoe</i>	2861	"
<i>Haihikapu</i>	2872	154
<i>Hekua</i>	2878	155
<i>Hawi</i>	2850	"
<i>Helemana</i>	2836	156
<i>Huheleloa</i>	2835	157
<i>Hauahi</i>	2873	"
<i>Haopuu</i>	2875	"
<i>Hamakai</i>	2837	158
<i>Hokoo</i>	2897	159
<i>Hauwahi</i>	2838	"
<i>Hanahuna</i>	2827	163
<i>Hao</i>	4396	"

Hupau	2880	164
Haunualii	4422	"
Haluau	2916	168
Kauikauwale	2928	"
Haumi	4393	169
Hupaihea	4390	"
Kekipi	4384	170
Keawe	2887	171
Keaweikini	2931	172
Kaaikaula	4449	"
Kaupoona	2888	173
Kailiuku	2932	174
Kau	4388	175
Kaunakua	2906	176
Keakasawai	2914	178
Kekohai	2889	179
Kiha Iosua	2864	"
Kalahana	2934	180
Kekua	2913	"
Kekuani	2935	181
Kupihua	2885	"
Kaopuahi	2869	"
Kamalama	2909	182
Kawaa	2918	"
Kainalu	2892	183
Kalawaiamanu	4391	184
Kuapuhi	4392	185
Kaneiahua	2821	"
Kauaihikai	2926	186
Keino	2867	187
Kakuewa	2858 ² 4387 ³	"
Kaenakane	2895	188
Kawau	7640	189
Kaunua 1 st	2814	191
Kaunua 2 nd	2815	"
Kahaleipu	2816	192
Kimo	2817	"
Kuaua	2820	193

<i>Helikui</i>	2819	193
<i>Kahuku</i>	2831	195
<i>Kaauwaepaa</i>	2894	"
<i>Kuheloa</i>	2824	196
<i>Keoho</i>	2829	197
<i>Kamahala</i>	2823	"
<i>Kaaina</i>	2842	"
<i>Kawi</i>	2854	198
<i>Kuheloa 2nd</i>	2877	"
<i>Kalalawaia</i>	4266	200
<i>Kaneidhuc</i>	2821	"
<i>Kalaweaimoku</i>	2826	201
<i>Kais</i>	2897	202
<i>Kaihupailani</i>	4458	203
<i>Kaula</i>	4217	204
<i>Lima</i>	9962	50
<i>Liki</i>	3810	53
<i>Luhiluhi</i>	8164 H.	109
<i>Lilipi</i>	9961	120
<i>Lutiki</i>	2690	164
<i>Lokea</i>	3809	165
<i>Laumea</i>	2691	169
<i>Laichau</i>	2688	196
<i>Lua</i>	6006	205
<i>Mahoe</i>	10241	11
<i>Makalohi</i>	10261	18
<i>Mokulama</i>	3700	31
<i>Maiake</i>	3724	33
<i>Mikikolo</i>	3716	42
<i>Manuela</i>	3719	46
<i>Manuela</i>	10209	"
<i>Molea</i>	10212	56
<i>Maliko</i>	10226	59
<i>Manete</i>	3717	79
<i>Makaia</i>	10185	104
<i>Moa</i>	4707	105
<i>Maunui</i>	5976	138
<i>Moke</i>	2001	142
<i>Makaino</i>	3720	146

Makole	2782	154
Makaino	2770	155
Moo	2784	156
Muli	2780	160
Mooni	2789	161
Makakiekie	2785	162
Mauoli	2788	163
Malaelua	2745	166
Makilo	2779	167
Male	3723	171
Moku	3712	175
Mau	2783	176
Manukekes	2781	177
Makakalai	2787	178
Maulua	2771	182
Mahu	2778	184
Mahoe	2776	190
Kalehu	5357 C.	30
Nakolo	3959	43
Nawaa	3957	53
Nailieha	8146 E.	88
Nihi	3948	114
Nunu	3946	122
Napela	6122	126
Nahoa	6125	133
Nakuina	10804	141
Nakapalau	3944	143
Kaulukao	3958	158
Napoe	2758	161
Niau	3951	167
Namohala	2755	203
Nahuaka	2756	4
Oopa	6046	64
Opunui	3980	71
Shekan	10555	129
Toopuu	10276	5
Pahakae	3881	34

Paele	3879	43
Puahi	5948	60
Poomahoe	5897	66
Paia	3874	72
Peahi	10715	83
Polani	10771	94
Puali	5925	96
Puuwaawaa	3878	102
Paoao	10878	106
Peters	8164 J.	110
Paleia	5339	127
Puunee	8164 H.	132
Pine	5941	133
Puaa	10780	139
Pohule	3876	145
Paele	10820	147
Puu	3870	149
Paukoa	7727	150
Pukawale	2732	151
Paku	2724	156
Paukoa	2734	158
Polena	2729	165
Puu	2723	166
Paku	3813	167
Pailakau	3815	170
Pahanui	2730	173
Pakanaka	2744	177
Palu	2738	183
Pahua	2721	189
Puhiele	2722	194
Ponui	2728	"
Poolukuu	2720	200
Puiole	10740	204
Toinui	7102	66
Uli	10912	81
Ukeke	3752	98
Ula	5413	131
Uha	3748	168
Umeume	2679	174
Uha	2681	154
Waianaia	10972 10975	27

<i>Wahineomua</i>	3746	34
<i>Wahoa</i>	10978	135
<i>Waanui</i>	2698	165
<i>Wasaia</i>	2702	188
<i>Wahimalo</i>	2695	195