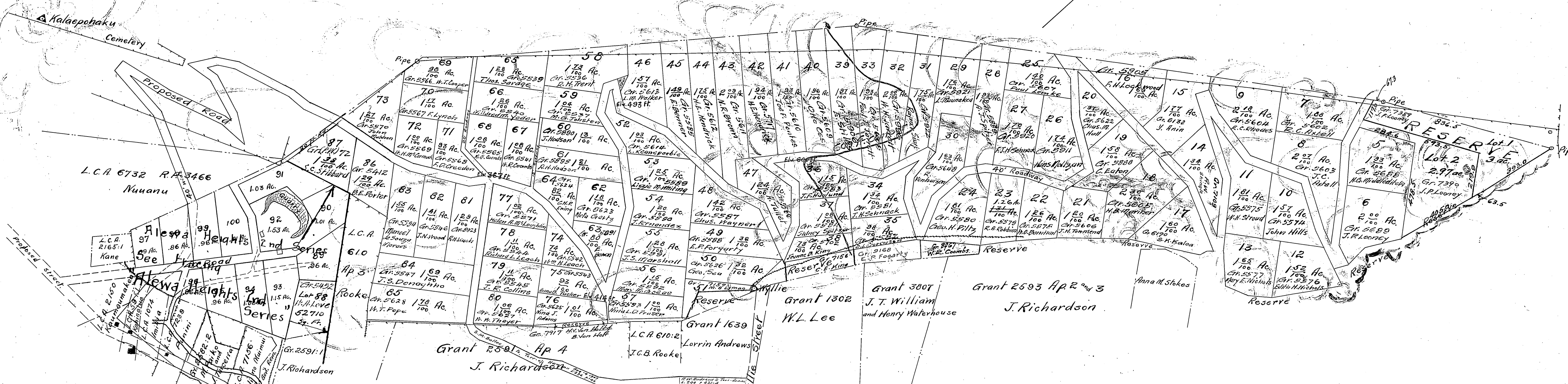


K A P A L A M A

True North



NUUANU VALLEY

HAWAII TERRITORY SURVEY  
Walter E. Wall Surveyor.

# ALEWA HEIGHTS LOTS

HONOLULU OAHU

Surveyed by O.L. Sorenson.  
Scale 1 Inch = 300 Feet  
November 1905.  
Reduction and tracing by H.E. Newton.

Rm 2321

G. Podmore Del.  
Dec. 1908.