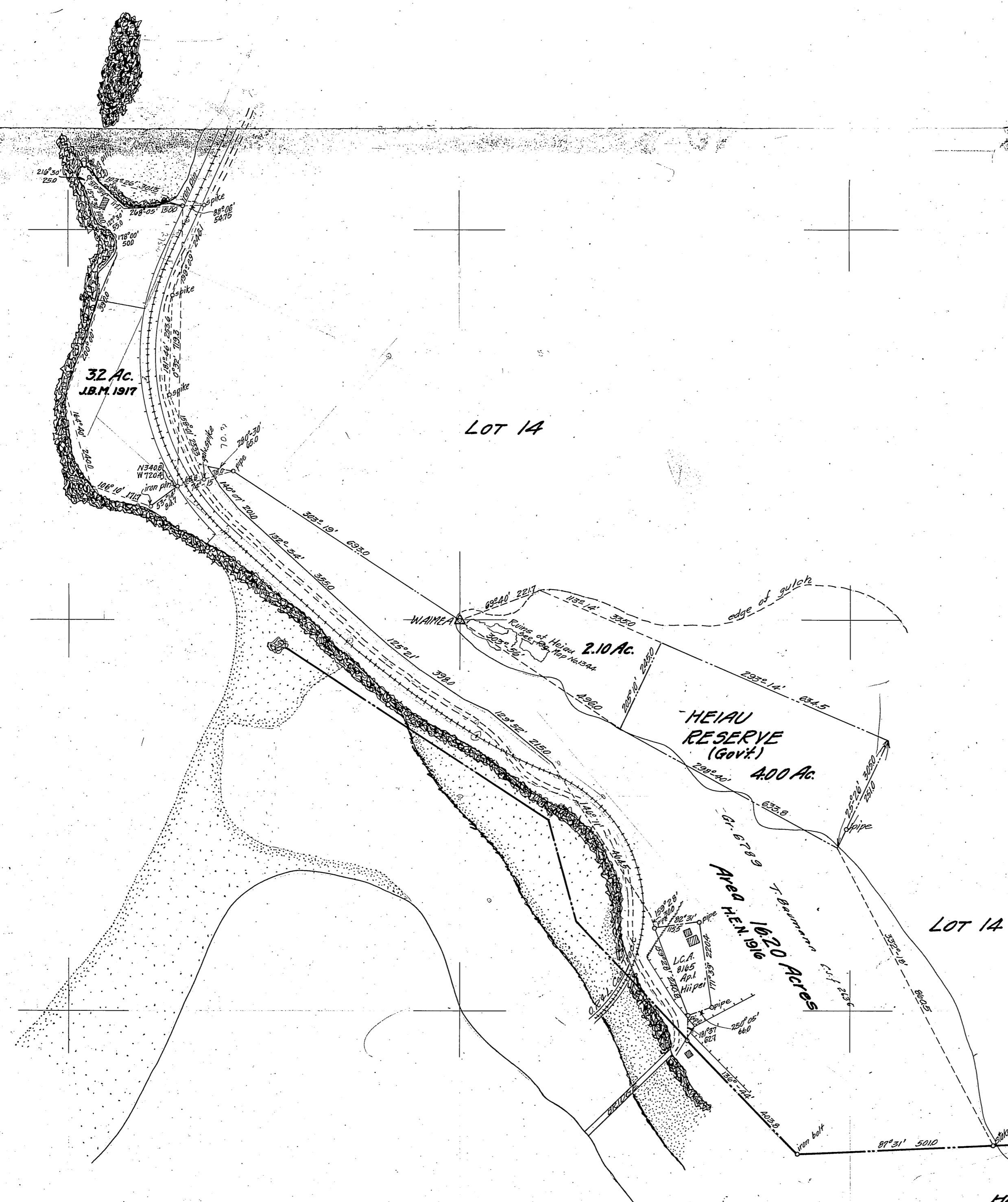


Zone: 5-3-04, 05

both Co's track plotted in relation to h.c. 1
This corner lot 1 plotted by corner
R.R. & h.c.'s track plotted from same notes up from Pupukeya remains in survey
JPM
3/15/17



HAWAII TERRITORY SURVEY
 WALTER E. WALL, SURVEYOR
 GOVERNMENT REMNANTS
 PUPUKEYA, KOOLAULOA, OAHU
 Scale - 1 in. = 200 feet
 Surveys by H.E. Newton, Sept. 1916 and Jas. B. Mann, Aug. 1917
 F.B. 933 p.p. 59-64
 REG. NO. 2593
 DRAWER 27 37

Reg. 2593
 Dr. 37-100